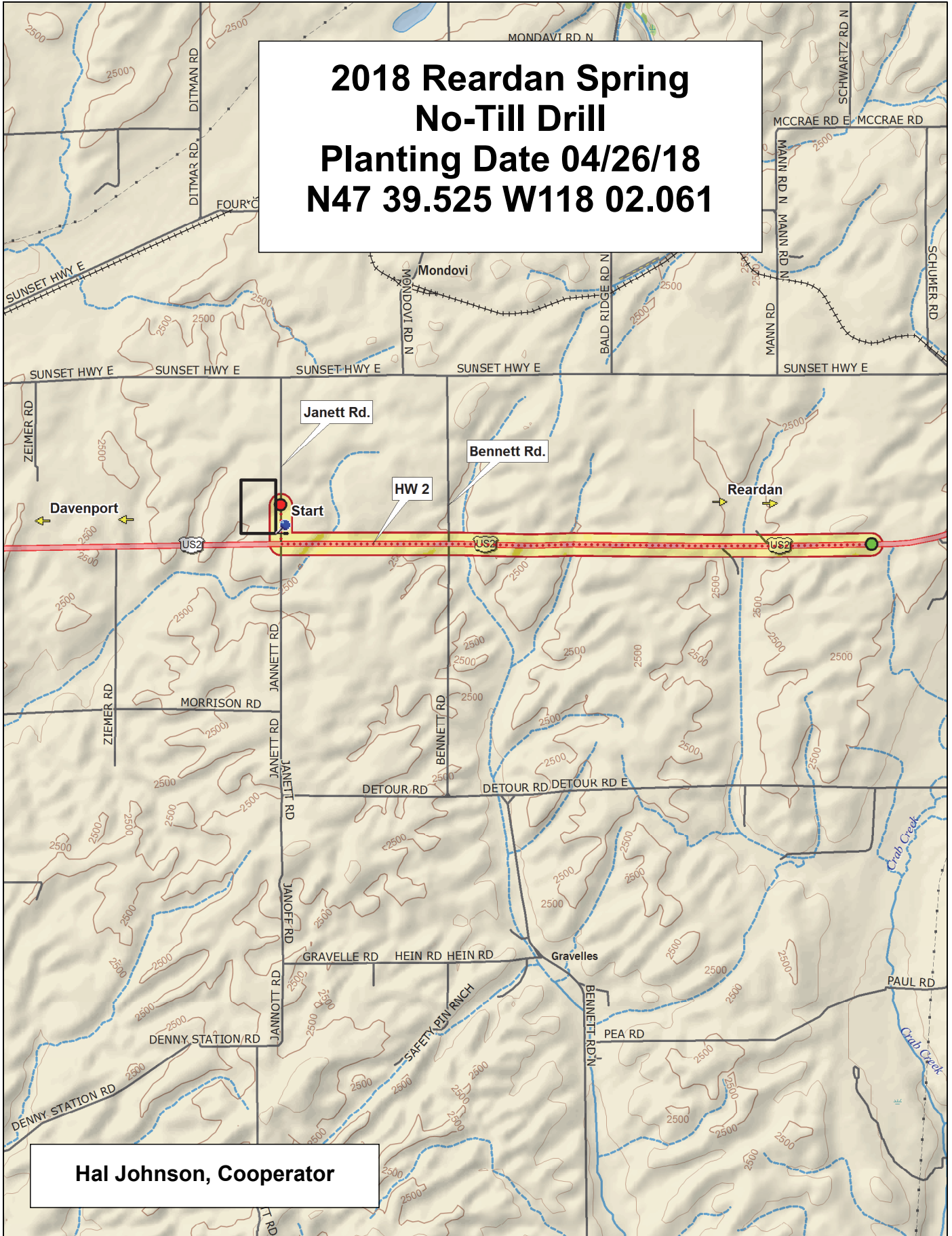
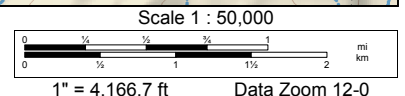


**2018 Reardan Spring
No-Till Drill
Planting Date 04/26/18
N47 39.525 W118 02.061**



Hal Johnson, Cooperator



2018 Soft White Spring Trial, Reardan

Border	9	Seahawk	Babe	WA 8298 CL+	WA 8295 CL+	WA 8266 CL+	Louise	WA 8277	08PN2001-07	Border
	8	Diva	WA 8296 CL+	Melba	JD	IDO1403S	WB-1035CL+	Tekoa	14-SW-1059	
	7	14-FAC-2043	Whit	11PN2532-507	SY Saltese	Ryan	WA 8297 CL+	WB6121	WB6341	
	6	Seahawk	Ryan	Tekoa	WA 8266 CL+	WA 8297 CL+	JD	IDO1403S	Whit	
	5	Melba	14-SW-1059	Babe	WB6341	08PN2001-07	SY Saltese	WA 8298 CL+	WA 8296 CL+	
	4	WB6121	Louise	14-FAC-2043	WA 8295 CL+	WA 8277	11PN2532-507	Diva	WB-1035CL+	
	3	Tekoa	Louise	Babe	JD	WA 8297 CL+	Melba	11PN2532-507	Seahawk	
	2	WB6341	WB-1035CL+	Whit	08PN2001-07	Ryan	Diva	14-FAC-2043	WA 8298 CL+	
	1	14-SW-1059	WB6121	WA 8266 CL+	SY Saltese	WA 8277	IDO1403S	WA 8295 CL+	WA 8296 CL+	
	1	2	3	4	5	6	7	8		

Entry	Name
1	14-FAC-2043
2	14-SW-1059
3	08PN2001-07
4	11PN2532-507
5	SY Saltese
6	IDO1403S
7	WB-1035CL+
8	WB6121
9	WB6341
10	Babe
11	Diva
12	JD
13	Louise
14	Melba
15	Ryan
16	Seahawk
17	Tekoa
18	WA 8266 CL+
19	WA 8277
20	WA 8295 CL+
21	WA 8296 CL+
22	WA 8297 CL+
23	WA 8298 CL+
24	Whit

3 Replications, Alpha-Lattice Design

<http://variety.wsu.edu>

Common	Planting Date
Club	26-Apr

B	2018 SW Spring	B	2018 HR Spring	B	2018 Barley	B	2018 S. Rate	B
	1 8		1 12		1 8		1 2	



2018 Barley Trial, Reardan

9	Border	12WA-120.23	11WA-107.43	LCS Genie	13WA-101.2	Lenetah	Claymore	Muir	13WA-149.2	Border
8		LCS Opera	Meg's Song (X05013-T1)	11WA-107.58	Lyon	CDC Copeland	Altorado	Champion	LCS Sienna	
7		BZ512-319	Havener	Oreana	LCS Vespa	11WA-107.36	Survivor (07MWA-203)	LCS Odyssey	12WA-120.14	
6		Claymore	Survivor (07MWA-203)	BZ512-319	Champion	LCS Genie	11WA-107.36	LCS Opera	Altorado	
5		13WA-101.2	LCS Sienna	Lyon	12WA-120.14	11WA-107.58	11WA-107.43	LCS Vespa	13WA-149.2	
4		LCS Odyssey	Oreana	Lenetah	CDC Copeland	12WA-120.23	Muir	Meg's Song (X05013-T1)	Havener	
3		12WA-120.23	11WA-107.36	LCS Vespa	Champion	Lenetah	Meg's Song (X05013-T1)	Survivor (07MWA-203)	13WA-101.2	
2		11WA-107.43	LCS Opera	BZ512-319	CDC Copeland	Lyon	13WA-149.2	Oreana	Altorado	
1		Claymore	12WA-120.14	Havener	LCS Genie	Muir	LCS Sienna	LCS Odyssey	11WA-107.58	
		1	2	3	4	5	6	7	8	

Entry	Name
1	Altorado
2	BZ512-319
3	Champion
4	Claymore
5	Oreana
6	LCS Vespa
7	Lenetah
8	Lyon
9	Muir
10	Survivor (07MWA-203)
11	Havener
12	Meg's Song (X05013-T1)
13	CDC Copeland
14	LCS Genie
15	LCS Odyssey
16	LCS Opera
17	LCS Sienna
18	11WA-107.36
19	11WA-107.43
20	11WA-107.58
21	12WA-120.14
22	12WA-120.23
23	13WA-101.2
24	13WA-149.2

3 Replications, Alpha-Lattice Design

<http://variety.wsu.edu>

Covered	Planting Date
Hulless	26-Apr

	2018 SW Spring		2018 HR Spring		2018 Barley		2018 S. Rate	
B	1 8	B	1 12	B	1 8	B	1 2	B



2018 Seeding Rate Trial, Reardan

9	8	7	6	5	4	3	2	1	Border	15_ft2	20_ft2	Border
									Glee	Glee		
									15_ft2	25_ft2		
									Ryan	Ryan		
									20_ft2	25_ft2		
									Ryan	Glee		
									25_ft2	20_ft2		
									Glee	Ryan		
									15_ft2	25_ft2		
									Ryan	Ryan		
20_ft2	15_ft2											
Glee	Glee											
25_ft2	15_ft2											
Ryan	Ryan											
20_ft2	25_ft2											
Glee	Glee											
15_ft2	20_ft2											
Glee	Ryan											
	1	2										

Entry	Name	
1	Glee	15_ft2
2	Glee	20_ft2
3	Glee	25_ft2
4	Ryan	15_ft2
5	Ryan	20_ft2
6	Ryan	25_ft2

3 Replications, Alpha-Lattice Design

<http://variety.wsu.edu>

Planting Date
26-Apr

B	2018 SW Spring	B	2018 HR Spring	B	2018 Barley	B	2018 S. Rate	B
	1 8		1 12		1 8		1 2	

