

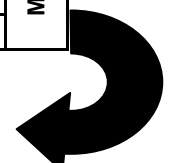
2007-2008 Almira, Dayton, Lamont, Pullman, Reardan, Walla Walla

Soft White Variety Trial

MADSEN BORDER	12	23	15	29	48	26	19	39	16	34	36	6	49	9	14	7	38	42	20	46	31	32	24	33	4	MADSEN BORDER
	5	50	25	10	21	41	17	45	8	44	13	37	22	1	3	47	18	2	43	35	11	30	28	27	40	
	24	15	42	3	6	29	22	4	38	35	50	23	13	5	37	47	43	20	49	41	12	48	2	32	40	
	7	9	31	25	18	14	8	39	10	33	21	45	27	26	36	16	30	46	34	1	17	28	11	44	19	
	13	28	5	2	38	22	42	25	14	21	4	17	37	3	46	27	50	26	35	12	10	1	11	23	48	
	40	19	33	43	8	36	24	9	44	49	16	30	45	31	18	15	7	41	20	34	39	29	6	47	32	
	50	49	48	47	46	45	44	43	42	41	40	39	38	37	36	35	34	33	32	31	30	29	28	27	26	
	1	2	3	4	5	6	7	8	9	10	11	12	13	14	15	16	17	18	19	20	21	22	23	24	25	

Hard Variety Trial

23	11	15	25	14	30	8	26	28	20	18	12	1	22	7	MADSEN BORDER
9	19	17	5	13	24	3	16	10	2	29	21	4	27	6	
19	10	4	5	11	23	7	16	26	13	24	21	25	22	30	
29	14	9	6	1	17	20	18	12	27	2	28	3	15	8	
24	6	14	22	1	8	5	28	10	13	19	4	23	26	2	
11	17	20	21	12	25	15	27	9	18	29	3	7	16	30	
30	29	28	27	26	25	24	23	22	21	20	19	18	17	16	
1	2	3	4	5	6	7	8	9	10	11	12	13	14	15	



2007-2008 WSU Winter Wheat Varietal Trial

Madsen Border											
1	50	40	13	7	24	5	12	23	15	29	48
2	49	19	28	9	15	50	25	10	21	41	26
3	48	33	5	31	42	25	10	21	41	17	45
4	47	43	2	25	3	29	22	4	38	35	50
5	46	33	38	18	6	29	22	4	38	35	50
6	45	43	22	14	29	22	4	38	35	50	23
7	44	24	42	8	22	4	39	10	33	21	45
8	43	9	25	39	4	39	10	33	21	45	27
9	42	44	25	9	4	39	10	33	21	45	27
10	41	49	14	49	4	39	10	33	21	45	27
11	40	16	40	16	30	45	31	18	15	7	41
12	39	38	37	37	3	46	27	50	26	35	12
13	38	37	36	3	46	27	50	26	35	12	10
14	37	36	35	4	47	18	2	43	35	11	30
15	36	35	34	7	47	18	2	43	35	11	30
16	35	34	33	7	47	18	2	43	35	11	30
17	34	33	32	7	47	18	2	43	35	11	30
18	33	32	31	7	47	18	2	43	35	11	30
19	32	31	30	7	47	18	2	43	35	11	30
20	31	30	29	7	47	18	2	43	35	11	30
21	30	29	28	7	47	18	2	43	35	11	30
22	29	28	27	7	47	18	2	43	35	11	30
23	28	27	26	7	47	18	2	43	35	11	30
24	27	26	25	7	47	18	2	43	35	11	30
25	26	25	24	7	47	18	2	43	35	11	30
26	25	24	23	7	47	18	2	43	35	11	30
27	24	23	22	7	47	18	2	43	35	11	30
28	23	22	21	7	47	18	2	43	35	11	30
29	22	21	20	7	47	18	2	43	35	11	30
30	21	20	19	7	47	18	2	43	35	11	30
31	20	19	18	7	47	18	2	43	35	11	30
32	19	18	17	7	47	18	2	43	35	11	30
33	18	17	16	7	47	18	2	43	35	11	30
34	17	16	15	7	47	18	2	43	35	11	30
35	16	15	14	7	47	18	2	43	35	11	30
36	15	14	13	7	47	18	2	43	35	11	30
37	14	13	12	7	47	18	2	43	35	11	30
38	13	12	11	7	47	18	2	43	35	11	30
39	12	11	10	7	47	18	2	43	35	11	30
40	11	10	9	7	47	18	2	43	35	11	30
41	10	9	8	7	47	18	2	43	35	11	30
42	9	8	7	7	47	18	2	43	35	11	30
43	8	7	6	7	47	18	2	43	35	11	30
44	7	6	5	7	47	18	2	43	35	11	30
45	6	5	4	7	47	18	2	43	35	11	30
46	5	4	3	7	47	18	2	43	35	11	30
47	4	3	2	7	47	18	2	43	35	11	30
48	3	2	1	7	47	18	2	43	35	11	30
49	2	1	0	7	47	18	2	43	35	11	30
50	1	0	0	7	47	18	2	43	35	11	30
51	0	0	0	7	47	18	2	43	35	11	30
52	0	0	0	7	47	18	2	43	35	11	30
53	0	0	0	7	47	18	2	43	35	11	30
54	0	0	0	7	47	18	2	43	35	11	30
55	0	0	0	7	47	18	2	43	35	11	30
56	0	0	0	7	47	18	2	43	35	11	30
57	0	0	0	7	47	18	2	43	35	11	30
58	0	0	0	7	47	18	2	43	35	11	30
59	0	0	0	7	47	18	2	43	35	11	30
60	0	0	0	7	47	18	2	43	35	11	30
61	0	0	0	7	47	18	2	43	35	11	30
62	0	0	0	7	47	18	2	43	35	11	30
63	0	0	0	7	47	18	2	43	35	11	30
64	0	0	0	7	47	18	2	43	35	11	30
65	0	0	0	7	47	18	2	43	35	11	30
66	0	0	0	7	47	18	2	43	35	11	30
67	0	0	0	7	47	18	2	43	35	11	30
68	0	0	0	7	47	18	2	43	35	11	30
69	0	0	0	7	47	18	2	43	35	11	30
70	0	0	0	7	47	18	2	43	35	11	30
71	0	0	0	7	47	18	2	43	35	11	30
72	0	0	0	7	47	18	2	43	35	11	30
73	0	0	0	7	47	18	2	43	35	11	30
74	0	0	0	7	47	18	2	43	35	11	30
75	0	0	0	7	47	18	2	43	35	11	30
76	0	0	0	7	47	18	2	43	35	11	30
77	0	0	0	7	47	18	2	43	35	11	30
78	0	0	0	7	47	18	2	43	35	11	30
79	0	0	0	7	47	18	2	43	35	11	30
80	0	0	0	7	47	18	2	43	35	11	30
81	0	0	0	7	47	18	2	43	35	11	30
82	0	0	0	7	47	18	2	43	35	11	30
83	0	0	0	7	47	18	2	43	35	11	30
84	0	0	0	7	47	18	2	43	35	11	30
85	0	0	0	7	47	18	2	43	35	11	30
86	0	0	0	7	47	18	2	43	35	11	30
87	0	0	0	7	47	18	2	43	35	11	30
88	0	0	0	7	47	18	2	43	35	11	30
89	0	0	0	7	47	18	2	43	35	11	30
90	0	0	0	7	47	18	2	43	35	11	30
91	0	0	0	7	47	18	2	43	35	11	30
92	0	0	0	7	47	18	2	43	35	11	30
93	0	0	0	7	47	18	2	43	35	11	30
94	0	0	0	7	47	18	2	43	35	11	30
95	0	0	0	7	47	18	2	43	35	11	30
96	0	0	0	7	47	18	2	43	35	11	30
97	0	0	0	7	47	18	2	43	35	11	30
98	0	0	0	7	47	18	2	43	35	11	30
99	0	0	0	7	47	18	2	43	35	11	30
100	0	0	0	7	47	18	2	43	35	11	30
101	0	0	0	7	47	18	2	43	35	11	30
102	0	0	0	7	47	18	2	43	35	11	30
103	0	0	0	7	47	18	2	43	35	11	30
104	0	0	0	7	47	18	2	43	35	11	30
105	0	0	0	7	47	18	2	43	35	11	30
106	0	0	0	7	47	18	2	43	35	11	30
107	0	0	0	7	47	18	2	43	35	11	30
108	0	0	0	7	47	18	2	43	35	11	30
109	0	0	0	7	47	18	2	43	35	11	30
110	0	0	0	7	47	18	2	43	35	11	30
111	0	0	0	7	47	18	2	43	35	11	30
112	0	0	0	7	47	18	2	43	35	11	30
113	0	0	0	7	47	18	2	43	35	11	30
114	0	0	0	7	47	18	2	43	35	11	30
115	0	0	0	7	47	18	2	43	35	11	30
116	0	0	0	7	47	18	2	43	35	11	30
117	0	0	0	7	47	18	2	43	35	11	30
118	0	0	0	7	47	18	2	43	35	11	30
119	0	0	0	7	47	18	2	43	35	11	30
120	0	0	0	7	47	18	2	43	35	11	30
121	0	0	0	7	47	18	2	43	35	11	30
122	0	0	0	7	47	18	2	43	35	11	30
123	0	0	0	7	47	18	2	43	35	11	30
124	0	0	0	7	47	18	2	43	35	11	30
125	0	0	0	7	47	18	2	43	35	11	30
126	0	0	0	7	47	18	2	43	35	11	30
127	0	0	0	7	47	18	2	43	35	11	30
128	0	0	0	7	47	18	2	43	35	11	30
129	0	0	0	7	47	18	2	43	35	11	30
130	0	0	0	7	47	18	2	43	35	11	30
131	0	0	0	7	47	18	2	43	35	11	30
132	0	0	0	7	47	18	2	43	35	11	30
133	0	0	0	7	47	18	2	43	35	11	30
134	0	0	0	7	47	18	2	43	35	11	30
135	0	0	0	7	47	18	2	43	35	11	30
136	0	0	0	7	47	18	2	43	35	11	30
137	0	0	0	7	47	18	2	43	35	11	30
138	0	0	0	7	47	18	2	43	35	11	30
139	0	0	0	7	47	18	2	43	35	11	30
140	0	0	0	7	47	18	2	43	35	11	30
141	0	0	0	7	47	18	2	43	35	11	30
142	0	0	0	7	47	18	2	43	35	11	30
143	0	0	0	7	47	18	2	43	35	11	30
144	0	0	0	7	47	18	2	43	35	11	30
14											

2007-2008 WSU Hard Winter Wheat Varietal Trial

Madsen Border							
1	30	11	24	29	19	9	23
2	29	17	6	14	10	19	11
3	28	20	14	9	4	17	15
4	27	21	22	6	5	5	25
5	26	12	1	1	11	13	14
6	25	25	8	17	23	24	30
7	24	15	5	20	7	3	8
8	23	27	28	18	16	16	26
9	22	9	10	12	26	10	28
10	21	18	13	27	13	2	20
11	20	29	19	2	24	21	18
12	19	3	4	28	21	21	12
13	18	7	23	3	25	4	1
14	17	16	26	15	22	4	22
15	16	30	2	8	30	6	7
Madsen Border							

Planting Date	
Almira	7-Sep
Dayton	26-Sep
Lamont	12-Sep
Pullman	27-Sep
Reardan	24-Sep
Walla Walla	2-Oct

	RED
	WHITE

Plots are randomized with 4 replications. There is a Madsen border strip on each side of the nursery.

<http://variety.wsu.edu>

#	ENTRY
1	FINLEY
2	HATTON
3	BAUERMEISTER
4	WA008067
5	WA008022
6	WA008068
7	FARNUM
8	WA008023
9	WA008069
10	WA008060
11	WA008061
12	BOUNDARY
13	IDO621
14	ORN00B553
15	EDDY

#	ENTRY
16	BZ9W02-2032
17	ACS 52025
18	ML9W05-2506
19	AGRIPRO PALADIN
20	W98-344
21	TX97F4-33-1B
22	BC002-2
23	DECLO
24	DH99-37-100
25	MDM
26	WA008070
27	UI DARWIN
28	PALOMINO
29	NUDAKOTA
30	ELTAN

FOR MORE INFORMATION.....

JOHN BURNS (509)335-5831/595-5379

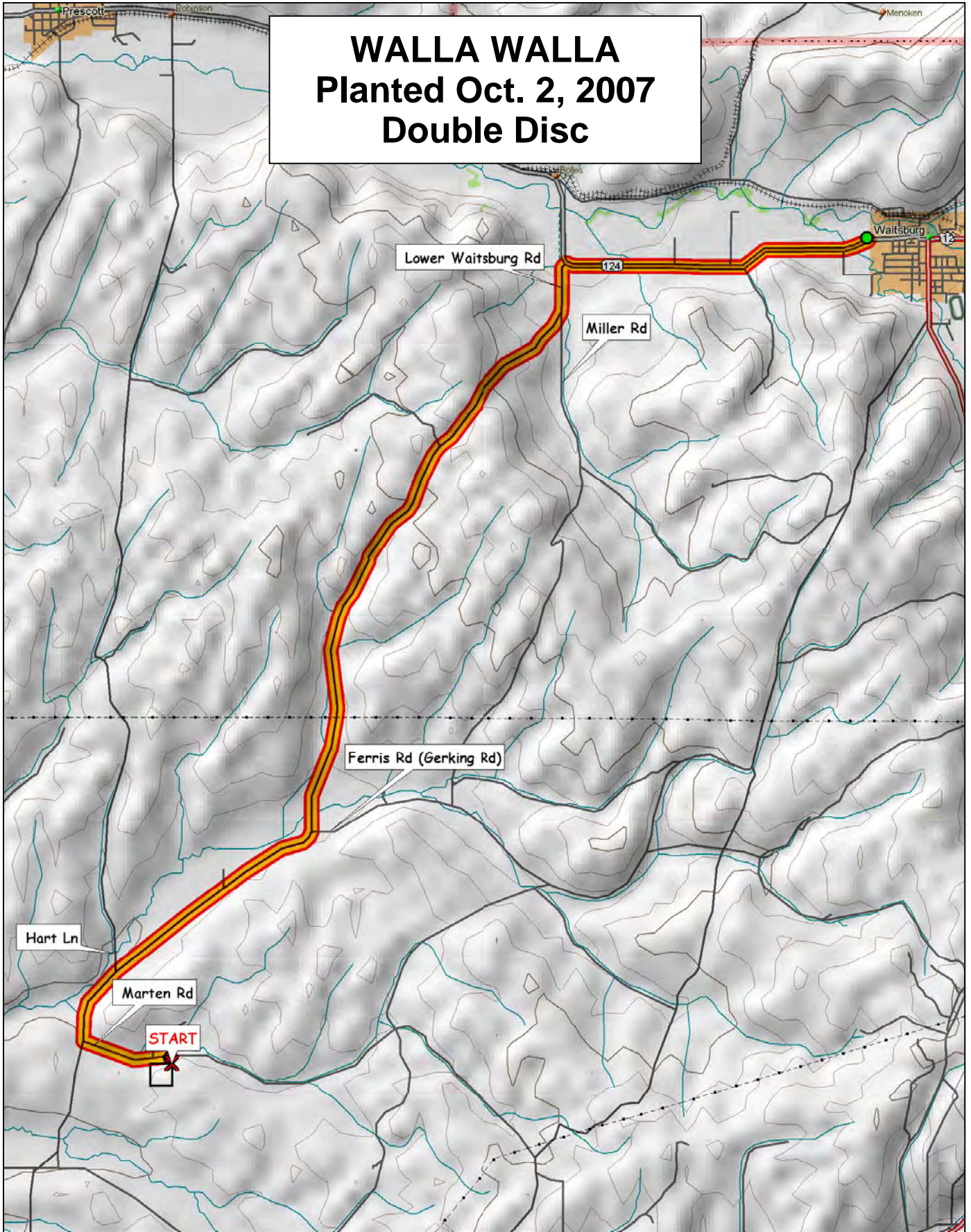
JOHN KUEHNER (509)335-4470/595-0013

Department of Crop and Soil Sciences

PO Box 646420

Pullman, WA 99164-6420

WALLA WALLA Planted Oct. 2, 2007 Double Disc



© 2001 DeLorme. Topo USA® 3.0

Zoom Level: 11-4 Datum: WGS84

Scale 1 : 75 000

1" = 118 m

