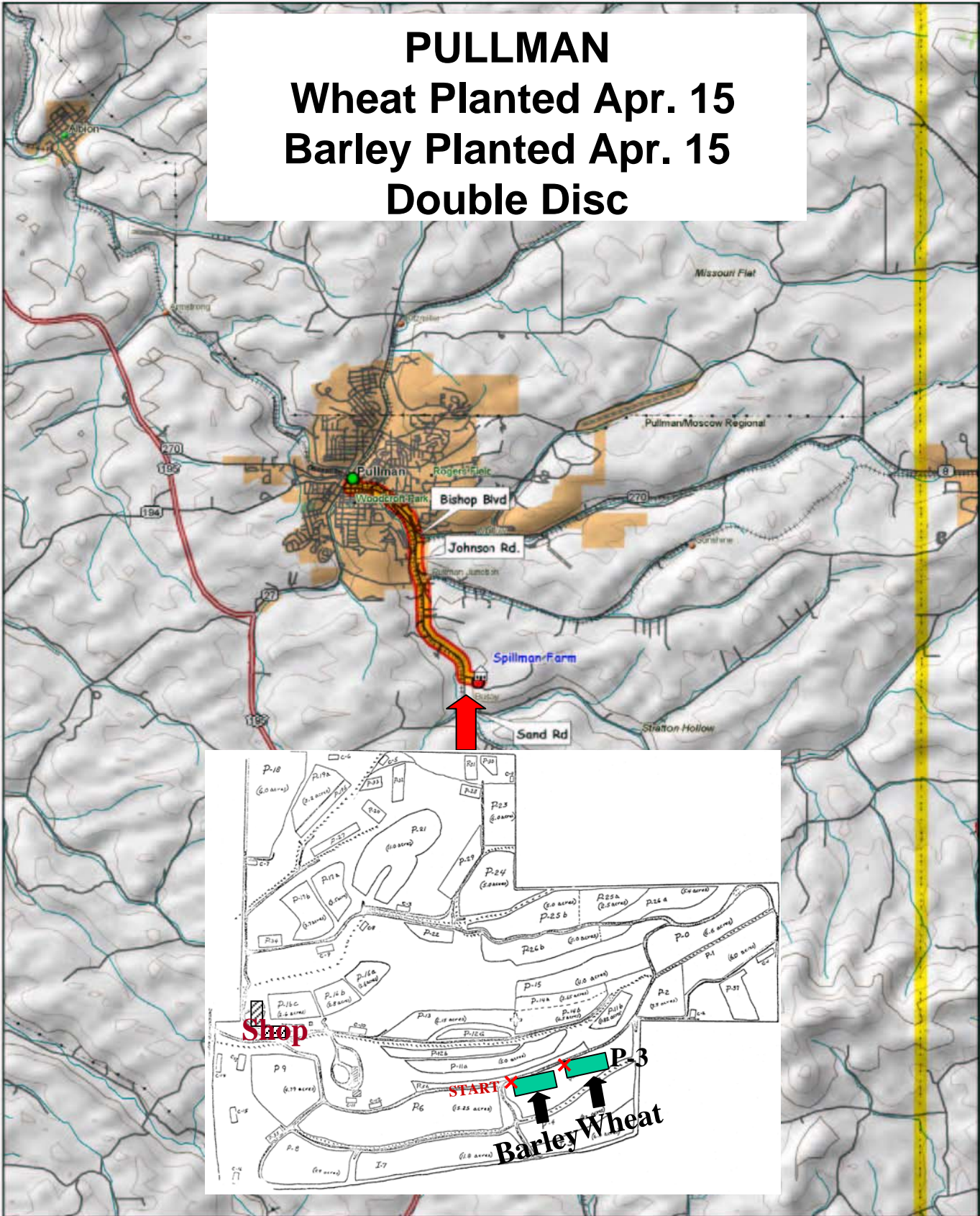


**PULLMAN**  
**Wheat Planted Apr. 15**  
**Barley Planted Apr. 15**  
**Double Disc**



© 2001 DeLorme, Topo USA® 3.0

Zoom Level: 11-0 Datum: WGS84

Scale 1 : 100 000

1" = 1.250 miles



# 2010 WSU Spring Barley Variety Trial

Range

9	06WA-406.28	LENETAH	PINNACLE	CDC COPELAND	WAS 1	06WA-406.9	MEREDITH	06WA-423.21	AC METCALFE	HAXBY	RADIANT	HARRINGTON
8	BOB	WAS 3	SPAULDING	06WA-421.23	05WA-316.K	06WA-426.49	CLEARWATER	WAS 4	05WA-316.99	04WZN-124	06WA-412.4	06WA-426.42
7	WAS 2	2004NZ151	06WA-458.14	04WA-113.22	MERESSE	07MB-390	BENTLEY	BARONESSE	TETONIA	05WA-329.49	2004NZ163	CHAMPION
6	2004NZ151	BARONESSE	06WA-426.42	06WA-426.49	04WZN-124	BENTLEY	PINNACLE	2004NZ163	WAS 4	06WA-421.23	TETONIA	HARRINGTON
5	05WA-316.99	04WA-113.22	05WA-329.49	06WA-423.21	MERESSE	CLEARWATER	WAS 1	HAXBY	SPAULDING	06WA-412.4	MEREDITH	06WA-458.14
4	RADIANT	CDC COPELAND	05WA-316.K	LENETAH	WAS 3	06WA-406.9	06WA-406.28	BOB	CHAMPION	WAS 2	07MB-390	AC METCALFE
3	LENETAH	BOB	06WA-426.42	WAS 2	MEREDITH	WAS 3	PINNACLE	CHAMPION	BENTLEY	WAS 4	05WA-329.49	06WA-421.23
2	SPAULDING	06WA-406.9	06WA-458.14	HARRINGTON	MERESSE	05WA-316.K	CDC COPELAND	HAXBY	AC METCALFE	05WA-316.99	TETONIA	06WA-426.49
1	04WZN-124	BARONESSE	2004NZ163	CLEARWATER	RADIANT	04WA-113.22	06WA-406.28	06WA-412.4	2004NZ151	07MB-390	06WA-423.21	WAS 1
Row	1	2	3	4	5	6	7	8	9	10	11	12

# 2010 PULLMAN P-3 Spring Barley

SEU-Spring Barley Trials

SEU-Spring Barley Trial

SEU-Spring Barley Trial

SEU-Spring Barley Trial

SEU-Spring Barley Trial

BORDER

BORDER

BORDER

27	9	13	8	32	28	14	24	6	10	2	5
1	34	7	26	18	29	11	35	20	22	25	23
33	16	30	21	36	31	15	3	12	19	17	4
16	3	23	29	22	15	13	17	35	26	12	5
20	21	19	24	36	11	32	10	7	25	14	30
2	8	18	9	34	28	27	1	4	33	31	6
9	1	23	33	14	34	13	4	15	35	19	26
7	28	30	5	36	18	8	10	6	20	12	29
22	3	17	11	2	21	27	25	16	31	24	32

SP. BARLEY VARIETY TRIAL

2010 WSU Spring *BARLEY* Varietal Trial

YECORA ROJO									
1	2	3	4	5	6	7	8	9	
27	7	9	2	20	16	33	1	27	
9	28	1	8	21	3	16	34	9	
13	30	23	18	19	23	30	7	13	
8	5	33	9	24	29	21	26	8	
32	36	14	34	36	22	36	18	32	
28	18	34	28	11	15	31	29	28	
14	8	13	27	32	13	15	11	14	
24	10	4	1	10	17	3	35	24	
6	6	15	4	7	35	12	20	6	
10	20	35	33	25	26	19	22	10	
2	12	19	31	14	12	17	25	2	
5	29	26	6	30	5	4	23	5	
SW SPRING WHEAT or YECORA ROJO									

1  
2  
3  
4  
5  
6  
7  
8  
9  
10  
11  
12

Planting Dates

Almira	7-Apr
Bickleton	31-Mar
Colfax	15-Apr
Dayton	19-Mar
Farmington	24-Mar
Lamont	1-Apr
Mayview	16-Apr
Pullman	15-Apr
Reardan	26-Mar
St. John	1-Apr
Walla Walla	5-Mar

BARLEY

1	BOB	19	05WA-329.49
2	RADIANT	20	05WA-316.99
3	BARONESSE	21	04WA-113.22
4	CHAMPION	22	04WVZ-124
5	HARRINGTON	23	06WA-426.42
6	AC METCALFE	24	06WA-423.21
7	SPAULDING	25	06WA-412.4
8	CDC COPELAND	26	06WA-421.23
9	LENETAH	27	06WA-406.28
10	HAXBY	28	06WA-406.9
11	CLEARWATER	29	06WA-426.49
12	TETONIA	30	06WA-458.14
13	PINNACLE	31	07MB-390
14	MEREDITH	32	WAS 1
15	BENTLEY	33	WAS 2
16	2004NZ151	34	WAS 3
17	2004NZ163	35	WAS 4
18	05WA-316.K	36	MERESSE

RANDOMIZED PLOTS:

3 REPLICATIONS

	2-ROW
	HULLESS