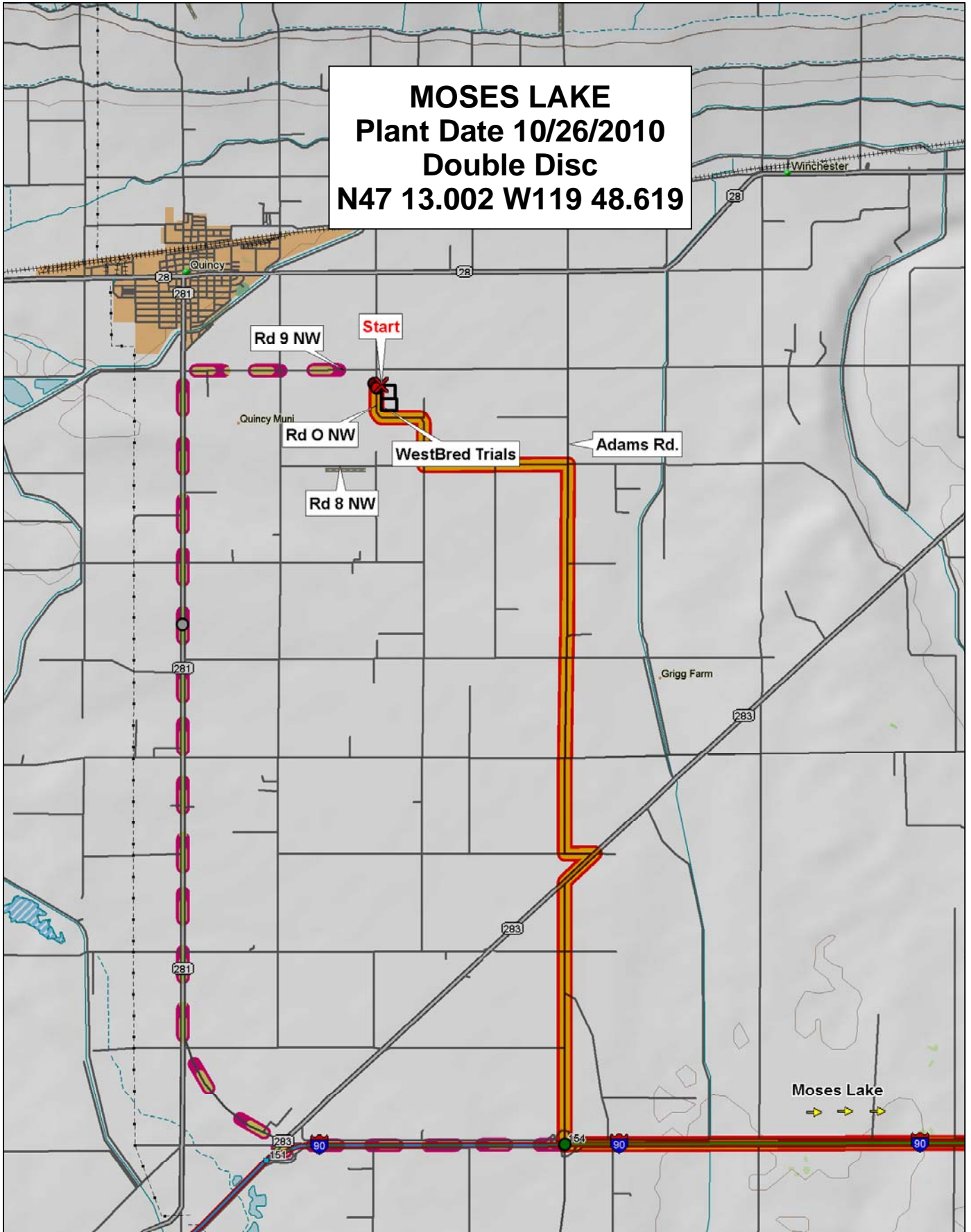


MOSES LAKE
Plant Date 10/26/2010
Double Disc
N47 13.002 W119 48.619

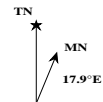
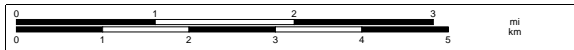


© 2001 DeLorme. Topo USA® 3.0

Zoom Level: 11-2 Datum: WGS84

Scale 1 : 87 500

1" = 1.38 mi



2011 WSU Winter Wheat Variety Trials

Range

Soft White Winter Variety Trial

Irrigated Hard Winter Variety Trial

9	Border	50	13	46	28	37	43	49	24	36	1	18	10	14	11	32	40	39	52	27	44	Border	31	10	22	16	6	18	26	30	29	35	25	34	Border
8		15	42	30	17	45	59	33	7	19	31	8	6	60	12	57	5	51	16	56	25		32	1	21	19	33	36	5	9	3	28	17	24	
7		21	34	54	26	23	48	53	38	58	47	22	4	55	35	9	2	3	20	41	29		2	14	23	12	7	13	20	11	4	27	8	15	
6		10	49	28	25	44	34	46	40	18	36	52	58	13	24	22	47	35	1	17	41		28	19	31	1	11	33	27	16	29	8	30	23	
5		48	19	30	8	3	38	27	43	9	32	60	15	5	31	26	11	37	56	21	57		36	25	24	32	4	17	7	15	9	14	18	20	
4		7	16	50	23	14	4	39	20	42	53	29	51	54	59	12	33	6	55	45	2		34	12	22	13	5	26	10	35	3	6	21	2	
3		48	4	11	49	27	39	43	5	37	10	24	40	50	55	47	38	3	12	7	42		36	11	21	2	1	16	10	9	25	22	19	17	
2		20	59	16	8	34	56	32	26	28	6	29	53	44	9	30	22	41	45	57	31		4	23	18	7	8	3	33	24	35	5	12	29	
1		35	58	2	15	36	21	25	33	17	60	46	54	14	1	52	23	18	19	13	51		13	31	34	32	20	28	26	27	6	15	30	14	
Row		1	2	3	4	5	6	7	8	9	10	11	12	13	14	15	16	17	18	19	20		1	2	3	4	5	6	7	8	9	10	11	12	



2011 Irrigated Hard Winter Wheat Variety Trial

Entry	Name	Class	Entry	Name	Class
1	Bauermeister	HRW	19	Genesi	HRW
2	WA 8118	HRW	20	UICF-Grace	HWWI
3	WA 8120	HRW	21	UI Silver	HWW
4	WA8139	HRW	22	OR2080156H	HWW
5	WA8140	HRW	23	OR2080111H	HWW
6	Boundary	HRW	24	Sunrise	SRW
7	Norwest 553	HRW	25	WA 8115	SWW
8	Eddy	HRW	26	YS18	SWW
9	WB-Tucson	HRW	27	YS20	SWW
10	ML9W05-2501	HRW	28	YS27	SWW
11	AgriPro Paladin	HRW	29	YS29	SWW
12	Whetstone	HRW	30	Bora	HRW
13	Declo	HRW	31	Tyche	HRW
14	Peregrine	HRW	32	WA8146	HWW
15	Accipiter	HRW	33	WA 8147	SWF
16	Esperia	HRW	34	NSA06-2153A	SWW
17	Altigo	HRW	35	UI Winchester	HRS
18	Azimut	HRW	36	Stephens	SWW

2011-SW Winter Wheat Trial

Entry	Name	Class
1	Coda	WC
2	Chukar	WC
3	Cara	WC
4	Bruehl	WC
5	ARS970075-3C	WC
6	ARS970163-4C	WC
7	ARS97230-6C	WC
8	ARS98X402-1C	WC
9	Cara +25%	WC
10	Chukar +25%	WC
11	Madsen	SWW
12	Eltan	SWW
13	Rod	SWW
14	Finch	SWW
15	Masami	SWW
16	Xerpha	SWW
17	WA 8114	SWW
18	WA 8116	SWW
19	WA 8092	SWW
20	WA 8094	SWW
21	WA8134	SWW
22	WA8135	SWW
23	WA8136	SWW
24	ARS960277L	SWW
25	ARS970161-3L	SWW
26	IDO663	SWW
27	Bruneau	SWW
28	Bitterroot	SWW
29	Lambert	SWW
30	Brundage 96	SWW

Entry	Name	Class
31	96-16702A	SWW
32	Stephens	SWW
33	Tubbs 06	SWW
34	Skiles	SWW
35	Goetze/Skiles	SWW
36	OR2040726	SWW
37	OR2071628	SWW
38	OR2070385	SWW
39	WB-528	SWW
40	BZ6W02-616	SWW
41	Legion	SWW
42	AP Legacy	SWW
43	AP Badger	SWW
44	03PN107#3	SWW
45	03PN108#21	SWW
46	WA8142	SWW
47	WA8143	SWW
48	WA8144	SWW
49	WA8145	SWW
50	UICF-Brundage	SWWI
51	ID00-475-2DH	SWW
52	ORCF-102	SWWI
53	ORCF-103	SWWI
54	AP 700 CL	SWW
55	Sunrise	SRW
56	NSA06-2153A	SWW
57	Madsen/Rod	SWW
58	Rod/WB-528	SWW
59	Eltan/Tubbs 06	SWW
60	Rod/Tubbs 06	SWW