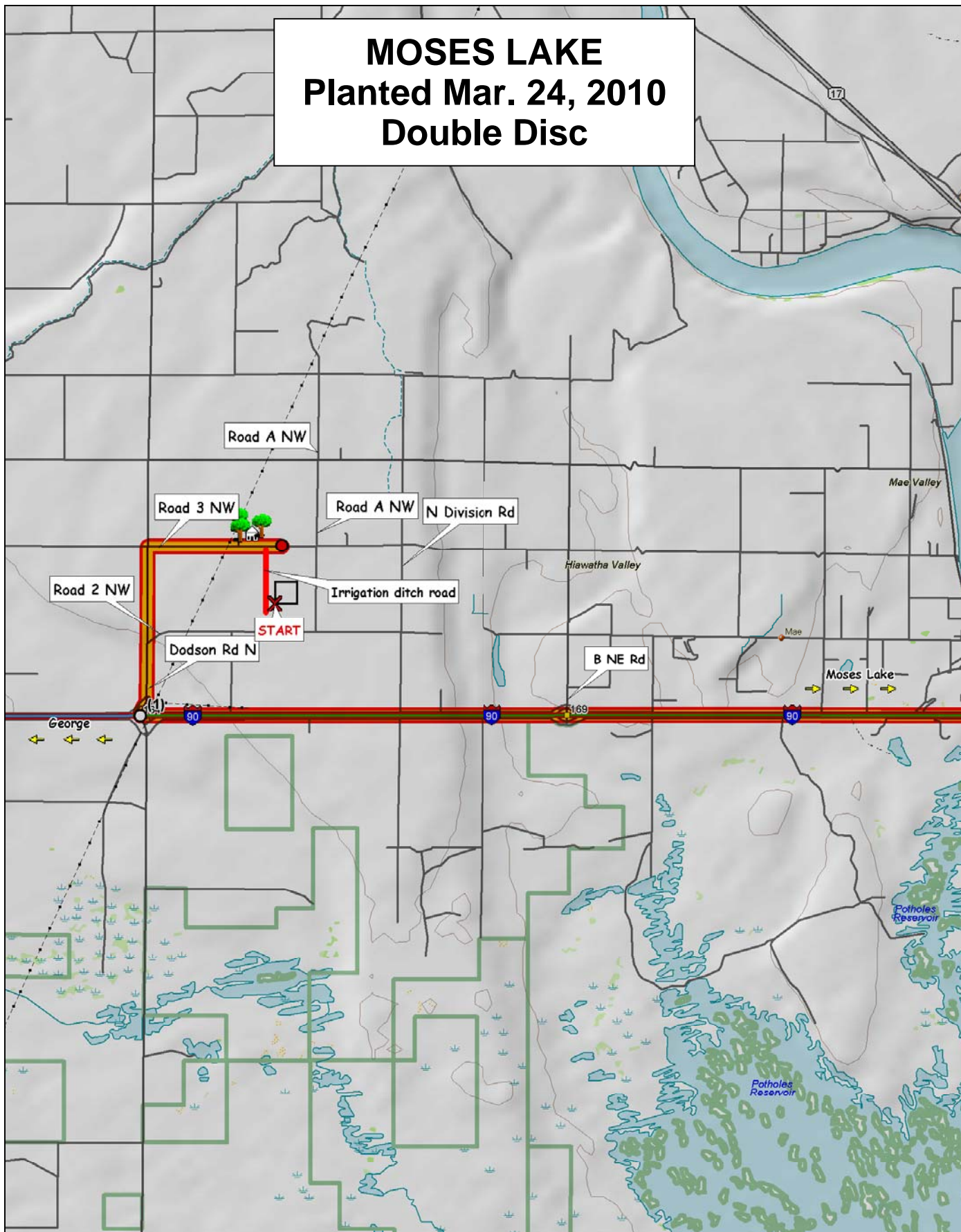


MOSES LAKE Planted Mar. 24, 2010 Double Disc

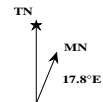


© 2001 DeLorme. Topo USA® 3.0

Zoom Level: 11-0 Datum: WGS84

Scale 1 : 100,000

1" = 1.58 mi



2010 WSU Irrigated Spring Wheat Variety Trial

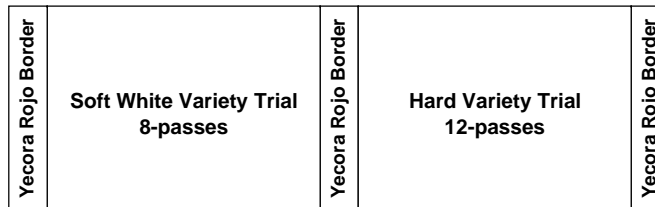
Range

Soft White Spring Wheat

Hard Spring Wheat

9	WA008110	LOUISE	JD +25%	WHIT	ALPOWA	WA008105	WA008113	WA008106	Yecora Rojo Border	RSI40240R	LASSIK	WA008123	WA008100	CABERNET	SARAGOLLA	KELSE	PATWIN	OR4990114	WA008074	MAESTRALE	MACON
8	IDO669	IDO599	NICK	ZAK	BABE	DIVA	WA008089	JD		HANK	ARS03438LS	SOLANO	WA008122	OTIS-RT2	KELSE-RT2	NORMANNO	IDO665	MALBEC	HOLLIS	BULLSEYE	IDO667
7	WA008124	CATALDO	IDO671	WA008107	WAKANZ	EDEN	ALTURAS	EDEN +25%		UI WINCHESTER	TARA 2002	WESTBRED 926	SCARLET	OTIS	BUCK PRONTO	JEFFERSON	EXPRESSO	CLEAR WHITE	WB-FUZION	BR7030	ARS03173LS
6	BABE	ALPOWA	WA008107	IDO599	EDEN +25%	WA008124	LOUISE	DIVA		SOLANO	IDO667	OR4990114	BULLSEYE	SARAGOLLA	ARS03173LS	MAESTRALE	BUCK PRONTO	JEFFERSON	SCARLET	OTIS-RT2	WA008074
5	WA008113	ZAK	CATALDO	WA008089	WA008106	IDO669	ALTURAS	WHIT		UI WINCHESTER	BR7030	CABERNET	WA008100	HOLLIS	ARS03438LS	KELSE-RT2	WB-FUZION	WESTBRED 926	NORMANNO	PATWIN	WA008123
4	NICK	WA008105	WA008110	WAKANZ	JD +25%	EDEN	IDO671	JD		CLEAR WHITE	MALBEC	OTIS	KELSE	HANK	RSI40240R	EXPRESSO	IDO665	LASSIK	WA008122	MACON	TARA 2002
3	EDEN	WA008110	WA008113	BABE	WA008124	WHIT	NICK	WA008089		UI WINCHESTER	WB-FUZION	WA008123	IDO667	ARS03438LS	BUCK PRONTO	SCARLET	HOLLIS	MAESTRALE	WA008122	PATWIN	RSI40240R
2	IDO669	IDO671	EDEN +25%	ALPOWA	LOUISE	IDO599	ALTURAS	CATALDO		NORMANNO	LASSIK	WESTBRED 926	OTIS-RT2	SOLANO	MACON	KELSE	KELSE-RT2	TARA 2002	CLEAR WHITE	WA008100	BULLSEYE
1	WA008105	JD +25%	ZAK	DIVA	WA008107	WA008106	WAKANZ	JD		WA008074	OR4990114	HANK	ARS03173LS	IDO665	CABERNET	EXPRESSO	BR7030	MALBEC	OTIS	JEFFERSON	SARAGOLLA
Row	1	2	3	4	5	6	7	8		1	2	3	4	5	6	7	8	9	10	11	12

*There is a Yecora Rojo border strip on each end of the trials and one between the soft white and hard spring wheat trials.



2010 MOSES LAKE

YECORA ROJO	13	3	24	6	1	10	14	11	29	13	21	19	27	31	4	24	16	5	32	17
	19	18	5	2	7	8	9	22	11	36	25	20	33	34	30	8	28	2	15	9
	15	17	20	12	4	21	16	23	7	3	10	1	18	14	6	26	23	12	22	35
	7	1	12	18	23	15	3	8	25	9	16	15	31	35	32	14	6	1	33	5
	14	2	17	9	11	19	16	6	7	22	27	19	2	36	34	12	10	30	24	21
	5	10	13	4	24	21	20	22	23	28	18	4	11	29	26	8	13	20	17	3
	21	13	14	7	15	6	5	9	7	12	21	9	36	14	1	2	32	20	24	29
	19	20	23	1	3	18	16	17	30	13	10	33	25	17	4	34	3	23	19	15
	10	24	2	8	12	11	4	22	5	16	11	35	8	27	26	22	28	18	6	31

Spring Wheat Breeding Trials

SWH Spring VT

Irrigated Hard Spring VT

Entry list - Hard Spring (Irrigated)

#	Variety	#	Variety	#	Variety	#	Variety
1	SCARLET	10	WESTBRED 926	19	WA008100	28	MALBEC
2	HOLLIS	11	HANK	20	WA008122	29	RSI40240R
3	TARA 2002	12	WB-FUZION	21	WA008123	30	NORMANNO
4	KELSE	13	LASSIK	22	BR7030	31	SARAGOLLA
5	WA008074	14	BUCK PRONTO	23	CLEAR WHITE	32	MAESTRALE
6	JEFFERSON	15	BULLSEYE	24	PATWIN	33	OTIS-RT2
7	UI WINCHESTER	16	OR4990114	25	SOLANO	34	KELSE-RT2
8	IDO665	17	MACON	26	EXPRESSO	35	ARS03173LS
9	IDO667	18	OTIS	27	CABERNET	36	ARS03438LS

This map includes only the portion of the nursery that contains the Variety Testing Trials. These trials are planted first in the nursery.

2010 WSU Spring *WHEAT* Varietal Trial

BARLEY or YECORA ROJO									
1	2	3	4	5	6	7	8	9	
10	19	21	5	14	7	15	19	13	
24	20	13	10	2	1	17	18	3	
2	23	14	13	17	12	20	5	24	
8	1	7	4	9	18	12	2	6	
12	3	15	24	11	23	4	7	1	
11	18	6	21	19	15	21	8	10	
4	16	5	20	16	3	16	9	14	
22	17	9	22	6	8	23	22	11	
YECORA ROJO									

SOFT WHITE

Planting Dates

Almira	7-Apr
Bickleton	31-Mar
Colfax	15-Apr
Connell	5-Mar
Dayton	19-Mar
Endicott	25-Mar
Farmington	24-Mar
H. Heaven	4-Mar
Lamont	1-Apr
Lind	9-Mar
Mayview	16-Apr
Moses Lake	24-Mar
Pullman	15-Apr
Reardan	26-Mar
St. John	1-Apr
Walla Walla	5-Mar

SOFT WHITE

1	ALPOWA
2	ZAK
3	LOUISE
4	WAKANZ
5	NICK
6	WHIT
7	BABE
8	DIVA
9	WA008089
10	WA008105
11	WA008106
12	WA008107

13	WA008110
14	WA008113
15	WA008124
16	ALTURAS
17	CATALDO
18	IDO599
19	IDO669
20	IDO671
21	EDEN
22	JD
23	EDEN +25
24	JD +25

FOR MORE INFORMATION.....

STEPHEN GUY (509)335-5831

JOHN KUEHNER (509)335-4470

MARY LAUVER (509)-335-4470

Department of Crop and Soil Sciences

	SOFT WHITE
	CLUB

