

2007-2008 CONNELL, LIND, RITZVILLE

Soft White Variety Trial

Hard Variety Trial

EDWIN BORDER	12	23	15	29	48	26	19	39	16	34	EDWIN BORDER	23	11	15	25	14	30	EDWIN BORDER
	46	20	42	38	7	14	9	49	6	36		12	18	20	28	26	8	
	31	32	24	33	4	40	27	28	30	11		1	22	7	6	27	4	
	13	37	22	1	3	47	18	2	43	35		3	16	10	2	29	21	
	44	8	45	17	41	21	10	25	50	5		24	13	5	17	19	9	
	35	38	4	22	29	6	3	42	15	24		23	11	5	4	10	19	
	50	23	13	5	37	47	43	20	49	41		7	16	26	13	24	21	
	17	28	11	44	19	40	32	2	48	12		3	15	8	30	22	25	
	1	34	46	30	16	36	26	27	45	21		28	2	27	12	18	20	
	7	9	31	25	18	14	8	39	10	33		29	14	9	6	1	17	
	13	28	5	2	38	22	42	25	14	21		24	6	14	22	1	8	
	12	35	26	50	27	46	3	37	17	4		4	19	13	10	28	5	
	10	1	11	23	48	32	47	6	29	39		23	26	2	30	16	7	
	16	30	45	31	18	15	7	41	20	34		15	27	9	18	29	3	
	49	44	9	24	36	8	43	33	19	40		25	12	21	20	17	11	
	41	42	43	44	45	46	47	48	49	50		25	26	27	28	29	30	
	40	39	38	37	36	35	34	33	32	31		24	23	22	21	20	19	
	21	22	23	24	25	26	27	28	29	30		13	14	15	16	17	18	
	20	19	18	17	16	15	14	13	12	11		12	11	10	9	8	7	
	1	2	3	4	5	6	7	8	9	10		1	2	3	4	5	6	

2007-2008 WSU Winter Wheat Varietal Trial

EDWIN BORDER	12	23	15	29	48	26	19	39	16	34	EDWIN BORDER
	46	20	42	38	7	14	9	49	6	36	
	31	32	24	33	4	40	27	28	30	11	
	13	37	22	1	3	47	18	2	43	35	
	44	8	45	17	41	21	10	25	50	5	
	35	38	4	22	29	6	3	42	15	24	
	50	23	13	5	37	47	43	20	49	41	
	17	28	11	44	19	40	32	2	48	12	
	1	34	46	30	16	36	26	27	45	21	
	7	9	31	25	18	14	8	39	10	33	
	13	28	5	2	38	22	42	25	14	21	
	12	35	26	50	27	46	3	37	17	4	
	10	1	11	23	48	32	47	6	29	39	
	16	30	45	31	18	15	7	41	20	34	
	49	44	9	24	36	8	43	33	19	40	
	41	42	43	44	45	46	47	48	49	50	
40	39	38	37	36	35	34	33	32	31		
21	22	23	24	25	26	27	28	29	30		
20	19	18	17	16	15	14	13	12	11		
1	2	3	4	5	6	7	8	9	10		

Planting Date	
Colton	25-Sep
Connell	5-Sep
Harrington	13-Sep
Lind	11-Sep
Ritzville	5-Sep
St. Andrews	6-Sep

	COMMON
	CLUB



#	ENTRY	#	ENTRY
1	CODA	26	ORH010085
2	CHUKAR	27	OR2050910
3	CARA	28	BU6W00-523
4	BRUEHL	29	WB 528
5	ARS970278-2	30	BU6W99-456
6	ARS970075-3	31	GEORGE
7	ARS970168-2C	32	RJAMES
8	MADSEN	33	CASHUP
9	ELTAN	34	CONCEPT
10	ROD	35	MJ-9
11	FINCH	36	SALUTE
12	MASAMI	37	99X1009-23
13	XERPHA	38	ORF2267-03
14	WA008063	39	ID990435
15	WA008064	40	ID02-859
16	WA008065	41	ORCF-101
17	WA008066	42	ORCF-102
18	ARS960277L	43	ORCF-103
19	LAMBERT	44	AP 700 CL
20	BRUNDAGE 96	45	BZ6WM02-1020
21	SIMON	46	BZ6WM04-1066
22	9222407A	47	MADSEN/ROD
23	9364901A	48	ELTAN/MADSEN
24	STEPHENS	49	ELTAN/TUBBS06
25	TUBBS 06	50	ROD/TUBBS06

Plots are randomized with 4 replications.
There is a Edwin border strip on each side of the nursery.

2007-2008 WSU Hard Winter Wheat Varietal Trial

EDWIN BORDER	23	11	15	25	14	30	EDWIN BORDER
	12	18	20	28	26	8	
	1	22	7	6	27	4	
	3	16	10	2	29	21	
	24	13	5	17	19	9	
	23	11	5	4	10	19	
	7	16	26	13	24	21	
	3	15	8	30	22	25	
	28	2	27	12	18	20	
	29	14	9	6	1	17	
	24	6	14	22	1	8	
	4	19	13	10	28	5	
	23	26	2	30	16	7	
	15	27	9	18	29	3	
	25	12	21	20	17	11	
	25	26	27	28	29	30	
24	23	22	21	20	19		
13	14	15	16	17	18		
12	11	10	9	8	7		
1	2	3	4	5	6		

Planting Date

Connell	5-Sep
Horse Heaven	15-Oct
Lind	11-Sep
Ritzville	5-Sep
St. Andrews	6-Sep

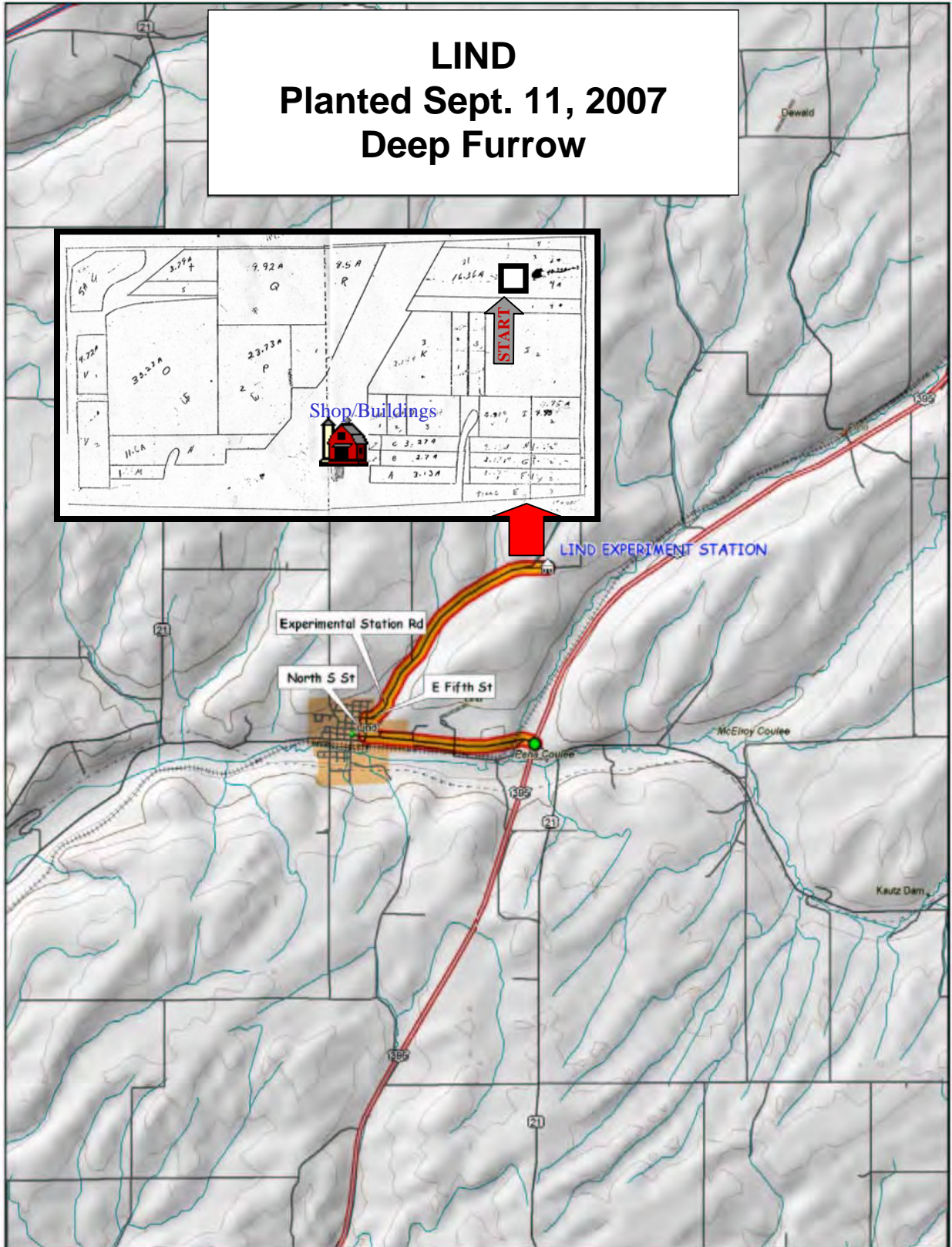
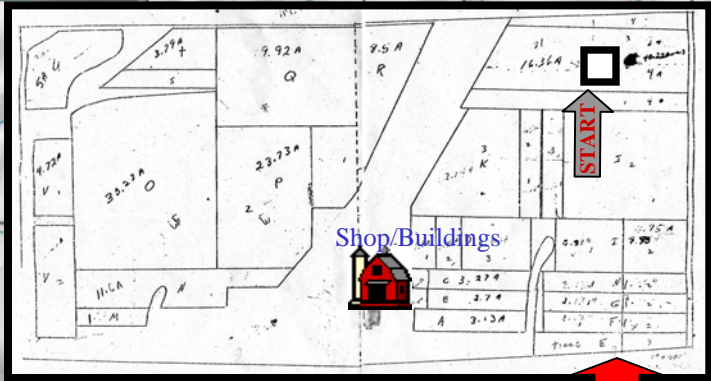


Plots are randomized with 4 replications. There is a Edwin border strip on each side of the nursery.

#	ENTRY
1	FINLEY
2	HATTON
3	BAUERMEISTER
4	WA008067
5	WA008022
6	WA008068
7	FARNUM
8	WA008023
9	WA008069
10	WA008060
11	WA008061
12	BOUNDARY
13	IDO621
14	ORN00B553
15	EDDY

#	ENTRY
16	BZ9W02-2032
17	ACS 52025
18	ML9W05-2506
19	AGRIPRO PALADIN
20	W98-344
21	TX97F4-33-1B
22	BC002-2
23	DECLO
24	DH99-37-100
25	MDM
26	WA008070
27	UI DARWIN
28	PALOMINO
29	NUDAKOTA
30	ELTAN

LIND Planted Sept. 11, 2007 Deep Furrow



© 2001 DeLorme, Topo USA® 3.0
Zoom Level: 11-0 Datum: WGSS4

Scale 1 : 100,000

