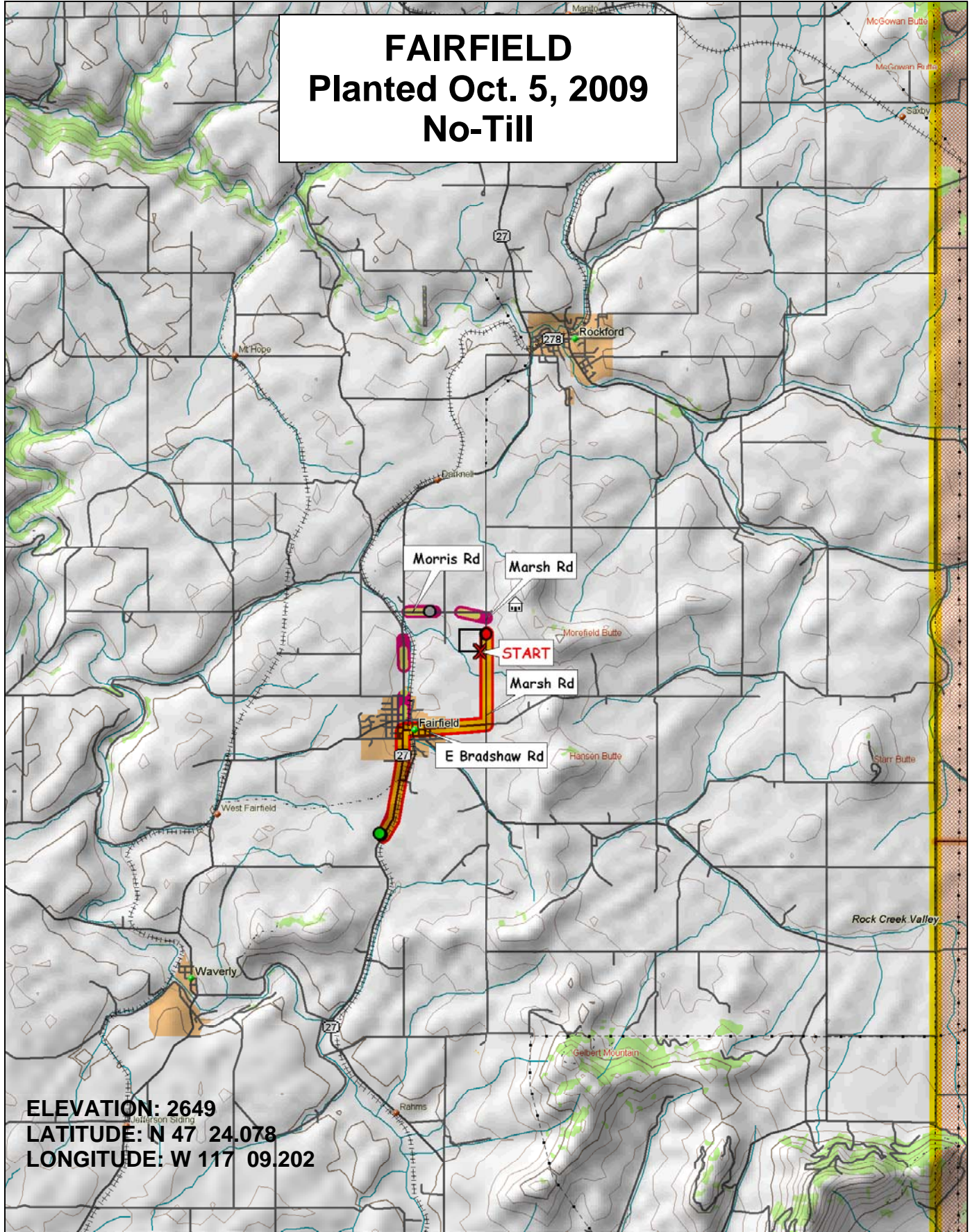


FAIRFIELD

Planted Oct. 5, 2009
No-Till



ELEVATION: 2649
LATITUDE: N 47 24.078
LONGITUDE: W 117 09.202

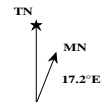


© 2001 DeLorme. Topo USA® 3.0

Zoom Level: 11-0 Datum: WGS84

Scale 1 : 100,000

1" = 158 mi



2009-2010 WSU Soft White Winter Variety Trial

Range

| | | | | | | | | | | | | | | | | | | | | |
|-----|------------------|-------------------|-----------------|--------------|-------------------|-------------------|----------------|------------------|-------------------|------------------|-----------------|------------------|-----------------|-------------------|------------------|------------------|-------------------|--------------|------------------|----------------|
| 9 | KCF9003 | ELTAN | AP LEGACY | REA STEPHENS | GOETZE/ SKILES | RJAMES | KCF9002 | WA008116 | SKILES | CODA | WA008063 | CARA (HSR) | ROD | CHUKAR (HSR) | BRUNDAGE 96 | WB-528 | OR2060395 | ID00-475-2DH | ARS970170-2L | SALUTE |
| 8 | FINCH | GEORGE | BITTERROOT | XERPHA | LEGION | ELTAN/ TUBBS06 | SIMON | ARS970184- 1C | WA008092 | LAMBERT | ARS970163-4C | ARS970071-3C | ROD/ TUBBS06 | MADSEN | MADSEN/ ROD | ARS970075-3C | ID02-859 | MASAMI | DH99-55-2 | WA008117 |
| 7 | WA008094 | STEPHENS | ORCF-103 | ARS960277L | WA008115 | KCF9001 | ORCF-102 | OR2040726 | ELTAN/ MADSEN | CDC PTARMIGAN | WA008114 | BRUEHL | AP 700 CL | TUBBS 06 | BRUEHL (HSR) | CHUKAR | CARA | WA008093 | BZ6W02-616 | 9364901A |
| 6 | CARA (HSR) | KCF9002 | REA STEPHENS | WA008117 | SALUTE | STEPHENS | AP LEGACY | WB-528 | WA008063 | SKILES | ID00-475-2DH | ELTAN/ MADSEN | ELTAN | WA008116 | WA008114 | CDC PTARMIGAN | TUBBS 06 | CODA | XERPHA | BZ6W02-616 |
| 5 | KCF9001 | WA008092 | BITTERROOT | ARS970163-4C | CARA | OR2040726 | ARS970170-2L | RJAMES | BRUEHL (HSR) | BRUNDAGE 96 | ROD/ TUBBS06 | FINCH | ARS970075-3C | LAMBERT | ARS960277L | CHUKAR (HSR) | GOETZE/ SKILES | DH99-55-2 | WA008094 | MADSEN/ ROD |
| 4 | ARS970184- 1C | MASAMI | KCF9003 | WA008115 | ROD | BRUEHL | OR2060395 | WA008093 | GEORGE | ORCF-102 | 9364901A | ID02-859 | ORCF-103 | ELTAN/ TUBBS06 | MADSEN | SIMON | ARS970071-3C | AP 700 CL | LEGION | CHUKAR |
| 3 | KCF9001 | BRUEHL | CHUKAR (HSR) | KCF9002 | ARS970170-2L | OR2060395 | RJAMES | ARS970075-3C | GOETZE/ SKILES | CARA (HSR) | WA008116 | WB-528 | KCF9003 | AP 700 CL | CDC PTARMIGAN | OR2040726 | CARA | MADSEN | ARS970184- 1C | GEORGE |
| 2 | WA008093 | ELTAN/ TUBBS06 | MASAMI | ARS970163-4C | STEPHENS | DH99-55-2 | BRUNDAGE 96 | ARS960277L | REA STEPHENS | ARS970071-3C | 9364901A | ORCF-102 | SALUTE | BRUEHL (HSR) | BITTERROOT | WA008114 | BZ6W02-616 | LEGION | MADSEN/ ROD | LAMBERT |
| 1 | TUBBS 06 | ELTAN/ MADSEN | CHUKAR | FINCH | SKILES | WA008094 | WA008117 | SIMON | XERPHA | ROD/ TUBBS06 | AP LEGACY | ORCF-103 | ROD | CODA | ID00-475-2DH | WA008115 | WA008063 | WA008092 | ELTAN | ID02-859 |
| Row | 1 | 2 | 3 | 4 | 5 | 6 | 7 | 8 | 9 | 10 | 11 | 12 | 13 | 14 | 15 | 16 | 17 | 18 | 19 | 20 |

*There is a Xerpha Border strip on each side of the nursery



2009-2010 WSU Winter Wheat Varietal Trial

| Xerpha Border | | | | | | | | | |
|---------------|----|----|----|----|----|----|----|----|----|
| 1 | 35 | 58 | 2 | 15 | 36 | 21 | 25 | 33 | 17 |
| 2 | 20 | 59 | 16 | 8 | 34 | 56 | 32 | 26 | 28 |
| 3 | 48 | 4 | 11 | 49 | 27 | 39 | 43 | 5 | 37 |
| 4 | 7 | 16 | 50 | 23 | 14 | 4 | 39 | 20 | 42 |
| 5 | 48 | 19 | 30 | 8 | 3 | 38 | 27 | 43 | 9 |
| 6 | 10 | 49 | 28 | 25 | 44 | 34 | 46 | 40 | 18 |
| 7 | 21 | 34 | 54 | 26 | 23 | 48 | 53 | 38 | 58 |
| 8 | 15 | 42 | 30 | 17 | 45 | 59 | 33 | 7 | 19 |
| 9 | 50 | 13 | 46 | 28 | 37 | 43 | 49 | 24 | 36 |
| 10 | 1 | 18 | 10 | 14 | 11 | 32 | 40 | 39 | 52 |
| 11 | 60 | 46 | 54 | 14 | 1 | 52 | 23 | 18 | 19 |
| 12 | 54 | 14 | 1 | 52 | 23 | 18 | 19 | 13 | 13 |
| 13 | 14 | 1 | 52 | 23 | 18 | 19 | 13 | 14 | 15 |
| 14 | 1 | 52 | 23 | 18 | 19 | 13 | 14 | 15 | 16 |
| 15 | 1 | 52 | 23 | 18 | 19 | 13 | 14 | 15 | 16 |
| 16 | 1 | 52 | 23 | 18 | 19 | 13 | 14 | 15 | 16 |
| 17 | 1 | 52 | 23 | 18 | 19 | 13 | 14 | 15 | 16 |
| 18 | 1 | 52 | 23 | 18 | 19 | 13 | 14 | 15 | 16 |
| 19 | 1 | 52 | 23 | 18 | 19 | 13 | 14 | 15 | 16 |
| 20 | 1 | 52 | 23 | 18 | 19 | 13 | 14 | 15 | 16 |
| Xerpha Border | | | | | | | | | |

| Planting Date | |
|---------------|--------|
| Almira | 9-Sep |
| Anatone | 17-Sep |
| Colton | 6-Oct |
| Connell | 2-Sep |
| Creston | 11-Sep |
| Dayton | 24-Sep |
| Dusty | 14-Sep |
| Fairfield | 5-Oct |
| Farmington | 5-Oct |
| Harrington | 10-Sep |
| H. Heaven | 22-Oct |
| Lamont | 11-Sep |
| Lind | 1-Sep |
| Mayview | 7-Oct |
| Moses Lake | 16-Oct |
| Pullman | 2-Oct |
| Reardan | 21-Sep |
| Ritzville | 1-Sep |
| St. Andrews | 31-Aug |
| St. John | 18-Sep |
| Walla Walla | 17-Sep |

| # | ENTRY |
|----|--------------|
| 1 | CODA |
| 2 | CHUKAR |
| 3 | CARA |
| 4 | BRUEHL |
| 5 | ARS970075-3C |
| 6 | ARS970071-3C |
| 7 | ARS970184-1C |
| 8 | ARS970163-4C |
| 9 | BRUEHL (HSR) |
| 10 | CARA (HSR) |
| 11 | CHUKAR (HSR) |
| 12 | MADSEN |
| 13 | ELTAN |
| 14 | ROD |
| 15 | FINCH |
| 16 | MASAMI |
| 17 | XERPHA |
| 18 | WA008063 |
| 19 | WA008092 |
| 20 | WA008093 |
| 21 | WA008094 |
| 22 | WA008114 |
| 23 | WA008115 |
| 24 | WA008116 |
| 25 | WA008117 |
| 26 | ARS960277L |
| 27 | ARS970170-2L |
| 28 | REA-STEPHENS |
| 29 | 9364901A |
| 30 | BITTERROOT |

| # | ENTRY |
|----|---------------|
| 31 | LAMBERT |
| 32 | BRUNDAGE 96 |
| 33 | SIMON |
| 34 | STEPHENS |
| 35 | TUBBS 06 |
| 36 | SKILES |
| 37 | GOETZE/SKILES |
| 38 | OR2040726 |
| 39 | OR2060395 |
| 40 | WB-528 |
| 41 | BZ6W02-616 |
| 42 | GEORGE |
| 43 | RJAMES |
| 44 | SALUTE |
| 45 | LEGION |
| 46 | AP LEGACY |
| 47 | CDC PTARMIGAN |
| 48 | KCF9001 |
| 49 | KCF9002 |
| 50 | KCF9003 |
| 51 | ID02-859 |
| 52 | ID00-475-2DH |
| 53 | ORCF-102 |
| 54 | ORCF-103 |
| 55 | AP 700 CL |
| 56 | DH99-55-2 |
| 57 | MADSEN/ROD |
| 58 | ELTAN/MADSEN |
| 59 | ELTAN/TUBBS06 |
| 60 | ROD/TUBBS06 |

RANDOMIZED PLOTS: 3 REPLICATIONS

| | |
|--|--------|
| | COMMON |
| | CLUB |

<http://variety.wsu.edu>

FOR MORE INFORMATION.....

STEPHEN GUY (509)335-5831
 JOHN KUEHNER (509)335-4470
 MARY LAUVER (509)335-4470
 Department of Crop and Soil Sciences
 PO Box 646420
 Pullman, WA 99164-6420