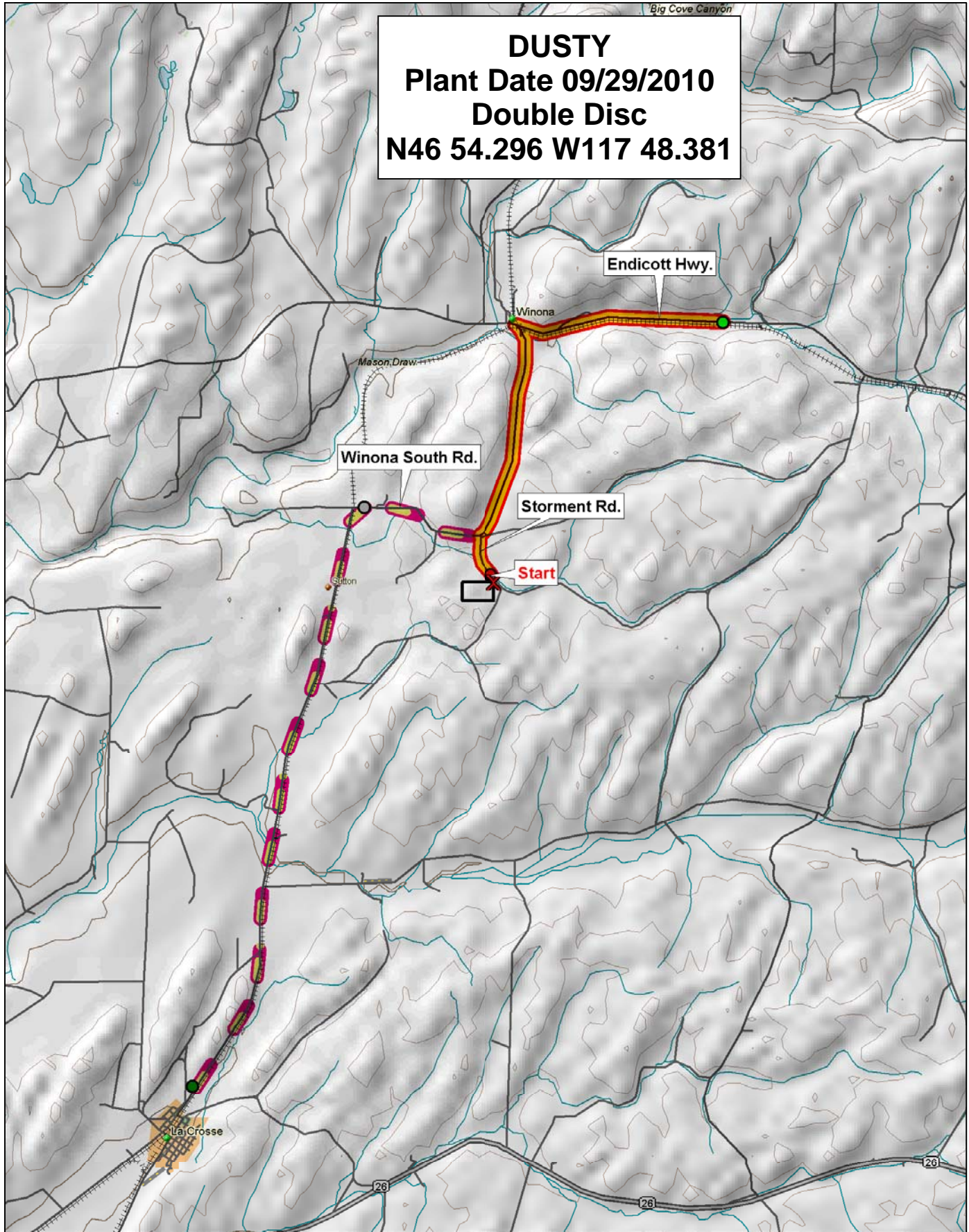


DUSTY
Plant Date 09/29/2010
Double Disc
N46 54.296 W117 48.381

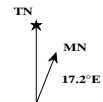
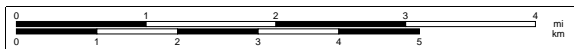


© 2001 DeLorme. Topo USA® 3.0

Zoom Level: 11-1 Datum: WGS84

Scale 1 : 93 750

1" = 1.48 mi



2011 WSU Winter Wheat Variety Trials

Range

Soft White Winter Variety Trial

| | | | | | | | | | | | | | | | | | | | | | | |
|-----|--------|----|----|----|----|----|----|----|----|----|----|----|----|----|----|----|----|----|----|----|----|--------|
| 9 | Border | 50 | 13 | 46 | 28 | 37 | 43 | 49 | 24 | 36 | 1 | 18 | 10 | 14 | 11 | 32 | 40 | 39 | 52 | 27 | 44 | Border |
| 8 | | 15 | 42 | 30 | 17 | 45 | 59 | 33 | 7 | 19 | 31 | 8 | 6 | 60 | 12 | 57 | 5 | 51 | 16 | 56 | 25 | |
| 7 | | 21 | 34 | 54 | 26 | 23 | 48 | 53 | 38 | 58 | 47 | 22 | 4 | 55 | 35 | 9 | 2 | 3 | 20 | 41 | 29 | |
| 6 | | 10 | 49 | 28 | 25 | 44 | 34 | 46 | 40 | 18 | 36 | 52 | 58 | 13 | 24 | 22 | 47 | 35 | 1 | 17 | 41 | |
| 5 | | 48 | 19 | 30 | 8 | 3 | 38 | 27 | 43 | 9 | 32 | 60 | 15 | 5 | 31 | 26 | 11 | 37 | 56 | 21 | 57 | |
| 4 | | 7 | 16 | 50 | 23 | 14 | 4 | 39 | 20 | 42 | 53 | 29 | 51 | 54 | 59 | 12 | 33 | 6 | 55 | 45 | 2 | |
| 3 | | 48 | 4 | 11 | 49 | 27 | 39 | 43 | 5 | 37 | 10 | 24 | 40 | 50 | 55 | 47 | 38 | 3 | 12 | 7 | 42 | |
| 2 | | 20 | 59 | 16 | 8 | 34 | 56 | 32 | 26 | 28 | 6 | 29 | 53 | 44 | 9 | 30 | 22 | 41 | 45 | 57 | 31 | |
| 1 | | 35 | 58 | 2 | 15 | 36 | 21 | 25 | 33 | 17 | 60 | 46 | 54 | 14 | 1 | 52 | 23 | 18 | 19 | 13 | 51 | |
| Row | | 1 | 2 | 3 | 4 | 5 | 6 | 7 | 8 | 9 | 10 | 11 | 12 | 13 | 14 | 15 | 16 | 17 | 18 | 19 | 20 | |

2011-SW Winter Wheat Trial

| Entry | Name | Class |
|-------|--------------|-------|
| 1 | Coda | WC |
| 2 | Chukar | WC |
| 3 | Cara | WC |
| 4 | Bruehl | WC |
| 5 | ARS970075-3C | WC |
| 6 | ARS970163-4C | WC |
| 7 | ARS97230-6C | WC |
| 8 | ARS98X402-1C | WC |
| 9 | Cara +25% | WC |
| 10 | Chukar +25% | WC |
| 11 | Madsen | SWW |
| 12 | Eltan | SWW |
| 13 | Rod | SWW |
| 14 | Finch | SWW |
| 15 | Masami | SWW |
| 16 | Xerpha | SWW |
| 17 | WA 8114 | SWW |
| 18 | WA 8116 | SWW |
| 19 | WA 8092 | SWW |
| 20 | WA 8094 | SWW |
| 21 | WA8134 | SWW |
| 22 | WA8135 | SWW |
| 23 | WA8136 | SWW |
| 24 | ARS960277L | SWW |
| 25 | ARS970161-3L | SWW |
| 26 | IDO663 | SWW |
| 27 | Bruneau | SWW |
| 28 | Bitterroot | SWW |
| 29 | Lambert | SWW |
| 30 | Brundage 96 | SWW |

| Entry | Name | Class |
|-------|----------------|-------|
| 31 | 96-16702A | SWW |
| 32 | Stephens | SWW |
| 33 | Tubbs 06 | SWW |
| 34 | Skiles | SWW |
| 35 | Goetze/Skiles | SWW |
| 36 | OR2040726 | SWW |
| 37 | OR2071628 | SWW |
| 38 | OR2070385 | SWW |
| 39 | WB-528 | SWW |
| 40 | BZ6W02-616 | SWW |
| 41 | Legion | SWW |
| 42 | AP Legacy | SWW |
| 43 | AP Badger | SWW |
| 44 | 03PN107#3 | SWW |
| 45 | 03PN108#21 | SWW |
| 46 | WA8142 | SWW |
| 47 | WA8143 | SWW |
| 48 | WA8144 | SWW |
| 49 | WA8145 | SWW |
| 50 | UICF-Brundage | SWWI |
| 51 | ID00-475-2DH | SWW |
| 52 | ORCF-102 | SWWI |
| 53 | ORCF-103 | SWWI |
| 54 | AP 700 CL | SWW |
| 55 | Sunrise | SRW |
| 56 | NSA06-2153A | SWW |
| 57 | Madsen/Rod | SWW |
| 58 | Rod/WB-528 | SWW |
| 59 | Eltan/Tubbs 06 | SWW |
| 60 | Rod/Tubbs 06 | SWW |