

# 2007-2008 CONNELL, LIND, RITZVILLE

Soft White Variety Trial

Hard Variety Trial

<b>EDWIN BORDER</b>	12	23	15	29	48	26	19	39	16	34	<b>EDWIN BORDER</b>	23	11	15	25	14	30	<b>EDWIN BORDER</b>
	46	20	42	38	7	14	9	49	6	36		12	18	20	28	26	8	
	31	32	24	33	4	40	27	28	30	11		1	22	7	6	27	4	
	13	37	22	1	3	47	18	2	43	35		3	16	10	2	29	21	
	44	8	45	17	41	21	10	25	50	5		24	13	5	17	19	9	
	35	38	4	22	29	6	3	42	15	24		23	11	5	4	10	19	
	50	23	13	5	37	47	43	20	49	41		7	16	26	13	24	21	
	17	28	11	44	19	40	32	2	48	12		3	15	8	30	22	25	
	1	34	46	30	16	36	26	27	45	21		28	2	27	12	18	20	
	7	9	31	25	18	14	8	39	10	33		29	14	9	6	1	17	
	13	28	5	2	38	22	42	25	14	21		24	6	14	22	1	8	
	12	35	26	50	27	46	3	37	17	4		4	19	13	10	28	5	
	10	1	11	23	48	32	47	6	29	39		23	26	2	30	16	7	
	16	30	45	31	18	15	7	41	20	34		15	27	9	18	29	3	
	49	44	9	24	36	8	43	33	19	40		25	12	21	20	17	11	
	41	42	43	44	45	46	47	48	49	50		25	26	27	28	29	30	
	40	39	38	37	36	35	34	33	32	31		24	23	22	21	20	19	
	21	22	23	24	25	26	27	28	29	30		13	14	15	16	17	18	
	20	19	18	17	16	15	14	13	12	11		12	11	10	9	8	7	
	1	2	3	4	5	6	7	8	9	10		1	2	3	4	5	6	

## 2007-2008 WSU Winter Wheat Varietal Trial

EDWIN BORDER	12	23	15	29	48	26	19	39	16	34	EDWIN BORDER
	46	20	42	38	7	14	9	49	6	36	
	31	32	24	33	4	40	27	28	30	11	
	13	37	22	1	3	47	18	2	43	35	
	44	8	45	17	41	21	10	25	50	5	
	35	38	4	22	29	6	3	42	15	24	
	50	23	13	5	37	47	43	20	49	41	
	17	28	11	44	19	40	32	2	48	12	
	1	34	46	30	16	36	26	27	45	21	
	7	9	31	25	18	14	8	39	10	33	
	13	28	5	2	38	22	42	25	14	21	
	12	35	26	50	27	46	3	37	17	4	
	10	1	11	23	48	32	47	6	29	39	
	16	30	45	31	18	15	7	41	20	34	
	49	44	9	24	36	8	43	33	19	40	
	41	42	43	44	45	46	47	48	49	50	
40	39	38	37	36	35	34	33	32	31		
21	22	23	24	25	26	27	28	29	30		
20	19	18	17	16	15	14	13	12	11		
1	2	3	4	5	6	7	8	9	10		

Planting Date	
Colton	25-Sep
Connell	5-Sep
Harrington	13-Sep
Lind	11-Sep
Ritzville	5-Sep
St. Andrews	6-Sep

	COMMON
	CLUB



#	ENTRY	#	ENTRY
1	CODA	26	ORH010085
2	CHUKAR	27	OR2050910
3	CARA	28	BU6W00-523
4	BRUEHL	29	WB 528
5	ARS970278-2	30	BU6W99-456
6	ARS970075-3	31	GEORGE
7	ARS970168-2C	32	RJAMES
8	MADSEN	33	CASHUP
9	ELTAN	34	CONCEPT
10	ROD	35	MJ-9
11	FINCH	36	SALUTE
12	MASAMI	37	99X1009-23
13	XERPHA	38	ORF2267-03
14	WA008063	39	ID990435
15	WA008064	40	ID02-859
16	WA008065	41	ORCF-101
17	WA008066	42	ORCF-102
18	ARS960277L	43	ORCF-103
19	LAMBERT	44	AP 700 CL
20	BRUNDAGE 96	45	BZ6WM02-1020
21	SIMON	46	BZ6WM04-1066
22	9222407A	47	MADSEN/ROD
23	9364901A	48	ELTAN/MADSEN
24	STEPHENS	49	ELTAN/TUBBS06
25	TUBBS 06	50	ROD/TUBBS06

Plots are randomized with 4 replications.  
There is a Edwin border strip on each side of the nursery.

## 2007-2008 WSU Hard Winter Wheat Varietal Trial

EDWIN BORDER	23	11	15	25	14	30	EDWIN BORDER
	12	18	20	28	26	8	
	1	22	7	6	27	4	
	3	16	10	2	29	21	
	24	13	5	17	19	9	
	23	11	5	4	10	19	
	7	16	26	13	24	21	
	3	15	8	30	22	25	
	28	2	27	12	18	20	
	29	14	9	6	1	17	
	24	6	14	22	1	8	
	4	19	13	10	28	5	
	23	26	2	30	16	7	
	15	27	9	18	29	3	
	25	12	21	20	17	11	
	25	26	27	28	29	30	
24	23	22	21	20	19		
13	14	15	16	17	18		
12	11	10	9	8	7		
1	2	3	4	5	6		

### Planting Date

Connell	5-Sep
Horse Heaven	15-Oct
Lind	11-Sep
Ritzville	5-Sep
St. Andrews	6-Sep



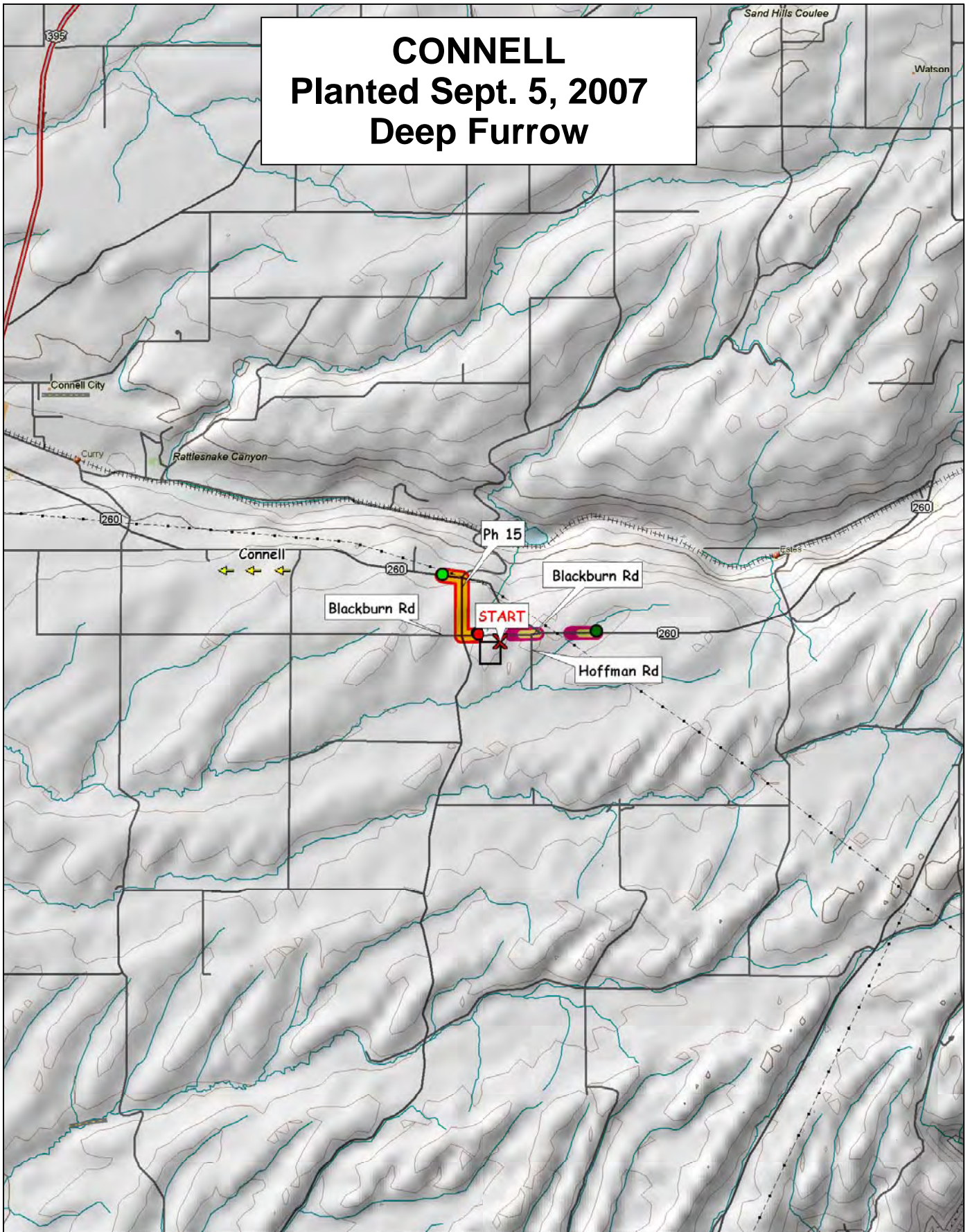
Plots are randomized with 4 replications. There is a Edwin border strip on each side of the nursery.

#	ENTRY
1	FINLEY
2	HATTON
3	BAUERMEISTER
4	WA008067
5	WA008022
6	WA008068
7	FARNUM
8	WA008023
9	WA008069
10	WA008060
11	WA008061
12	BOUNDARY
13	IDO621
14	ORN00B553
15	EDDY

#	ENTRY
16	BZ9W02-2032
17	ACS 52025
18	ML9W05-2506
19	AGRIPRO PALADIN
20	W98-344
21	TX97F4-33-1B
22	BC002-2
23	DECLO
24	DH99-37-100
25	MDM
26	WA008070
27	UI DARWIN
28	PALOMINO
29	NUDAKOTA
30	ELTAN

# CONNELL

Planted Sept. 5, 2007  
Deep Furrow



© 2001 DeLorme. Topo USA® 3.0

Zoom Level: 11-0 Datum: WGS84

Scale 1 : 100 000

1" = 1.58 mi

