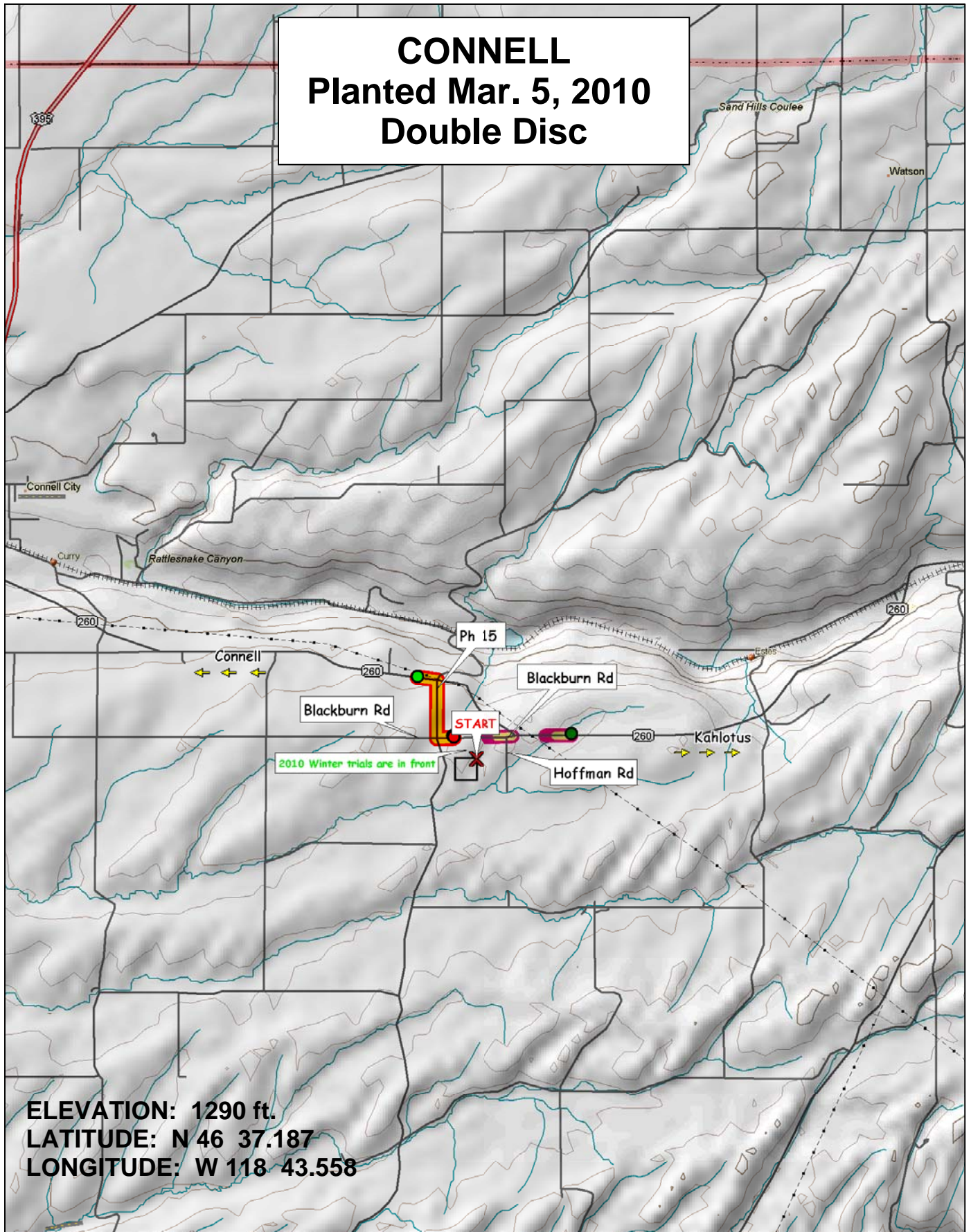


CONNELL Planted Mar. 5, 2010 Double Disc



ELEVATION: 1290 ft.
LATITUDE: N 46 37.187
LONGITUDE: W 118 43.558

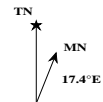


© 2001 DeLorme. Topo USA® 3.0

Zoom Level: 11-0 Datum: WGS84

Scale 1 : 100,000

1" = 158 mi



2010 WSU Spring Wheat Variety Trial

Range	Soft White Spring Wheat								Hard Spring Wheat								
9	WA008110	LOUISE	JD +25%	WHIT	ALPOWA	WA008105	WA008113	WA008106	Yecora Rojo Border	PATWIN	BUCK PRONTO	CLEAR WHITE	JEFFERSON	KELSE	WB-FUZION	LASSIK	MACON
8	IDO669	IDO599	NICK	ZAK	BABE	DIVA	WA008089	JD		WA008100	WESTBRED 926	HANK	WA008122	BULLSEYE	OR4990114	UI WINCHESTER	WA008074
7	WA008124	CATALDO	IDO671	WA008107	WAKANZ	EDEN	ALTURAS	EDEN +25%		IDO665	WA008123	SCARLET	BR7030	OTIS	TARA 2002	IDO667	HOLLIS
6	BABE	ALPOWA	WA008107	IDO599	EDEN +25%	WA008124	LOUISE	DIVA		WESTBRED 926	WA008074	JEFFERSON	KELSE	BR7030	MACON	BUCK PRONTO	OR4990114
5	WA008113	ZAK	CATALDO	WA008089	WA008106	IDO669	ALTURAS	WHIT		WA008122	HOLLIS	IDO665	LASSIK	SCARLET	TARA 2002	PATWIN	UI WINCHESTER
4	NICK	WA008105	WA008110	WAKANZ	JD +25%	EDEN	IDO671	JD		BULLSEYE	WA008100	OTIS	WA008123	WB-FUZION	IDO667	CLEAR WHITE	HANK
3	EDEN	WA008110	WA008113	BABE	WA008124	WHIT	NICK	WA008089		WESTBRED 926	WB-FUZION	BR7030	UI WINCHESTER	TARA 2002	JEFFERSON	MACON	WA008123
2	IDO669	IDO671	EDEN +25%	ALPOWA	LOUISE	IDO599	ALTURAS	CATALDO		IDO665	CLEAR WHITE	KELSE	OTIS	BUCK PRONTO	WA008074	WA008122	IDO667
1	WA008105	JD +25%	ZAK	DIVA	WA008107	WA008106	WAKANZ	JD		LASSIK	SCARLET	BULLSEYE	HANK	WA008100	OR4990114	PATWIN	HOLLIS
Row	1	2	3	4	5	6	7	8	9	10	11	12	13	14	15	16	17

*There is a Yecora Rojo border strip on each end of the trials and one between the soft white and hard spring wheat trials.

2010 CONNELL

YECORA ROJO	13	3	24	6	1	10	14	11	YECORA ROJO	24	14	23	6	4	12	13	17	YECORA ROJO	5-Passes	3-Passes	4-Passes	9-Passes	8-Passes	8-Passes	YECORA ROJO					
	19	18	5	2	7	8	9	22		19	10	11	20	15	16	7	5													
	15	17	20	12	4	21	16	23		8	21	1	22	18	3	9	2													
	7	1	12	18	23	15	3	8		10	5	6	4	22	17	14	16													
	14	2	17	9	11	19	16	6		20	2	8	13	1	3	24	7													
	5	10	13	4	24	21	20	22		15	19	18	21	12	9	23	11													
	21	13	14	7	15	6	5	9		10	12	22	7	3	6	17	21													
	19	20	23	1	3	18	16	17		8	23	4	18	14	5	20	9													
	10	24	2	8	12	11	4	22		13	1	15	11	19	16	24	2													
SWH Spring VT								Hard Spring VT								State HRS		State HWS		State Club		State SWS			WA8100 MIAG			OTIS MIAG		

2010 WSU Spring WHEAT Varietal Trial

BARLEY or YECORA ROJO									
1	10	24	2	8	12	11	4	22	
2	19	20	23	1	3	18	16	17	
3	21	13	14	7	15	6	5	9	
4	5	10	13	4	24	21	20	22	
5	14	2	17	9	11	19	16	6	
6	7	1	12	18	23	15	3	8	
7	15	17	20	12	4	21	16	23	
8	19	18	5	2	7	8	9	22	
9	13	3	24	6	1	10	14	11	
10	2	24	2	8	12	11	4	22	

YECORA ROJO									
1	13	8	23	4	18	14	5	20	9
2	1	15	11	19	10	11	20	15	16
3	8	23	4	18	14	5	20	9	
4	10	12	22	7	3	6	17	21	
5	15	19	18	21	12	9	23	11	
6	20	2	8	13	1	3	24	7	
7	10	5	6	4	22	17	14	16	
8	8	21	1	22	18	3	9	2	
9	19	10	11	20	15	16	7	5	
10	24	14	23	6	4	12	13	17	

YECORA ROJO									
1	13	8	23	4	18	14	5	20	9
2	1	15	11	19	10	11	20	15	16
3	8	23	4	18	14	5	20	9	
4	10	12	22	7	3	6	17	21	
5	15	19	18	21	12	9	23	11	
6	20	2	8	13	1	3	24	7	
7	10	5	6	4	22	17	14	16	
8	8	21	1	22	18	3	9	2	
9	19	10	11	20	15	16	7	5	
10	24	14	23	6	4	12	13	17	

Planting Dates

Almira	7-Apr
Bickleton	31-Mar
Colfax	15-Apr
Connell	5-Mar
Dayton	19-Mar
Endicott	25-Mar
Farmington	24-Mar
H. Heaven	4-Mar
Lamont	1-Apr
Lind	9-Mar
Mayview	16-Apr
Moses Lake	24-Mar
Pullman	15-Apr
Reardan	26-Mar
St. John	1-Apr
Walla Walla	5-Mar

SOFT WHITE

HARD RED/HARD WHITE

SOFT WHITE

1	ALPOWA
2	ZAK
3	LOUISE
4	WAKANZ
5	NICK
6	WHIT
7	BABE
8	DIVA
9	WA008089
10	WA008105
11	WA008106
12	WA008107

13	WA008110
14	WA008113
15	WA008124
16	ALTURAS
17	CATALDO
18	IDO599
19	IDO669
20	IDO671
21	EDEN
22	JD
23	EDEN +25
24	JD +25

HARD RED/HARD WHITE

1	SCARLET
2	HOLLIS
3	TARA 2002
4	KELSE
5	WA008074
6	JEFFERSON
7	UI WINCHESTER
8	IDO665
9	IDO667
10	WESTBRED 926
11	HANK
12	WB-FUZION

13	LASSIK
14	BUCK PRONTO
15	BULLSEYE
16	OR4990114
17	MACON
18	OTIS
19	WA008100
20	WA008122
21	WA008123
22	BR7030
23	CLEAR WHITE
24	PATWIN

FOR MORE INFORMATION.....

STEPHEN GUY (509)335-5831

JOHN KUEHNER (509)335-4470

MARY LAUVER (509)-335-4470

Department of Crop and Soil Sciences

PO Box 646420

Pullman, WA 99164-6420

	SOFT WHITE
	CLUB
	HARD WHITE
	HARD RED

RANDOMIZED PLOTS:

3 REPLICATIONS