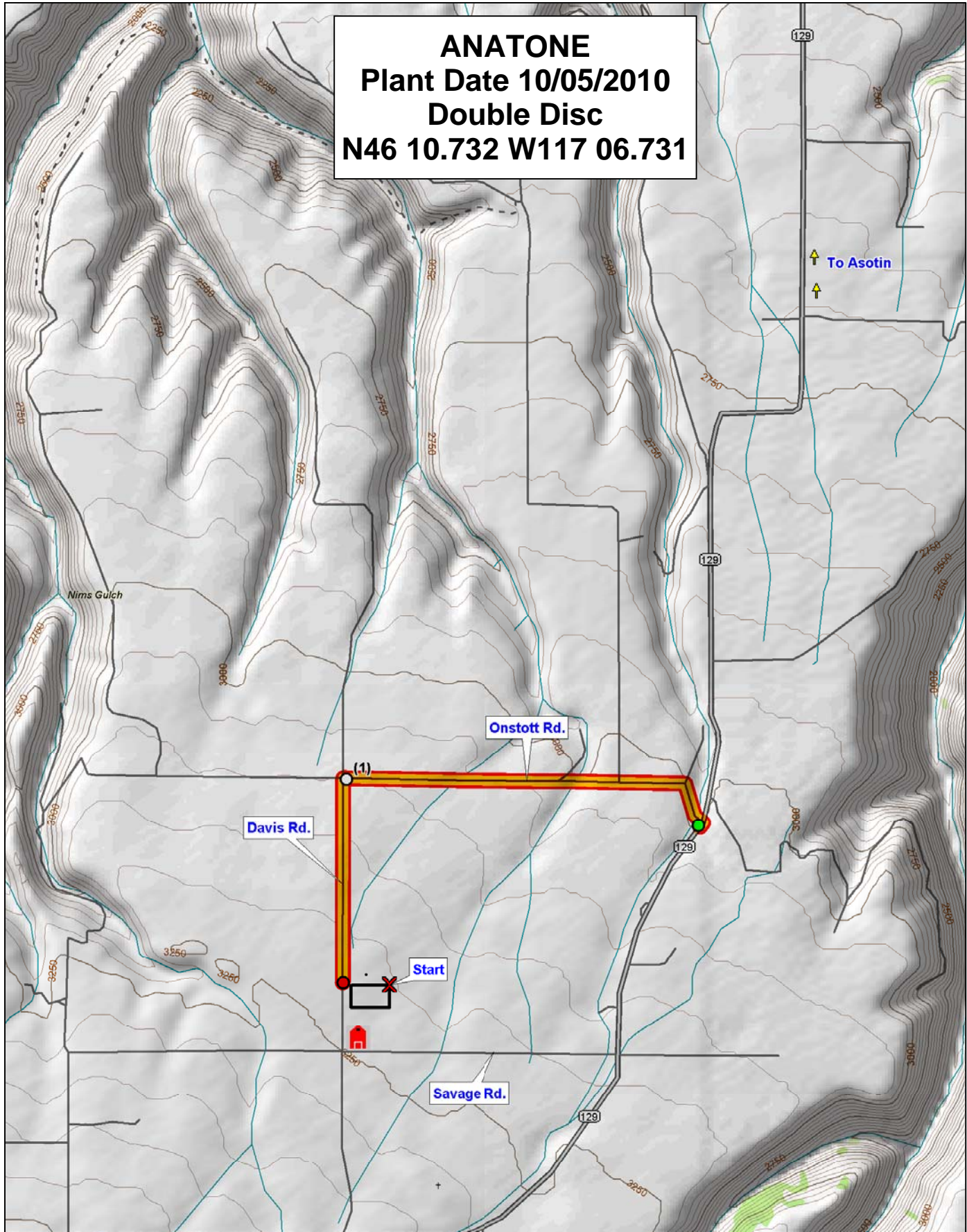


**ANATONE**  
**Plant Date 10/05/2010**  
**Double Disc**  
**N46 10.732 W117 06.731**

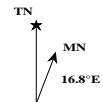
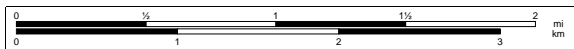


© 2001 DeLorme. Topo USA® 3.0

Zoom Level: 12-1 Datum: WGS84

Scale 1 : 46 875

1" = 3 006.25 ft



## 2011 WSU Winter Wheat Variety Trials

Range

### Soft White Winter Variety Trial

|   |        |     |    |    |    |    |    |    |    |    |    |    |    |    |    |    |    |    |    |    |    |    |  |
|---|--------|-----|----|----|----|----|----|----|----|----|----|----|----|----|----|----|----|----|----|----|----|----|--|
|   |        | 50  | 13 | 46 | 28 | 37 | 43 | 49 | 24 | 36 | 1  | 18 | 10 | 14 | 11 | 32 | 40 | 39 | 52 | 27 | 44 |    |  |
| 9 | Border | 15  | 42 | 30 | 17 | 45 | 59 | 33 | 7  | 19 | 31 | 8  | 6  | 60 | 12 | 57 | 5  | 51 | 16 | 56 | 25 |    |  |
| 8 |        | 21  | 34 | 54 | 26 | 23 | 48 | 53 | 38 | 58 | 47 | 22 | 4  | 55 | 35 | 9  | 2  | 3  | 20 | 41 | 29 |    |  |
| 7 |        | 10  | 49 | 28 | 25 | 44 | 34 | 46 | 40 | 18 | 36 | 52 | 58 | 13 | 24 | 22 | 47 | 35 | 1  | 17 | 41 |    |  |
| 6 |        | 48  | 19 | 30 | 8  | 3  | 38 | 27 | 43 | 9  | 32 | 60 | 15 | 5  | 31 | 26 | 11 | 37 | 56 | 21 | 57 |    |  |
| 5 |        | 7   | 16 | 50 | 23 | 14 | 4  | 39 | 20 | 42 | 53 | 29 | 51 | 54 | 59 | 12 | 33 | 6  | 55 | 45 | 2  |    |  |
| 4 |        | 48  | 4  | 11 | 49 | 27 | 39 | 43 | 5  | 37 | 10 | 24 | 40 | 50 | 55 | 47 | 38 | 3  | 12 | 7  | 42 |    |  |
| 3 |        | 20  | 59 | 16 | 8  | 34 | 56 | 32 | 26 | 28 | 6  | 29 | 53 | 44 | 9  | 30 | 22 | 41 | 45 | 57 | 31 |    |  |
| 2 |        | 35  | 58 | 2  | 15 | 36 | 21 | 25 | 33 | 17 | 60 | 46 | 54 | 14 | 1  | 52 | 23 | 18 | 19 | 13 | 51 |    |  |
| 1 |        |     | 1  | 2  | 3  | 4  | 5  | 6  | 7  | 8  | 9  | 10 | 11 | 12 | 13 | 14 | 15 | 16 | 17 | 18 | 19 | 20 |  |
|   |        | Row | 1  | 2  | 3  | 4  | 5  | 6  | 7  | 8  | 9  | 10 | 11 | 12 | 13 | 14 | 15 | 16 | 17 | 18 | 19 | 20 |  |

## 2011-SW Winter Wheat Trial

| Entry | Name         | Class |
|-------|--------------|-------|
| 1     | Coda         | WC    |
| 2     | Chukar       | WC    |
| 3     | Cara         | WC    |
| 4     | Bruehl       | WC    |
| 5     | ARS970075-3C | WC    |
| 6     | ARS970163-4C | WC    |
| 7     | ARS97230-6C  | WC    |
| 8     | ARS98X402-1C | WC    |
| 9     | Cara +25%    | WC    |
| 10    | Chukar +25%  | WC    |
| 11    | Madsen       | SWW   |
| 12    | Eltan        | SWW   |
| 13    | Rod          | SWW   |
| 14    | Finch        | SWW   |
| 15    | Masami       | SWW   |
| 16    | Xerpha       | SWW   |
| 17    | WA 8114      | SWW   |
| 18    | WA 8116      | SWW   |
| 19    | WA 8092      | SWW   |
| 20    | WA 8094      | SWW   |
| 21    | WA8134       | SWW   |
| 22    | WA8135       | SWW   |
| 23    | WA8136       | SWW   |
| 24    | ARS960277L   | SWW   |
| 25    | ARS970161-3L | SWW   |
| 26    | IDO663       | SWW   |
| 27    | Bruneau      | SWW   |
| 28    | Bitterroot   | SWW   |
| 29    | Lambert      | SWW   |
| 30    | Brundage 96  | SWW   |

| Entry | Name           | Class |
|-------|----------------|-------|
| 31    | 96-16702A      | SWW   |
| 32    | Stephens       | SWW   |
| 33    | Tubbs 06       | SWW   |
| 34    | Skiles         | SWW   |
| 35    | Goetze/Skiles  | SWW   |
| 36    | OR2040726      | SWW   |
| 37    | OR2071628      | SWW   |
| 38    | OR2070385      | SWW   |
| 39    | WB-528         | SWW   |
| 40    | BZ6W02-616     | SWW   |
| 41    | Legion         | SWW   |
| 42    | AP Legacy      | SWW   |
| 43    | AP Badger      | SWW   |
| 44    | 03PN107#3      | SWW   |
| 45    | 03PN108#21     | SWW   |
| 46    | WA8142         | SWW   |
| 47    | WA8143         | SWW   |
| 48    | WA8144         | SWW   |
| 49    | WA8145         | SWW   |
| 50    | UICF-Brundage  | SWWI  |
| 51    | ID00-475-2DH   | SWW   |
| 52    | ORCF-102       | SWWI  |
| 53    | ORCF-103       | SWWI  |
| 54    | AP 700 CL      | SWW   |
| 55    | Sunrise        | SRW   |
| 56    | NSA06-2153A    | SWW   |
| 57    | Madsen/Rod     | SWW   |
| 58    | Rod/WB-528     | SWW   |
| 59    | Eltan/Tubbs 06 | SWW   |
| 60    | Rod/Tubbs 06   | SWW   |