

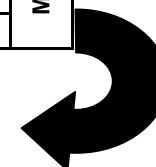
2007-2008 Almira, Dayton, Lamont, Pullman, Reardan, Walla Walla

Soft White Variety Trial

MADSEN BORDER	12	23	15	29	48	26	19	39	16	34	36	6	49	9	14	7	38	42	20	46	31	32	24	33	4	MADSEN BORDER
	5	50	25	10	21	41	17	45	8	44	13	37	22	1	3	47	18	2	43	35	11	30	28	27	40	
	24	15	42	3	6	29	22	4	38	35	50	23	13	5	37	47	43	20	49	41	12	48	2	32	40	
	7	9	31	25	18	14	8	39	10	33	21	45	27	26	36	16	30	46	34	1	17	28	11	44	19	
	13	28	5	2	38	22	42	25	14	21	4	17	37	3	46	27	50	26	35	12	10	1	11	23	48	
	40	19	33	43	8	36	24	9	44	49	16	30	45	31	18	15	7	41	20	34	39	29	6	47	32	
	50	49	48	47	46	45	44	43	42	41	40	39	38	37	36	35	34	33	32	31	30	29	28	27	26	
	1	2	3	4	5	6	7	8	9	10	11	12	13	14	15	16	17	18	19	20	21	22	23	24	25	

Hard Variety Trial

23	11	15	25	14	30	8	26	28	20	18	12	1	22	7	MADSEN BORDER
9	19	17	5	13	24	3	16	10	2	29	21	4	27	6	
19	10	4	5	11	23	7	16	26	13	24	21	25	22	30	
29	14	9	6	1	17	20	18	12	27	2	28	3	15	8	
24	6	14	22	1	8	5	28	10	13	19	4	23	26	2	
11	17	20	21	12	25	15	27	9	18	29	3	7	16	30	
30	29	28	27	26	25	24	23	22	21	20	19	18	17	16	
1	2	3	4	5	6	7	8	9	10	11	12	13	14	15	



2007-2008 WSU Winter Wheat Varietal Trial

Madsen Border												
1	50	40	13	7	24	5	12	23	15	29	48	26
2	49	19	28	9	15	50	25	10	21	41	17	45
3	48	33	5	31	42	25	10	21	41	17	45	8
4	47	43	2	25	3	25	10	21	41	17	45	8
5	46	43	8	18	6	29	22	4	38	35	50	23
6	45	36	38	14	29	22	4	38	35	50	23	13
7	44	24	22	14	22	4	38	35	50	23	13	5
8	43	9	42	8	39	10	33	21	45	27	26	36
9	42	44	25	9	10	33	21	45	27	26	36	16
10	41	49	14	4	33	21	45	27	26	36	16	30
11	40	16	41	17	37	3	46	27	50	26	35	12
12	39	30	39	3	37	47	43	20	49	41	12	48
13	38	45	31	46	30	46	34	1	17	28	11	44
14	37	18	15	27	30	46	34	1	17	28	11	44
15	36	7	7	50	26	35	12	10	1	11	23	48
16	35	47	41	20	34	39	29	6	47	32	40	4
17	34	18	19	20	34	39	29	6	47	32	40	4
18	33	32	31	30	29	28	27	26	32	40	4	4
19	32	33	32	31	30	29	28	27	26	32	40	4
20	31	30	29	28	27	26	32	40	4	4	4	4
21	30	29	28	27	26	32	40	4	4	4	4	4
22	29	28	27	26	32	40	4	4	4	4	4	4
23	28	27	26	32	40	4	4	4	4	4	4	4
24	27	26	32	40	4	4	4	4	4	4	4	4
25	26	32	40	4	4	4	4	4	4	4	4	4
Madsen Border												

Planting Date	
Almira	7-Sep
Anatone	25-Sep
Bickleton	8-Oct
Creston	14-Sep
Dayton	26-Sep
Dusty	25-Sep
Fairfield	28-Sep
Farmington	5-Oct
Lamont	12-Sep
Mayview	9-Oct
Moses Lake	10-Oct
Pullman	27-Sep
Reardan	24-Sep
St. John	24-Sep
Walla Walla	2-Oct



Plots are randomized with 4 replications.

There is a Madsen border strip on each side of the nursery.

<http://variety.wsu.edu>

#	ENTRY	#	ENTRY
1	CODA	26	ORH010085
2	CHUKAR	27	OR2050910
3	CARA	28	BU6W00-523
4	BRUEHL	29	WB 528
5	ARS970278-2	30	BU6W99-456
6	ARS970075-3	31	GEORGE
7	ARS970168-2C	32	RJAMES
8	MADSEN	33	CASHUP
9	ELTAN	34	CONCEPT
10	ROD	35	MJ-9
11	FINCH	36	SALUTE
12	MASAMI	37	99X1009-23
13	XERPHA	38	ORF2267-03
14	WA008063	39	ID990435
15	WA008064	40	ID02-859
16	WA008065	41	ORCF-101
17	WA008066	42	ORCF-102
18	ARS960277L	43	ORCF-103
19	LAMBERT	44	AP 700 CL
20	BRUNDAGE 96	45	BZ6WM02-1020
21	SIMON	46	BZ6WM04-1066
22	9222407A	47	MADSEN/ROD
23	9364901A	48	ELTAN/MADSEN
24	STEPHENS	49	ELTAN/TUBBS06
25	TUBBS 06	50	ROD/TUBBS06

FOR MORE INFORMATION.....

JOHN BURNS (509)335-5831/595-5379
 JOHN KUEHNER (509)335-4470/595-0013
 Department of Crop and Soil Sciences
 PO Box 646420
 Pullman, WA 99164-6420

2007-2008 WSU Hard Winter Wheat Varietal Trial

Madsen Border							
1	30	11	24	29	19	9	23
2	29	17	6	14	10	19	11
3	28	20	14	9	4	17	15
4	27	21	14	22	6	5	25
5	26	12	1	1	11	13	14
6	25	25	8	17	23	24	30
7	24	15	5	20	7	3	8
8	23	27	28	18	16	16	26
9	22	9	10	12	26	10	28
10	21	18	13	27	13	2	20
11	20	29	19	2	24	21	18
12	19	3	4	28	21	21	12
13	18	7	23	3	25	4	1
14	17	16	26	15	22	4	22
15	16	30	2	8	30	6	7
Madsen Border							

Planting Date	
Almira	7-Sep
Dayton	26-Sep
Lamont	12-Sep
Pullman	27-Sep
Reardan	24-Sep
Walla Walla	2-Oct

	RED
	WHITE

Plots are randomized with 4 replications. There is a Madsen border strip on each side of the nursery.

<http://variety.wsu.edu>

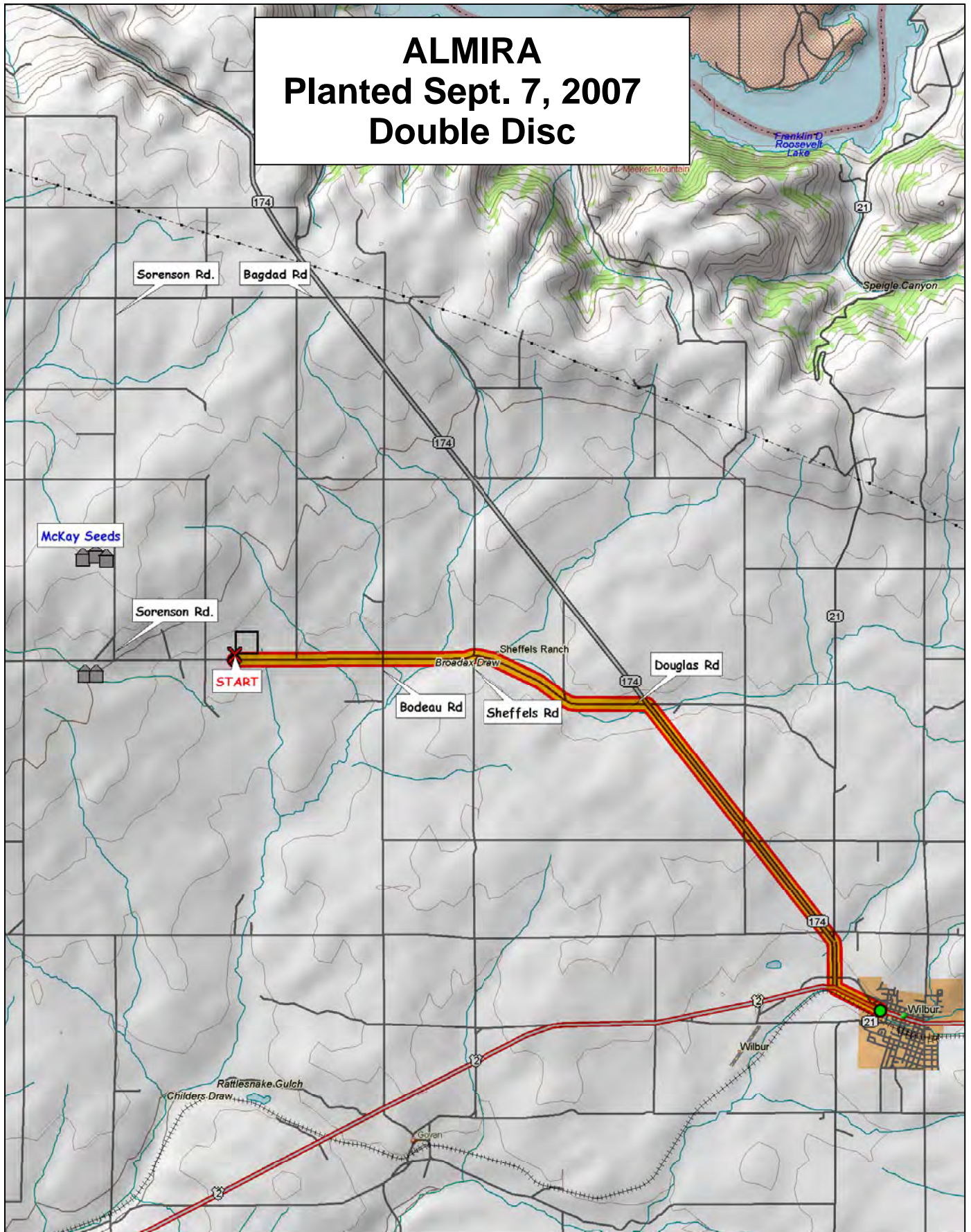
#	ENTRY
1	FINLEY
2	HATTON
3	BAUERMEISTER
4	WA008067
5	WA008022
6	WA008068
7	FARNUM
8	WA008023
9	WA008069
10	WA008060
11	WA008061
12	BOUNDARY
13	IDO621
14	ORN00B553
15	EDDY

#	ENTRY
16	BZ9W02-2032
17	ACS 52025
18	ML9W05-2506
19	AGRIPRO PALADIN
20	W98-344
21	TX97F4-33-1B
22	BC002-2
23	DECLO
24	DH99-37-100
25	MDM
26	WA008070
27	UI DARWIN
28	PALOMINO
29	NUDAKOTA
30	ELTAN

FOR MORE INFORMATION.....

JOHN BURNS (509)335-5831/595-5379
 JOHN KUEHNER (509)335-4470/595-0013
 Department of Crop and Soil Sciences
 PO Box 646420
 Pullman, WA 99164-6420

ALMIRA Planted Sept. 7, 2007 Double Disc



© 2001 DeLorme. Topo USA® 3.0

Zoom Level: 11-1 Datum: WGS84

Scale 1 : 93 750

1" = 1.48 mi

