

**Locations: Almira, Bickleton, Dayton, Farmington, Lamont, Mayview,
Reardan, St. John, Walla Walla**

Spring Barley

Soft White Spring Wheat

Hard Spring Wheat

YECORA ROJO	9	36	21	30	6	5	24	34	4	11	12	3	19	20	6	18	22	13	2	7	YECORA ROJO	14	22	2	1	16	7	15	19	18	13
	29	27	23	13	1	22	7	14	10	18	20	25	11	10	12	21	14	8	15	24		27	26	28	20	3	9	5	21	12	29
	33	2	32	35	16	26	31	8	28	15	19	17	5	17	16	4	23	1	3	9		10	25	23	24	17	11	8	30	6	4
	22	23	35	10	29	21	2	11	20	17	28	7	11	4	18	13	15	6	3	10		3	14	12	23	13	22	28	9	8	24
	12	1	5	31	32	24	25	8	34	27	15	9	12	7	19	16	2	8	9	17		17	26	18	5	30	20	15	16	29	4
	14	19	4	6	33	18	30	3	16	13	36	26	21	23	20	24	1	22	14	5		21	19	2	25	6	10	11	27	1	7
	32	5	18	17	9	23	28	34	20	24	10	19	1	21	17	18	19	24	9	4		25	16	7	12	8	11	2	18	28	23
	14	29	36	31	33	4	7	15	8	30	11	26	14	3	11	7	23	13	5	10		5	4	13	24	27	17	19	1	29	3
	35	27	1	21	16	13	3	25	2	6	22	12	12	8	6	22	2	20	16	15		9	26	14	6	15	10	21	22	20	30

2009 WSU Spring **WHEAT** Varietal Trial

BARLEY or YECORA ROJO									
1	12	8	6	22	2	20	16	15	10
2	14	3	11	7	23	18	19	13	4
3	1	21	17	18	19	24	9	4	10
4	21	23	20	24	1	22	14	5	5
5	12	7	19	16	2	8	9	17	17
6	11	4	18	13	15	6	3	10	10
7	5	17	16	4	23	1	3	9	9
8	11	10	12	21	14	8	15	24	24
9	19	20	6	18	22	13	2	7	7

SOFT WHITE

YECORA ROJO									
1	9	26	14	6	15	10	21	22	30
2	5	4	13	24	27	17	19	1	29
3	25	16	7	12	8	11	2	18	28
4	21	19	2	25	6	10	11	27	1
5	17	26	18	5	30	20	15	16	29
6	3	14	12	23	13	22	28	9	8
7	10	25	23	24	17	11	8	30	6
8	27	26	28	20	3	9	5	21	12
9	14	22	2	1	16	7	15	19	18

HARD RED/HARD WHITE

YECORA ROJO									
1	35	27	1	21	16	13	3	25	2
2	14	29	36	31	33	4	7	15	8
3	32	5	18	17	9	23	28	34	20
4	14	19	4	6	33	18	30	3	16
5	12	1	5	31	32	24	25	8	34
6	22	23	35	10	29	21	2	11	20
7	33	2	32	35	16	26	31	8	28
8	29	27	23	13	1	22	7	14	10
9	9	36	21	30	6	5	24	34	4

FOR MORE INFORMATION.....

STEPHEN GUY (509)335-5831
 JOHN KUEHNER (509)335-4470
 MARY LAUVER (509)335-4470
 Department of Crop and Soil Sciences
 PO Box 646420
 Pullman, WA 99164-6420

Planting Dates

Almira	20-Apr
Bickleton	21-Apr
Connell	18-Mar
Dayton	16-Apr
Endicott	7-Apr
Farmington	4-May
H. Heaven	20-Mar
Lamont	15-Apr
Lind	19-Mar
Mayview	24-Apr
Moses Lake	27-Mar
Pullman	21-Apr
Rearidan	17-Apr
St. John	20-Apr
Walla Walla	16-Apr

SOFT WHITE
CLUB
HARD WHITE
HARD RED

RANDOMIZED PLOTS:
3 REPLICATIONS

SOFT WHITE

1	ALPOWA	13	WA008089
2	ZAK	14	WA008058
3	LOUISE	15	WA008059
4	WAKANZ	16	WA008104
5	NICK	17	WA008112
6	BZ604-002	18	WA008106
7	WHIT	19	ALTURAS
8	BABE	20	CATALDO
9	WA008039HF	21	EDEN
10	WA008041	22	JD
11	WA008108	23	EDEN (HSR)
12	WA008090	24	JD (HSR)

HARD RED/HARD WHITE

1	SCARLET	16	NPBHR70
2	HOLLIS	17	LASSIK
3	TARA 2002	18	BUCK PRONTO
4	KELSE	19	BULLSEYE
5	WA008027	20	OR4990114
6	WA008072	21	MACON
7	WA008074	22	OTIS
8	WA008075	23	WA008078
9	WA008076	24	WA008079
10	JEFFERSON	25	WA008100
11	UI WINCHESTER	26	WA008101
12	WESTBRED 926	27	BLANCA GRANDE
13	HANK	28	RSI10348W
14	JEDD	29	CLEAR WHITE
15	VOLT	30	BZ903-445WP

2009 WSU Spring **BARLEY** Varietal Trial

YECORA ROJO									
1	35	27	1	21	16	13	3	25	2
2	14	29	36	31	33	4	7	15	8
3	32	5	18	17	9	23	28	34	20
4	14	19	4	6	33	18	30	3	16
5	12	1	5	31	32	24	25	8	34
6	22	23	35	10	29	21	2	11	20
7	33	2	32	35	16	26	31	8	28
8	29	27	23	13	1	22	7	14	10
9	9	36	21	30	6	5	24	34	4

SW SPRING WHEAT or YECORA ROJO

Planting Dates

Almira	20-Apr
Bickleton	21-Apr
Colfax	4-May
Dayton	16-Apr
Farmington	4-May
Lamont	15-Apr
Mayview	24-Apr
Pullman	21-Apr
Rearidan	17-Apr
St. John	20-Apr
Walla Walla	16-Apr

RANDOMIZED PLOTS:
3 REPLICATIONS

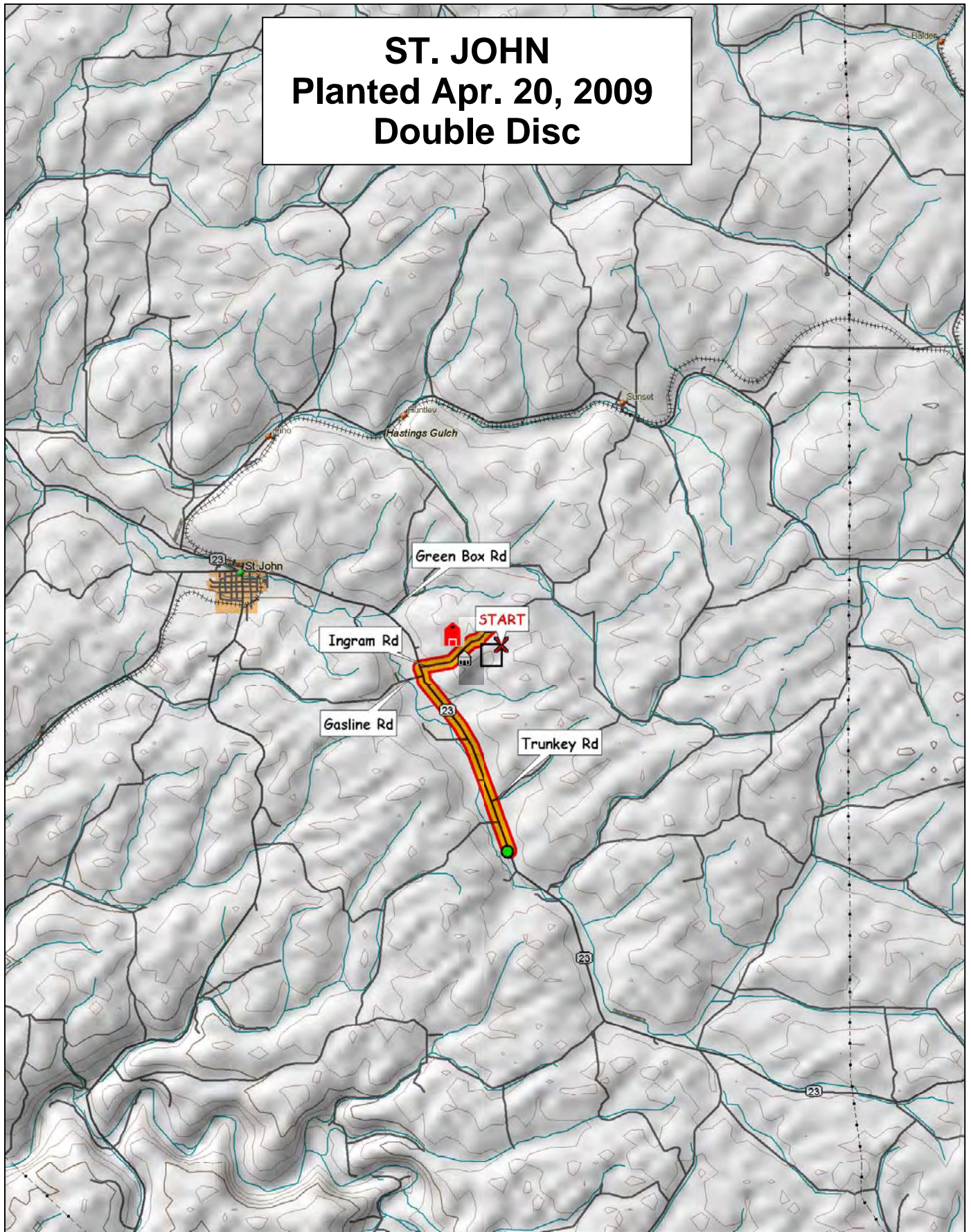
2-ROW
6-ROW
HULLESS

BARLEY

1	BOB	19	2004NZ052
2	RADIANT	20	2004NZ160
3	BARONESSE	21	05WA-316.K
4	CHAMPION	22	05WA-328.8
5	RWA 1758	23	05WA-329.49
6	KENT	24	05WA-325.18
7	HARRINGTON	25	05WA-357.14
8	AC METCALFE	26	05WA-316.99
9	SPAULDING	27	05WA-360.24
10	LEGACY	28	04WNZ-286
11	CDC COPELAND	29	04WA-113.22
12	LENETAH	30	04WA-122.9
13	HAXBY	31	04WNZ-124
14	CLEARWATER	32	04WA-102.49
15	TETONIA	33	03WA-204.22H
16	PINNACLE	34	01WA-13860.5
17	2004NZ170	35	WA 9820-98
18	2004NZ223	36	MERESSE

ST. JOHN

Planted Apr. 20, 2009
Double Disc



© 2001 DeLorme. Topo USA® 3.0

Zoom Level: 11-0 Datum: WGS84

Scale 1 : 100,000

1" = 158 mi

