

2009 LIND

YECORA ROJO	19	20	6	18	22	13	2	7	YECORA ROJO	14	22	2	1	16	7	15	19	18	13	YECORA ROJO
	11	10	12	21	14	8	15	24		27	26	28	20	3	9	5	21	12	29	
	5	17	16	4	23	1	3	9		10	25	23	24	17	11	8	30	6	4	
	11	4	18	13	15	6	3	10		3	14	12	23	13	22	28	9	8	24	
	12	7	19	16	2	8	9	17		17	26	18	5	30	20	15	16	29	4	
	21	23	20	24	1	22	14	5		21	19	2	25	6	10	11	27	1	7	
	1	21	17	18	19	24	9	4		25	16	7	12	8	11	2	18	28	23	
	14	3	11	7	23	13	5	10		5	4	13	24	27	17	19	1	29	3	
	12	8	6	22	2	20	16	15		9	26	14	6	15	10	21	22	20	30	

SWH Spring VT

Hard Spring VT



Spring Wheat Breeding Trials

This map includes only the portion of the nursery that contains the Variety Testing Trials.
 These trials are planted first in the nursery.

2009 WSU Spring WHEAT Varietal Trial

BARLEY or YECORA ROJO									
1	12	1	21	12	11	5	11	19	19
2	14	3	21	23	7	4	17	10	20
3	8	11	17	20	19	18	16	6	18
4	22	7	18	24	16	13	4	21	14
5	2	23	19	1	2	15	23	22	18
6	20	13	24	22	8	6	1	13	8
7	16	5	9	14	9	3	3	2	15
8	15	10	4	5	17	10	9	7	24
YECORA ROJO									
1	9	5	25	21	17	3	10	14	27
2	26	4	16	19	26	14	25	22	26
3	14	13	7	2	18	12	23	2	28
4	6	24	12	25	5	23	24	1	20
5	15	27	8	6	30	13	17	7	3
6	10	17	11	10	20	22	11	9	9
7	21	19	2	11	15	28	8	15	5
8	22	1	18	27	16	9	30	21	21
9	20	29	23	7	29	8	6	19	12
10	30	3	23	7	4	24	4	18	29
YECORA ROJO									

Planting Dates	
Almira	20-Apr
Bickleton	21-Apr
Connell	18-Mar
Dayton	16-Apr
Endicott	7-Apr
Farmington	4-May
H. Heaven	20-Mar
Lamont	15-Apr
Lind	19-Mar
Mayview	24-Apr
Moses Lake	27-Mar
Pullman	21-Apr
Reardan	17-Apr
St. John	20-Apr
Walla Walla	16-Apr

SOFT WHITE
CLUB
HARD WHITE
HARD RED

RANDOMIZED PLOTS:
3 REPLICATIONS

SOFT WHITE
HARD RED/HARD WHITE

SOFT WHITE

1	ALPOWA
2	ZAK
3	LOUISE
4	WAKANZ
5	NICK
6	BZ604-002
7	WHIT
8	BABE
9	WA008039HF
10	WA008041
11	WA008108
12	WA008090

13	WA008089
14	WA008058
15	WA008059
16	WA008104
17	WA008112
18	WA008106
19	ALTURAS
20	CATALDO
21	EDEN
22	JD
23	EDEN (HSR)
24	JD (HSR)

HARD RED/HARD WHITE

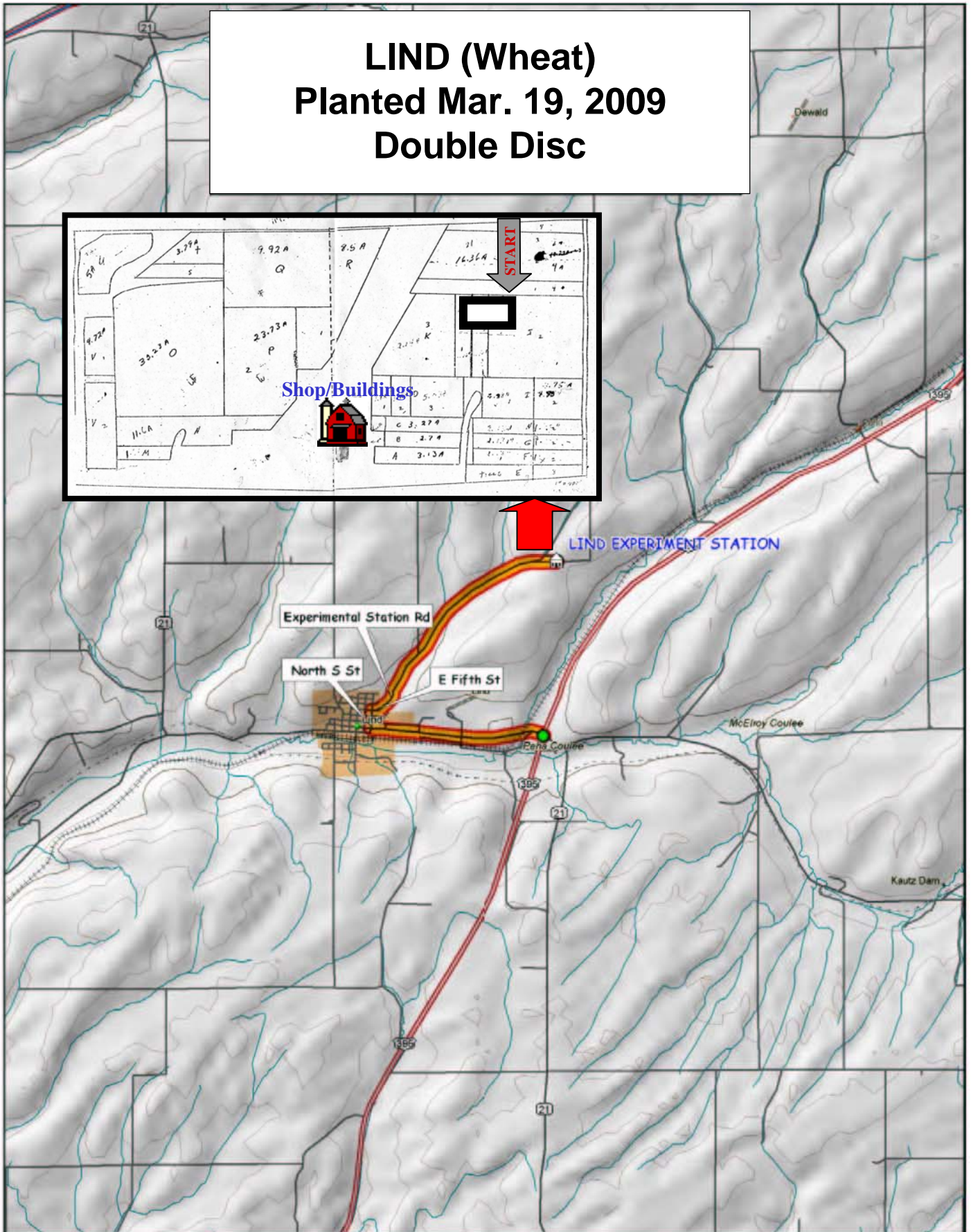
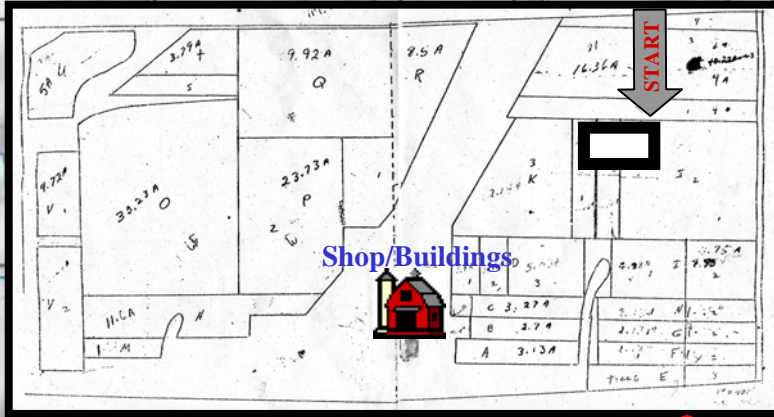
1	SCARLET
2	HOLLIS
3	TARA 2002
4	KELSE
5	WA008027
6	WA008072
7	WA008074
8	WA008075
9	WA008076
10	JEFFERSON
11	UI WINCHESTER
12	WESTBRED 926
13	HANK
14	JEDD
15	VOLT

16	NPBHR70
17	LASSIK
18	BUCK PRONTO
19	BULLSEYE
20	OR4990114
21	MACON
22	OTIS
23	WA008078
24	WA008079
25	WA008100
26	WA008101
27	BLANCA GRANDE
28	RSI10348W
29	CLEAR WHITE
30	BZ903-445WP

FOR MORE INFORMATION.....

STEPHEN GUY (509)335-5831
 JOHN KUEHNER (509)335-4470
 MARY LAUVER (509)335-4470
 Department of Crop and Soil Sciences
 PO Box 646420
 Pullman, WA 99164-6420

LIND (Wheat) Planted Mar. 19, 2009 Double Disc



© 2001 DeLorme. Topo USA® 3.0

Zoom Level: 11-0 Datum: WGS84

Scale 1 : 100 000

1" = 2 500'

