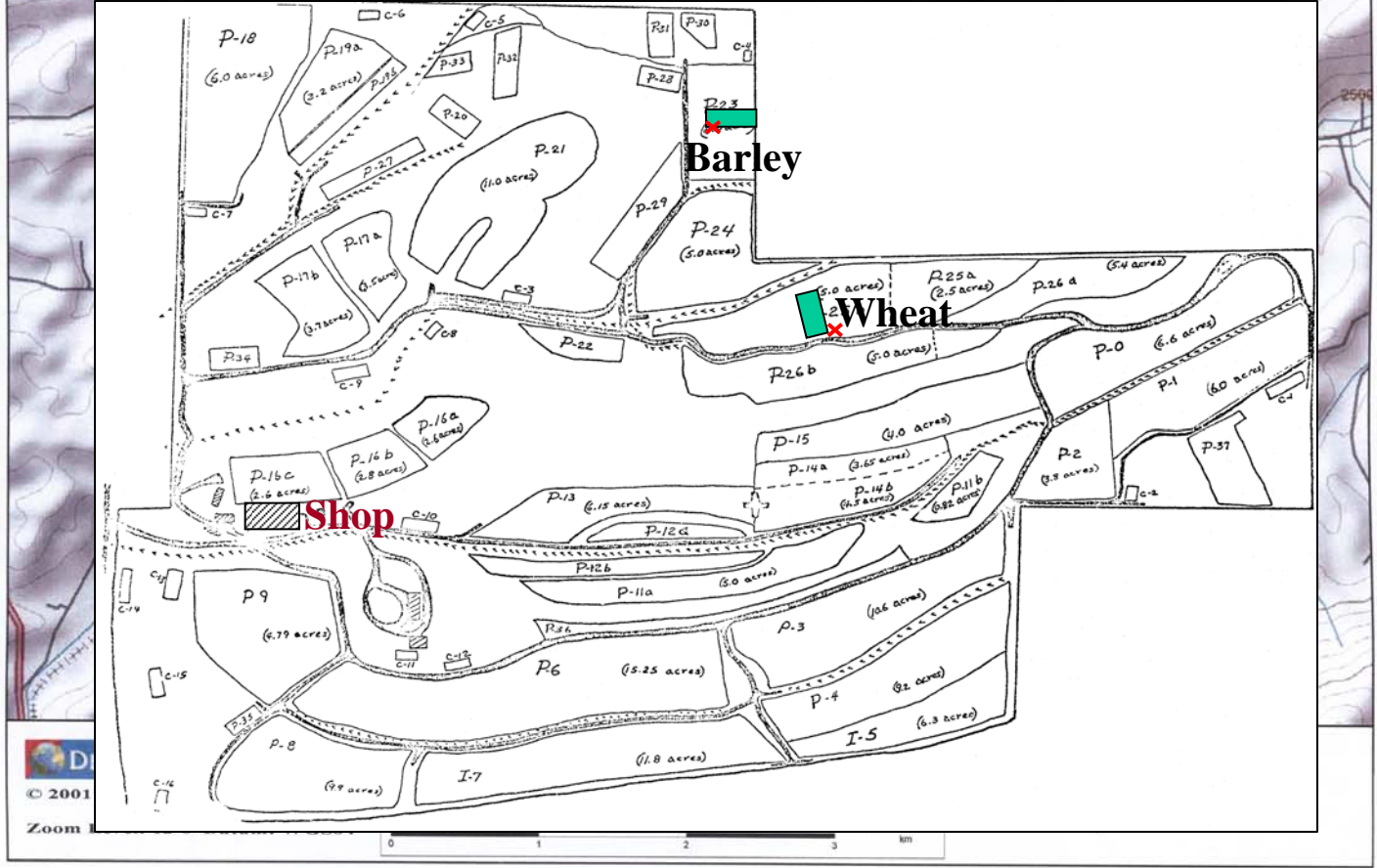
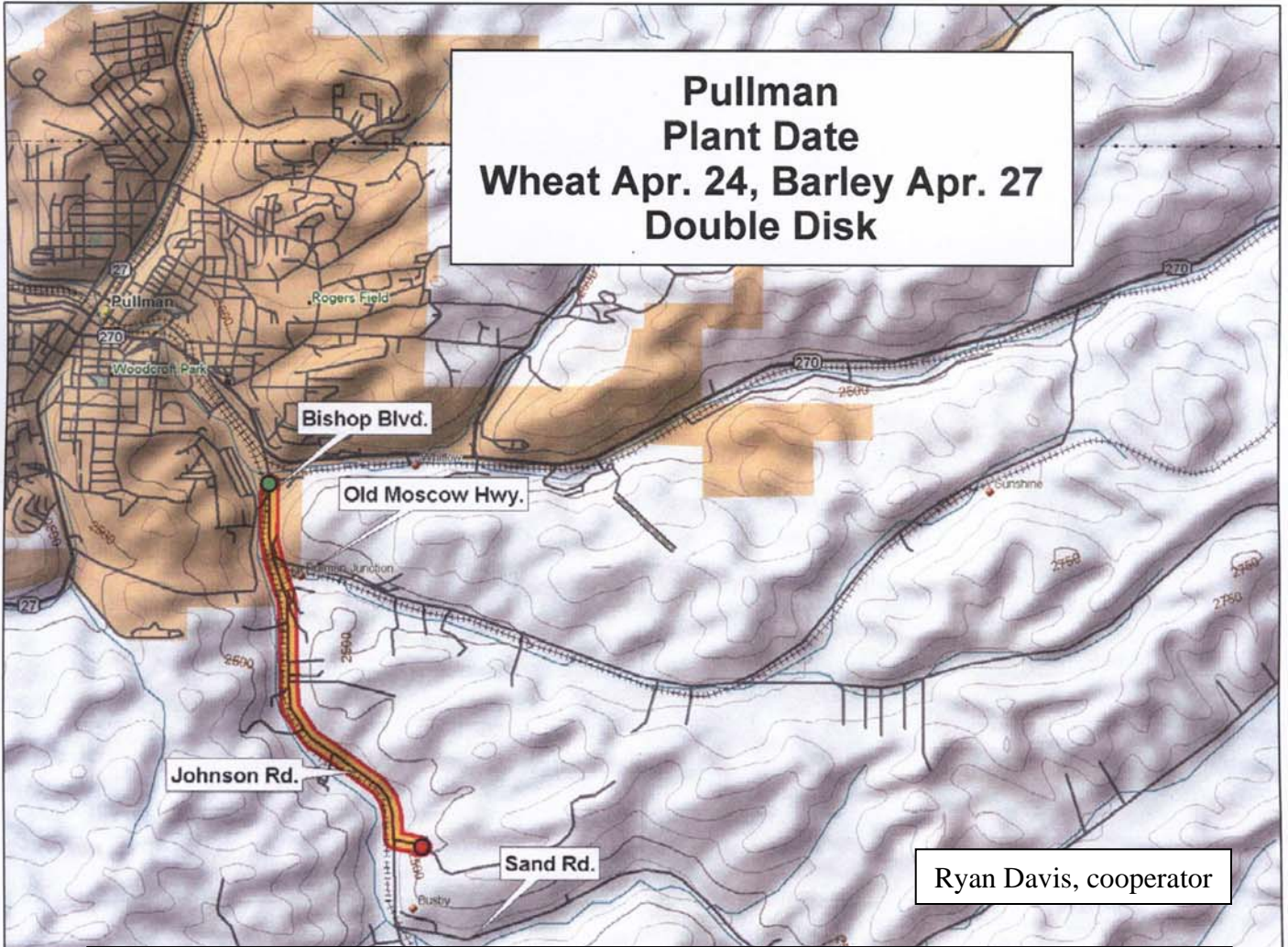


**Pullman  
Plant Date  
Wheat Apr. 24, Barley Apr. 27  
Double Disk**



**2011 Spring Barley**

Entry	Name
1	04WA-113.22
2	05WA-316.99
3	05WA-316.K
4	06WA-458.14
5	07MB-390
6	2004NZ151
7	2004NZ163
8	AC Metcalfe
9	Baronesse
10	Bentley
11	Bob
12	CDC Copeland
13	CDC Meredith
14	Champion
15	Clearwater
16	Harrington
17	Lenetah
18	Meresse
19	Radiant
20	Spaulding
21	Tetonia
22	WAS 2
23	WAS 4
24	2004NZ170
25	2004NZ223
26	2Ab04-X01084-27
27	2Ab17271
28	Newdale
29	07WA-601.6
30	07WA-630.19
31	07WA-684.17
32	07WA-677.1
33	07WA-649.7
34	07WA-658.8
35	07WA-682.1
36	07WA-614.4

Location	Plant Date
Almira	22-Apr
Bickleton	12-May
Fairfield	2-May
Dayton	18-Apr
Farmiington	11-May
Lamont	18-Apr
Mayview	29-Apr
Pullamn	27-Apr
Reardan	20-Apr
St. John	20-Apr
Walla Walla	25-Mar
Mt. Vernon	26-Apr

Covered  
 Hulless

## 2011 Pullman Spring Barley Variety Trial (P-23)

32	Breeding Trials	Breeding Trials																	
31																			
30																			
29																			
28																			
27																			
26																			
25																			
24																			
23																			
22																			
21																			
20																			
19																			
18																			
17																			
16																			
15																			
14																			
13																			
12																			
11																			
10	Breeding Trials																		
9																			
8																			
7																			
6																			
5																			
4																			
3																			
2																			
1																			
range		20	21	22	23	24	25	26	27	28	29	30	31	32	33	34	35	36	37

Border

Border