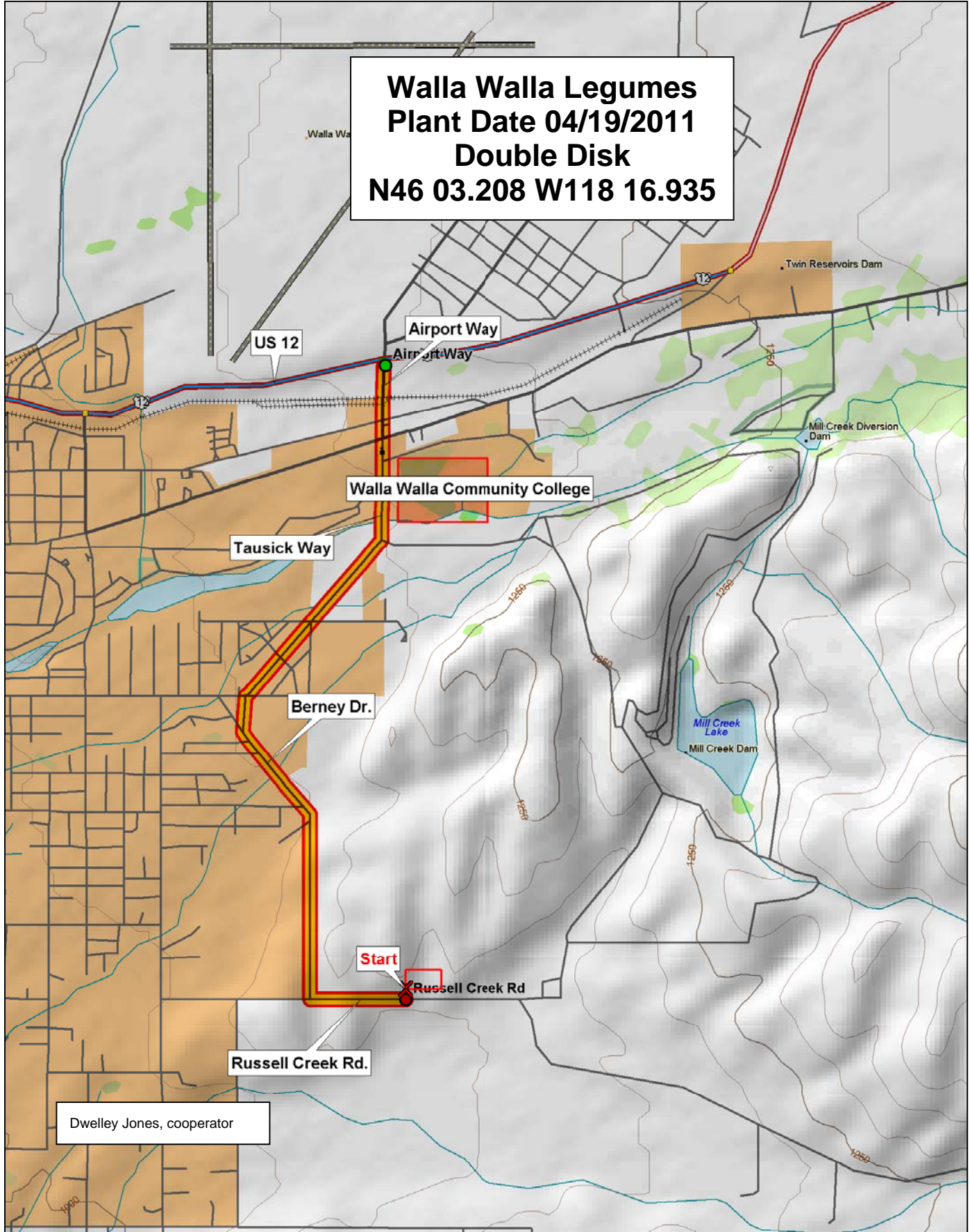


**Walla Walla Legumes  
Plant Date 04/19/2011  
Double Disk  
N46 03.208 W118 16.935**

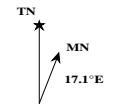
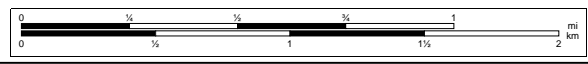


Dwellely Jones, cooperator



© 2001 DeLorme. Topo USA® 3.0  
Zoom Level: 12-7 Datum: WGS84

Scale 1 : 28 125  
1" = 2 343.75 ft



## 2011 WSU Legume Variety Trials Dusty, Farmington, Palouse, Walla Walla

Range

### Pea Variety Trial

### Lentil Variety Trial

### Chickpea Variety Trial

6	Pea Border	7	28	17	5	3	6	9	30	22	8	15	19	29	18	10	Pea Border	Lentil Border	11	10	6	7	12	20	8	18	15	24	2	19	Lentil Border	Chickpea Border	Fill	7	2	6	11	4	Chickpea Border
5		26	23	13	25	2	4	27	21	16	1	12	11	14	20	24			23	16	22	13	14	17	1	9	21	4	3	5			9	3	10	1	5	8	
4		4	23	6	3	11	29	17	27	2	12	26	16	9	5	18			11	15	17	8	3	22	2	14	18	13	21	10			Fill	10	7	2	5	4	
3		20	15	8	25	28	10	30	1	7	14	22	24	19	21	13			6	5	20	16	23	9	4	24	12	19	7	1			11	9	8	3	1	6	
2		26	11	21	29	8	14	6	28	27	18	25	10	24	17	16			24	6	8	3	4	12	13	17	11	19	5	22			9	11	10	9	8	7	
1		30	13	12	15	3	2	7	4	19	9	5	1	20	22	23			16	2	10	1	7	23	14	18	20	21	15	9			1	2	3	4	5	6	
Row		1	2	3	4	5	6	7	8	9	10	11	12	13	14	15			1	2	3	4	5	6	7	8	9	10	11	12		1	2	3	4	5	6		

2011 WSU Pea Variety Trial  
 Dusty, Farmington, Palouse, Walla Walla

Range

6	Pro 081-7155	PS06101119	PS05ND0232	Pacifica	Banner	Pro 081-7116	PS05100840	Solstice	Carousel	Pro 091-7137	Cruiser	Joel	PS02101137	NDP080111	PS03101445	Border	
5	PS03101822	Universal	PS07100470	Pro 822	Ariel	Columbian	PS04100710	Stirling	Prodigy	Aragorn	PS05100736	PS05100632	PS07100471	Monarch	PRL 415		
4	Columbian	Universal	Pro 081-7116	Banner	PS05100632	PS02101137	PS05ND0232	PS04100710	Ariel	PS05100736	PS03101822	Prodigy	PS05100840	Pacifica	NDP080111		
3	Monarch	Cruiser	Pro 091-7137	Pro 822	PS06101119	PS03101445	Solstice	Aragorn	Pro 081-7155	PS07100471	Carousel	PRL 415	Joel	Stirling	PS07100470		
2	PS03101822	PS05100632	Stirling	PS02101137	Pro 091-7137	PS07100471	Pro 081-7116	PS06101119	PS04100710	NDP080111	Pro 822	PS03101445	PRL 415	PS05ND0232	Prodigy		
1	Solstice	PS07100470	PS05100736	Cruiser	Banner	Ariel	Pro 081-7155	Columbian	Joel	PS05100840	Pacifica	Aragorn	Monarch	Carousel	Universal		
Row	1	2	3	4	5	6	7	8	9	10	11	12	13	14	15	16	17

2011 WSU Lentil Variety Trial  
 Dusty, Farmington, Palouse, Walla Walla

Range														
6	Crimson	LC7ND068E	Essex	LC05600812E	LC01602062T	LC7ND055R	LC08600005E	LC06600839L	Brewer	LC99602585RZ	Pardina	LC01602300R		
5	LC0660939YZ	Merrit	Cedar	LC07ND0176T	LC7ND202T	LC06601734L	Morena	LC01602273E	Shasta	LC08600114P	LC08600113P	Eston		
4	Crimson	Brewer	LC06601734L	LC08600005E	LC08600113P	Cedar	Pardina	LC7ND202T	LC06600839L	LC07ND0176T	Shasta	LC7ND068E		
3	Essex	Eston	LC7ND055R	Merrit	LC0660939YZ	LC01602273E	LC08600114P	LC99602585RZ	LC01602062T	LC01602300R	LC05600812E	Morena		
2	LC99602585RZ	Essex	LC08600005E	LC08600113P	LC08600114P	LC01602062T	LC07ND0176T	LC06601734L	Crimson	LC01602300R	Eston	Cedar		
1	Merrit	Pardina	LC7ND068E	Morena	LC05600812E	LC0660939YZ	LC7ND202T	LC06600839L	LC7ND055R	Shasta	Brewer	LC01602273E		
Row	1	2	3	4	5	6	7	8	9	10	11	12	13	14

2011 WSU Chickpea Variety Trial  
 Dusty, Farmington, Palouse, Walla Walla

Range

6	Border	Filler	CA0390B007C	Dwellely	CA0690B0409C	OR491-11	CA04900421C	Border
5		CDC Frontier	Sierra	AL007-11	Sawyer	CA04900843C	CA0690B0250C	
4		Filler	AL007-11	CA0390B007C	Dwellely	CA04900843C	CA04900421C	
3		OR491-11	CDC Frontier	CA0690B0250C	Sierra	Sawyer	CA0690B0409C	
2		CDC Frontier	OR491-11	AL007-11	CDC Frontier	CA0690B0250C	CA0390B007C	
1		Sawyer	Dwellely	Sierra	CA04900421C	CA04900843C	CA0690B0409C	
Row	1	2	3	4	5	6	7	8