



# 2008-2009 WSU Winter Wheat Varietal Trial

Border										
1	38	29	45	41	22	7	59	21	24	9
2	32	5	30	4	2	36	50	27	15	6
3	11	31	43	13	54	18	53	51	60	42
4	49	46	24	48	2	54	8	38	20	47
5	36	39	52	30	53	6	60	26	11	32
6	29	17	59	58	10	22	37	7	34	25
7	37	21	13	55	46	5	47	29	52	51
8	58	57	38	42	30	59	15	26	56	34
9	27	11	44	12	24	19	48	1	31	16
10	31	16	32	17	50	53	25	43	3	49
11	43	13	54	18	53	51	60	42	33	49
12	44	12	24	19	48	1	31	16	32	17
13	54	18	53	51	60	42	33	49	12	37
14	2	54	8	38	20	47	50	42	5	28
15	3	12	56	14	35	9	1	8	17	14
16	14	34	46							
17	17	14	34	46						
18	18	19	18							
19	18	18								
20	18	18								
21	18	18								
22	18	18								
23	18	18								
24	18	18								
25	18	18								
26	18	18								
27	18	18								
28	18	18								
29	18	18								
30	18	18								
Border										

Planting Date	
Almira	8-Sep
Anatone	24-Sep
Colton	1-Oct
Connell	4-Sep
Creston	15-Sep
Dayton	24-Sep
Dusty	16-Sep
Fairfield	29-Sep
Farmington	30-Sep
Harrington	9-Sep
Horse Heaven	8-Oct
Lamont	8-Sep
Lind	4-Sep
Mayview	14-Oct
Moses Lake	22-Oct
Pullman	3-Oct
Reardan	25-Sep
Ritzville	9-Sep
St. Andrews	5-Sep
St. John	16-Sep
Walla Walla	6-Oct

	COMMON
	CLUB

#	ENTRY
1	CODA
2	CHUKAR
3	CARA
4	BRUEHL
5	ARS970075-3
6	ARS970168-2C
7	ARS970071-3C
8	MADSEN
9	ELTAN
10	ROD
11	FINCH
12	MASAMI
13	XERPHA
14	WA008063
15	WA008064
16	WA008065
17	WA008066
18	WA008092
19	WA008093
20	WA008094
21	ARS960277L
22	ARS970170-2L
23	LAMBERT
24	BRUNDAGE 96
25	SIMON
26	BITTERROOT
27	9364901A
28	STEPHENS
29	TUBBS 06
30	SKILES

#	ENTRY
31	OR2060324
32	OR2050293
33	OR2040726
34	WB 523
35	WB 528
36	WB 456
37	BZ6W02-616
38	GEORGE
39	RJAMES
40	CASHUP
41	SALUTE
42	LEGION
43	ORF2267-03
44	CDC PTARMIGAN
45	KCF08001
46	KCF08002
47	ID990435
48	ID02-859
49	ORI2060306
50	ORCF-101
51	ORCF-102
52	ORCF-103
53	AP 700 CL
54	WB 1020M
55	WB 1066M
56	WB 1070M
57	MADSEN/ROD
58	ELTAN/MADSEN
59	ELTAN/TUBBS06
60	ROD/TUBBS06

Plots are randomized with 3 replications-There is a border strip on each side of the nursery

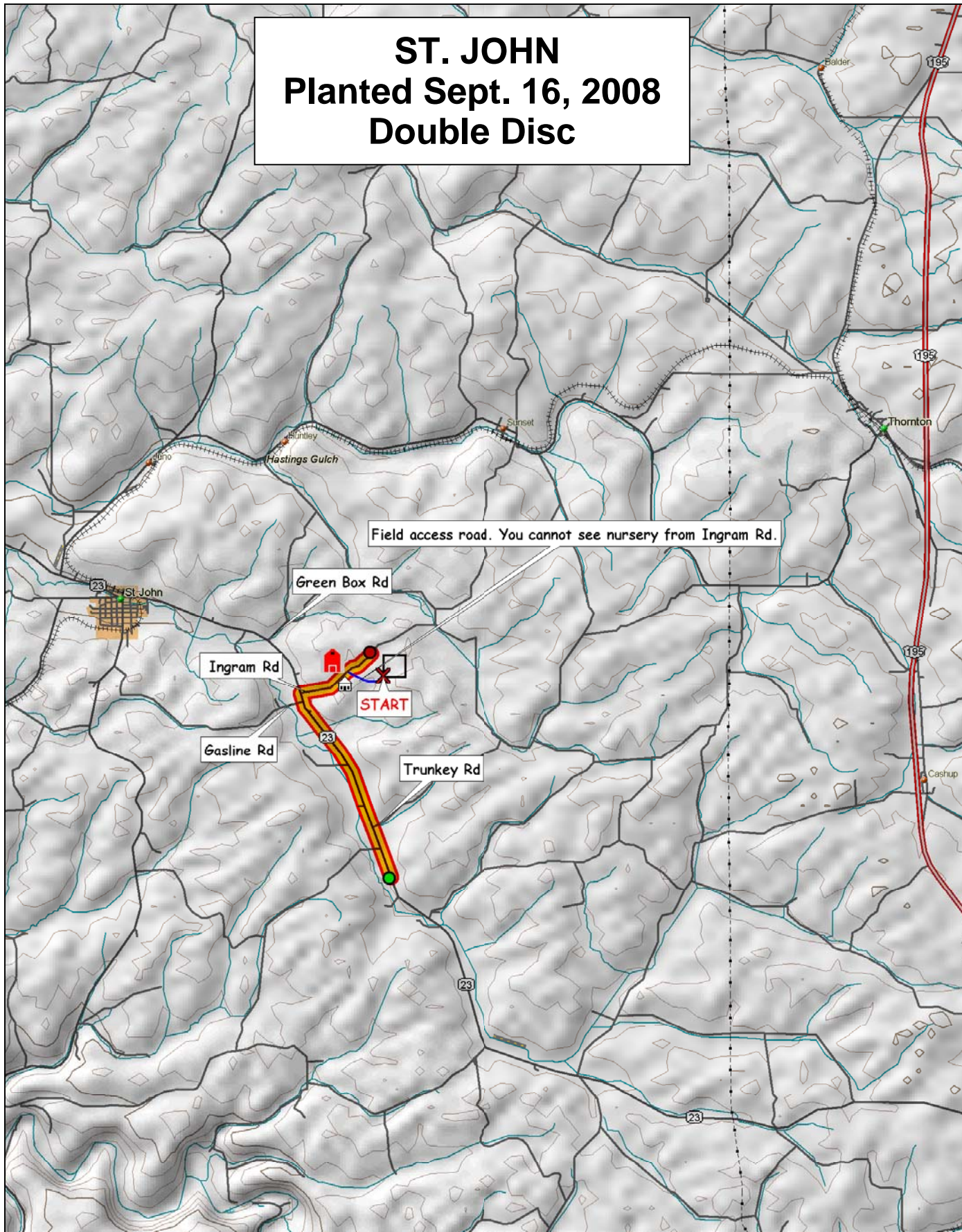
<http://variety.wsu.edu>

WASHINGTON STATE UNIVERSITY  
EXTENSION

World Class. Face to Face.

# ST. JOHN

Planted Sept. 16, 2008  
Double Disc



© 2001 DeLorme. Topo USA® 3.0

Zoom Level: 11-0 Datum: WGS84

Scale 1 : 100,000

1" = 1.58 mi

