

Moses Lake

Soft White Variety Trial

BORDER	27	11	44	12	24	19	48	1	31	16	32	17	50	53	25	43	3	49	9	40
	58	57	38	42	30	59	15	26	56	34	6	14	39	18	7	41	23	54	4	28
	37	21	13	55	46	5	47	29	52	51	36	22	8	60	10	33	35	20	45	2
	29	17	59	58	10	22	37	7	34	25	21	3	12	56	14	35	9	1	4	51
	36	39	52	30	53	6	60	26	11	32	45	23	57	16	43	15	44	13	19	18
	49	46	24	48	2	54	8	38	20	47	50	42	5	28	33	40	55	41	27	31
	11	31	43	13	54	18	53	51	60	42	33	49	12	37	1	8	17	14	34	46
	32	5	30	4	2	36	50	27	15	6	39	16	26	55	44	20	23	19	40	58
	38	29	45	41	22	7	59	21	24	9	48	52	3	28	35	57	56	47	10	25

Irrigated Only Hard Variety Trial

BORDER	19	5	29	15	10	16	21	27	20	14
	13	3	23	2	17	28	12	18	1	22
	8	24	30	6	26	9	11	7	25	4
	17	1	4	8	16	21	23	19	9	6
	2	7	22	10	26	20	30	12	13	5
	28	14	25	3	15	29	24	11	27	18
	10	9	30	17	28	14	29	22	4	13
	6	20	11	1	15	8	18	25	2	21
	5	24	16	7	23	12	27	26	3	19



2008-2009 IRRIGATED ONLY HARD TRIAL

ENTRY	VARIETY	CLASS	ENTRY	VARIETY	CLASS
1	BAUERMEISTER	HRW	16	YIELDSTAR 45	SWH
2	BOUNDARY	HRW	17	UI DARWIN	HDWH
3	IDO651	HRW	18	PALOMINO	HDWH
4	IDO653	HRW	19	NUDAKOTA	HDWH
5	NORWEST 553	HRW	20	MOL	HDWH
6	EDDY	HRW	21	MIETI	HDWH
7	ACS 52025	HRW	22	DH99-55-2	SRW
8	ML9W05-2506	HRW	23	WA008063	SWH
9	AGRIPRO PALADIN	HRW	24	WA008064	SWH
10	W98-344	HRW	25	WA008065	SWH
11	BC002-2	HRW	26	VW-29	SWH
12	DECLO	HRW	27	VW-30	SWH
13	PEREGRINE	HRW	28	FE-35	SWH
14	ACCIPITER	HRW	29	MJ-9	SWH
15	ESPERIA	HRW	30	STEPHENS	SWH

2008-2009 WSU Winter Wheat Varietal Trial

Border										
1	38	29	45	41	22	7	59	21	24	9
2	32	5	30	4	2	36	50	27	15	6
3	11	31	43	13	54	18	53	51	60	42
4	49	46	24	48	2	54	8	38	20	47
5	36	39	52	30	53	6	60	26	11	32
6	29	17	59	58	10	22	37	7	34	25
7	37	21	13	55	46	5	47	29	52	51
8	56	57	38	42	30	59	15	26	56	34
9	27	11	44	12	24	19	48	1	31	16
10	1	3	4	5	6	7	8	9	10	11
11	16	32	17	50	53	25	43	3	49	9
12	49	9	40	14	39	18	7	41	23	54
13	4	28	19	19	18	1	4	51	2	45
14	13	19	18	1	4	51	2	45	2	45
15	13	19	18	1	4	51	2	45	2	45
16	13	19	18	1	4	51	2	45	2	45
17	13	19	18	1	4	51	2	45	2	45
18	13	19	18	1	4	51	2	45	2	45
19	13	19	18	1	4	51	2	45	2	45
20	13	19	18	1	4	51	2	45	2	45
21	13	19	18	1	4	51	2	45	2	45
22	13	19	18	1	4	51	2	45	2	45
23	13	19	18	1	4	51	2	45	2	45
24	13	19	18	1	4	51	2	45	2	45
25	13	19	18	1	4	51	2	45	2	45
26	13	19	18	1	4	51	2	45	2	45
27	13	19	18	1	4	51	2	45	2	45
28	13	19	18	1	4	51	2	45	2	45
29	13	19	18	1	4	51	2	45	2	45
30	13	19	18	1	4	51	2	45	2	45
Border										

Planting Date	
Almira	8-Sep
Anatone	24-Sep
Colton	1-Oct
Connell	4-Sep
Creston	15-Sep
Dayton	24-Sep
Dusty	16-Sep
Fairfield	29-Sep
Farmington	30-Sep
Harrington	9-Sep
Horse Heaven	8-Oct
Lamont	8-Sep
Lind	4-Sep
Mayview	14-Oct
Moses Lake	22-Oct
Pullman	3-Oct
Reardan	25-Sep
Ritzville	9-Sep
St. Andrews	5-Sep
St. John	16-Sep
Walla Walla	6-Oct

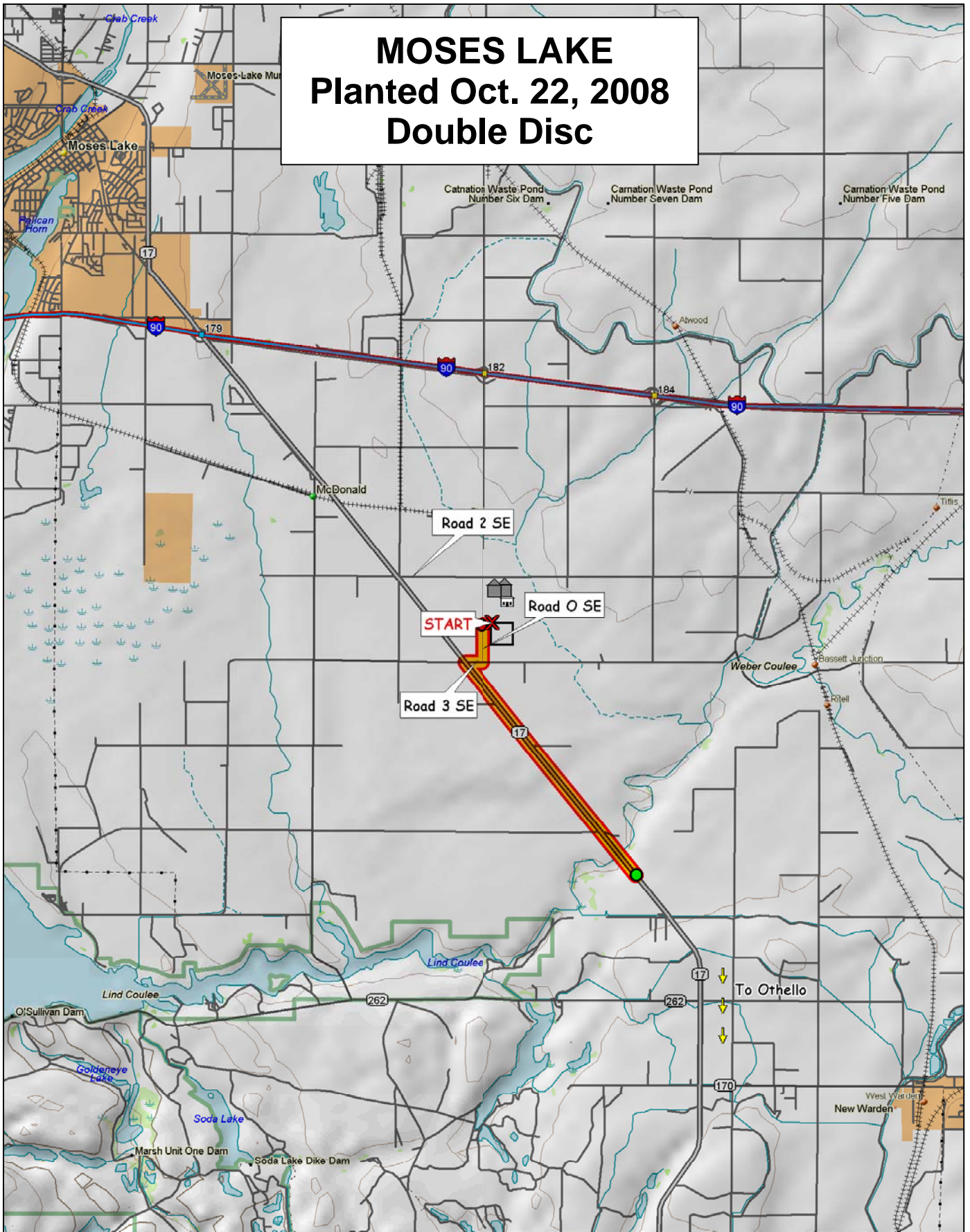
	COMMON
	CLUB

#	ENTRY	#	ENTRY
1	CODA	31	OR2060324
2	CHUKAR	32	OR2050293
3	CARA	33	OR2040726
4	BRUEHL	34	WB 523
5	ARS970075-3	35	WB 528
6	ARS970168-2C	36	WB 456
7	ARS970071-3C	37	BZ6W02-616
8	MADSEN	38	GEORGE
9	ELTAN	39	RJAMES
10	ROD	40	CASHUP
11	FINCH	41	SALUTE
12	MASAMI	42	LEGION
13	XERPHA	43	ORF2267-03
14	WA008063	44	CDC PTARMIGAN
15	WA008064	45	KCF08001
16	WA008065	46	KCF08002
17	WA008066	47	ID990435
18	WA008092	48	ID02-859
19	WA008093	49	ORI2060306
20	WA008094	50	ORCF-101
21	ARS960277L	51	ORCF-102
22	ARS970170-2L	52	ORCF-103
23	LAMBERT	53	AP 700 CL
24	BRUNDAGE 96	54	WB 1020M
25	SIMON	55	WB 1066M
26	BITTERROOT	56	WB 1070M
27	9364901A	57	MADSEN/ROD
28	STEPHENS	58	ELTAN/MADSEN
29	TUBBS 06	59	ELTAN/TUBBS06
30	SKILES	60	ROD/TUBBS06

Plots are randomized with 3 replications-There is a border strip on each side of the nursery

<http://variety.wsu.edu>

MOSES LAKE Planted Oct. 22, 2008 Double Disc



© 2001 DeLorme. Topo USA® 3.0

Zoom Level: 11-0 Datum: WGS84

Scale 1 : 100,000

1" = 158 mi

