

Harrington

Soft White Variety Trial

USDA-ARS Dr. Kim Campbell

BORDER	27	11	44	12	24	19	48	1	31	16	32	17	50	53	25	43	3	49	9	40	BORDER	<p style="text-align: center;"> USDA-ARS Dr. Campbell 2008-2009 WA Elite 10 passes </p>	<p style="text-align: center;"> USDA-ARS Dr. Campbell 2008-2009 OR Elite 10 passes </p>	<p style="text-align: center;"> USDA-ARS Dr. Campbell 2008-2009 Seeding Rate 6 passes </p>	BORDER
	58	57	38	42	30	59	15	26	56	34	6	14	39	18	7	41	23	54	4	28					
	37	21	13	55	46	5	47	29	52	51	36	22	8	60	10	33	35	20	45	2					
	29	17	59	58	10	22	37	7	34	25	21	3	12	56	14	35	9	1	4	51					
	36	39	52	30	53	6	60	26	11	32	45	23	57	16	43	15	44	13	19	18					
	49	46	24	48	2	54	8	38	20	47	50	42	5	28	33	40	55	41	27	31					
	11	31	43	13	54	18	53	51	60	42	33	49	12	37	1	8	17	14	34	46					
	32	5	30	4	2	36	50	27	15	6	39	16	26	55	44	20	23	19	40	58					
	38	29	45	41	22	7	59	21	24	9	48	52	3	28	35	57	56	47	10	25					

2008-2009 WSU Winter Wheat Varietal Trial

1
2
3
4
5
6
7
8
9
10
11
12
13
14
15
16
17
18
19
20

Border	
1	38
2	32
3	11
4	49
5	36
6	29
7	37
8	58
9	27
10	11
11	44
12	44
13	12
14	24
15	19
16	48
17	1
18	31
19	16
20	32
21	17
22	50
23	53
24	25
25	43
26	3
27	49
28	9
29	4
30	40
31	58
32	5
33	30
34	4
35	2
36	7
37	59
38	21
39	24
40	9
41	48
42	52
43	3
44	28
45	35
46	57
47	56
48	47
49	10
50	25
51	43
52	3
53	3
54	4
55	9
56	1
57	4
58	51
59	2
60	51
61	2
62	51
63	2
64	51
65	2
66	51
67	2
68	51
69	2
70	51
71	2
72	51
73	2
74	51
75	2
76	51
77	2
78	51
79	2
80	51
81	2
82	51
83	2
84	51
85	2
86	51
87	2
88	51
89	2
90	51
91	2
92	51
93	2
94	51
95	2
96	51
97	2
98	51
99	2
100	51
Border	

Planting Date	
Almira	8-Sep
Anatone	24-Sep
Colton	1-Oct
Connell	4-Sep
Creston	15-Sep
Dayton	24-Sep
Dusty	16-Sep
Fairfield	29-Sep
Farmington	30-Sep
Harrington	9-Sep
Horse Heaven	8-Oct
Lamont	8-Sep
Lind	4-Sep
Mayview	14-Oct
Moses Lake	22-Oct
Pullman	3-Oct
Reardan	25-Sep
Ritzville	9-Sep
St. Andrews	5-Sep
St. John	16-Sep
Walla Walla	6-Oct

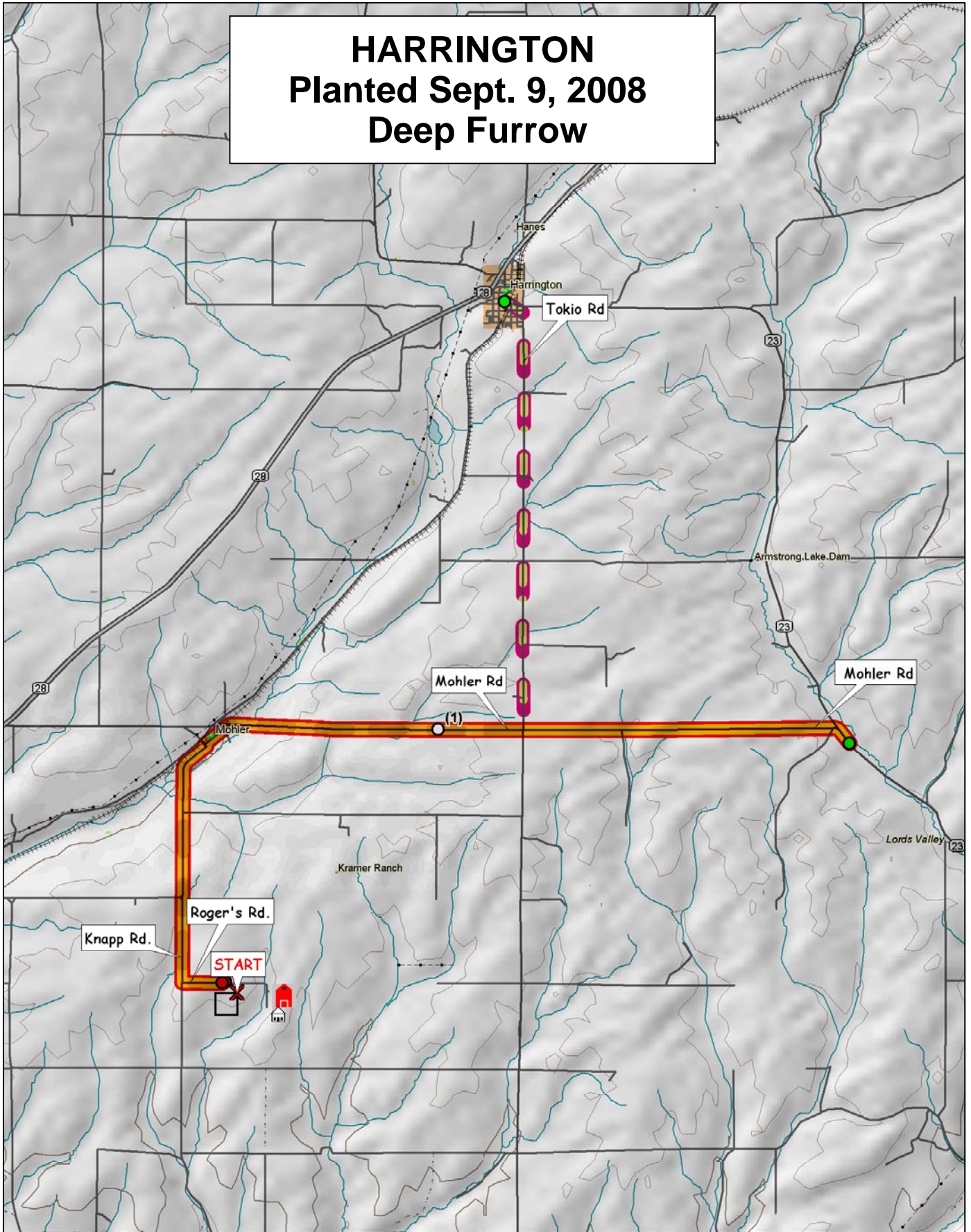
	COMMON
	CLUB

#	ENTRY	#	ENTRY
1	CODA	31	OR2060324
2	CHUKAR	32	OR2050293
3	CARA	33	OR2040726
4	BRUEHL	34	WB 523
5	ARS970075-3	35	WB 528
6	ARS970168-2C	36	WB 456
7	ARS970071-3C	37	BZ6W02-616
8	MADSEN	38	GEORGE
9	ELTAN	39	RJAMES
10	ROD	40	CASHUP
11	FINCH	41	SALUTE
12	MASAMI	42	LEGION
13	XERPHA	43	ORF2267-03
14	WA008063	44	CDC PTARMIGAN
15	WA008064	45	KCF08001
16	WA008065	46	KCF08002
17	WA008066	47	ID990435
18	WA008092	48	ID02-859
19	WA008093	49	ORI2060306
20	WA008094	50	ORCF-101
21	ARS960277L	51	ORCF-102
22	ARS970170-2L	52	ORCF-103
23	LAMBERT	53	AP 700 CL
24	BRUNDAGE 96	54	WB 1020M
25	SIMON	55	WB 1066M
26	BITTERROOT	56	WB 1070M
27	9364901A	57	MADSEN/ROD
28	STEPHENS	58	ELTAN/MADSEN
29	TUBBS 06	59	ELTAN/TUBBS06
30	SKILES	60	ROD/TUBBS06

Plots are randomized with 3 replications-There is a border strip on each side of the nursery

<http://variety.wsu.edu>

HARRINGTON Planted Sept. 9, 2008 Deep Furrow



© 2001 DeLorme. Topo USA® 3.0

Zoom Level: 11-0 Datum: WGS84

Scale 1 : 100,000

1" = 158 mi

