

# Locations: Almira, Connell, Dayton, H. Heaven, Lamont, Lind, Pullman, Reardan, Ritzville, Walla Walla

## Soft White Variety Trial

## Hard Variety Trial

<b>BORDER</b>	27	11	44	12	24	19	48	1	31	16	32	17	50	53	25	43	3	49	9	40	<b>BORDER</b>	6	11	33	20	10	25	16	28	27	23	32	4	<b>BORDER</b>
	58	57	38	42	30	59	15	26	56	34	6	14	39	18	7	41	23	54	4	28		12	14	19	30	15	22	26	17	35	9	13	8	
	37	21	13	55	46	5	47	29	52	51	36	22	8	60	10	33	35	20	45	2		18	1	36	34	24	21	31	3	29	7	5	2	
	29	17	59	58	10	22	37	7	34	25	21	3	12	56	14	35	9	1	4	51		14	25	11	19	30	1	5	6	9	12	34	22	
	36	39	52	30	53	6	60	26	11	32	45	23	57	16	43	15	44	13	19	18		23	16	3	17	32	7	33	10	15	35	8	4	
	49	46	24	48	2	54	8	38	20	47	50	42	5	28	33	40	55	41	27	31		36	21	29	20	2	13	31	26	28	24	18	27	
	11	31	43	13	54	18	53	51	60	42	33	49	12	37	1	8	17	14	34	46		6	10	22	18	14	30	7	9	33	15	12	21	
	32	5	30	4	2	36	50	27	15	6	39	16	26	55	44	20	23	19	40	58		28	35	29	13	26	4	3	27	32	36	31	34	
	38	29	45	41	22	7	59	21	24	9	48	52	3	28	35	57	56	47	10	25		8	2	25	20	11	19	5	23	17	24	1	16	

**2008-2009 WSU Hard Winter Wheat Varietal Trial**

Border											
1	2	3	4	5	6	7	8	9	10	11	12
1	2	3	4	5	6	7	8	9	10	11	12
2	3	4	5	6	7	8	9	10	11	12	1
3	4	5	6	7	8	9	10	11	12	1	2
4	5	6	7	8	9	10	11	12	1	2	3
5	6	7	8	9	10	11	12	1	2	3	4
6	7	8	9	10	11	12	1	2	3	4	5
7	8	9	10	11	12	1	2	3	4	5	6
8	9	10	11	12	1	2	3	4	5	6	7
9	10	11	12	1	2	3	4	5	6	7	8
10	11	12	1	2	3	4	5	6	7	8	9
11	12	1	2	3	4	5	6	7	8	9	10
12	1	2	3	4	5	6	7	8	9	10	11
Border											

Planting Date	
Almira	8-Sep
Connell	4-Sep
Dayton	24-Sep
Horse Heaven	8-Oct
Lamont	8-Sep
Lind	4-Sep
Pullman	3-Oct
Reardan	25-Sep
Ritzville	9-Sep
St. Andrews	5-Sep
Walla Walla	6-Oct

#	ENTRY	#	ENTRY
1	FINLEY	19	W98-344
2	HATTON	20	BC002-2
3	BAUERMEISTER	21	DECLO
4	WA008098	22	PEREGRINE
5	WA008022	23	ACCIPTER
6	WA008068	24	ESPERIA
7	WA008095	25	MDM
8	FARNUM	26	WA008070
9	WA008061	27	WA008096
10	BOUNDARY	28	WA008097
11	IDO683	29	UI DARWIN
12	NORWEST 553	30	IDO651
13	EDDY	31	IDO658
14	MOL	32	ML9W04-2543W
15	ACS 52025	33	PALOMINO
16	ML9W05-2506	34	NUDAKOTA
17	NORRIS	35	MIETI
18	AGRIPRO PALADIN	36	ELTAN

Plots are randomized with 3 replications-There is a border strip on each side of the nursery



**2008-2009 WSU Winter Wheat Varietal Trial**

Border											
1	2	3	4	5	6	7	8	9	10	11	12
1	2	3	4	5	6	7	8	9	10	11	12
2	3	4	5	6	7	8	9	10	11	12	1
3	4	5	6	7	8	9	10	11	12	1	2
4	5	6	7	8	9	10	11	12	1	2	3
5	6	7	8	9	10	11	12	1	2	3	4
6	7	8	9	10	11	12	1	2	3	4	5
7	8	9	10	11	12	1	2	3	4	5	6
8	9	10	11	12	1	2	3	4	5	6	7
9	10	11	12	1	2	3	4	5	6	7	8
10	11	12	1	2	3	4	5	6	7	8	9
11	12	1	2	3	4	5	6	7	8	9	10
12	1	2	3	4	5	6	7	8	9	10	11
Border											

Planting Date	
Almira	8-Sep
Anatone	24-Sep
Colton	1-Oct
Connell	4-Sep
Creston	15-Sep
Dayton	24-Sep
Dusty	16-Sep
Fairfield	29-Sep
Farmington	30-Sep
Harrington	9-Sep
Horse Heaven	8-Oct
Lamont	8-Sep
Lind	4-Sep
Mayview	14-Oct
Moses Lake	22-Oct
Pullman	3-Oct
Reardan	25-Sep
Ritzville	9-Sep
St. Andrews	5-Sep
St. John	16-Sep
Walla Walla	6-Oct

#	ENTRY	#	ENTRY
1	CODA	31	OR2060324
2	CHUKAR	32	OR2050293
3	CARA	33	OR2040726
4	BRUEHL	34	WB 523
5	ARS970075-3	35	WB 528
6	ARS970168-2C	36	WB 456
7	ARS970071-3C	37	BZ6W02-616
8	MADSEN	38	GEORGE
9	ELTAN	39	RJAMES
10	ROD	40	CASHUP
11	FINCH	41	SALUTE
12	MASAMI	42	LEGION
13	XERPHA	43	ORF2267-03
14	WA008063	44	CDC PTARMIGAN
15	WA008064	45	KCF08001
16	WA008065	46	KCF08002
17	WA008066	47	ID990435
18	WA008092	48	ID02-859
19	WA008093	49	ORI2060306
20	WA008094	50	ORCF-101
21	ARS960277L	51	ORCF-102
22	ARS970170-2L	52	ORCF-103
23	LAMBERT	53	AP 700 CL
24	BRUNDAGE 96	54	WB 1020M
25	SIMON	55	WB 1066M
26	BITTERROOT	56	WB 1070M
27	9364901A	57	MADSEN/ROD
28	STEPHENS	58	ELTAN/MADSEN
29	TUBBS 06	59	ELTAN/TUBBS06
30	SKILES	60	ROD/TUBBS06

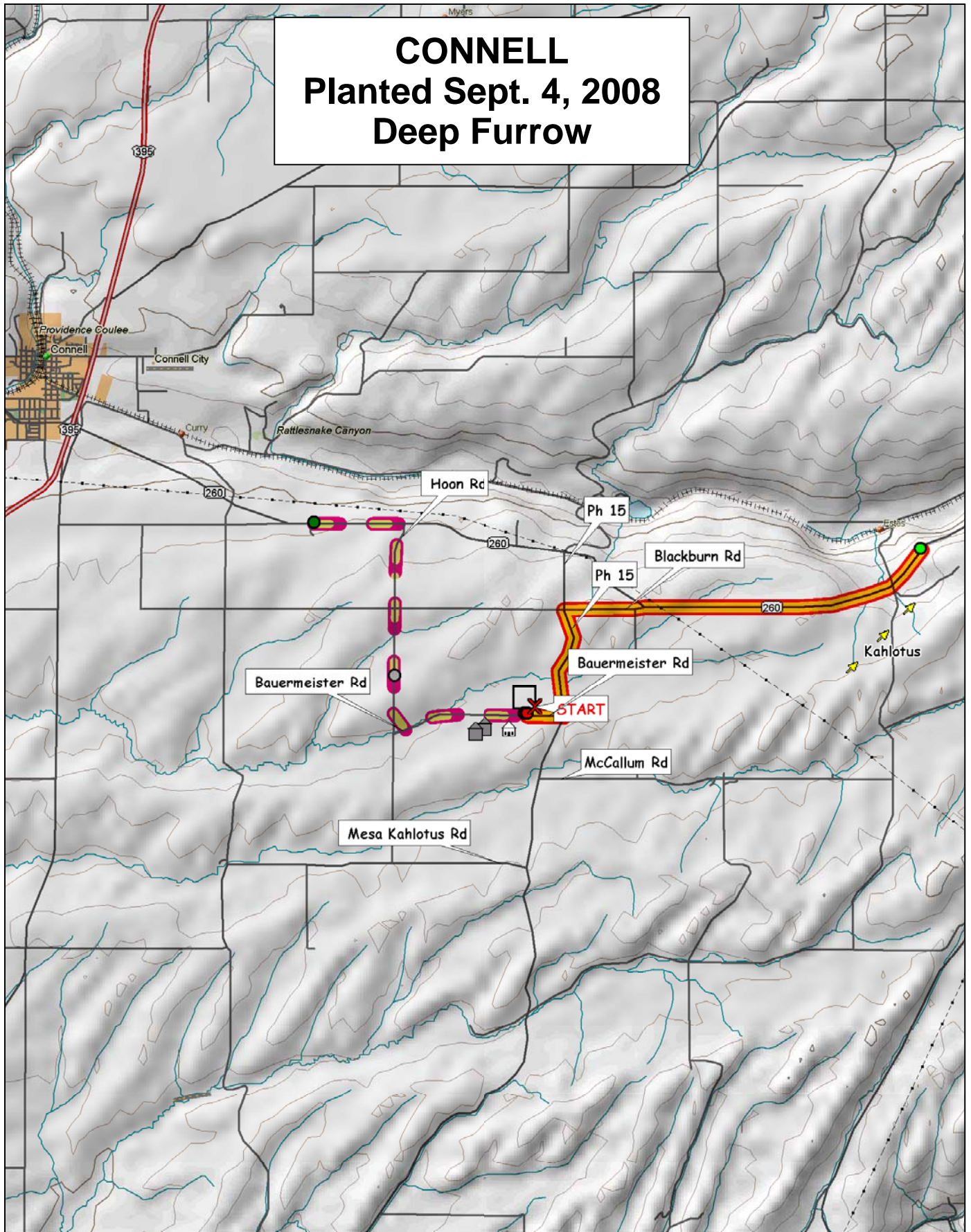
Plots are randomized with 3 replications-There is a border strip on each side of the nursery



<http://variety.wsu.edu>

# CONNELL

Planted Sept. 4, 2008  
Deep Furrow



© 2001 DeLorme. Topo USA® 3.0

Zoom Level: 11-0 Datum: WGS84

Scale 1 : 100 000

1" = 1.58 mi

