



# 2008-2009 WSU Winter Wheat Varietal Trial

Border	
1	38
2	32
3	11
4	49
5	36
6	29
7	37
8	58
9	27
10	11
11	44
12	57
13	38
14	42
15	30
16	59
17	15
18	26
19	56
20	34
21	6
22	14
23	39
24	18
25	53
26	25
27	21
28	3
29	12
30	56
31	14
32	39
33	18
34	7
35	41
36	23
37	54
38	4
39	28
40	33
41	35
42	20
43	43
44	3
45	49
46	9
47	40
48	28
49	51
50	4
51	5
52	19
53	18
54	45
55	2
56	27
57	31
58	46
59	4
60	58
Border	

Planting Date	
Almira	8-Sep
Anatone	24-Sep
Colton	1-Oct
Connell	4-Sep
Creston	15-Sep
Dayton	24-Sep
Dusty	16-Sep
Fairfield	29-Sep
Farmington	30-Sep
Harrington	9-Sep
Horse Heaven	8-Oct
Lamont	8-Sep
Lind	4-Sep
Mayview	14-Oct
Moses Lake	22-Oct
Pullman	3-Oct
Reardan	25-Sep
Ritzville	9-Sep
St. Andrews	5-Sep
St. John	16-Sep
Walla Walla	6-Oct

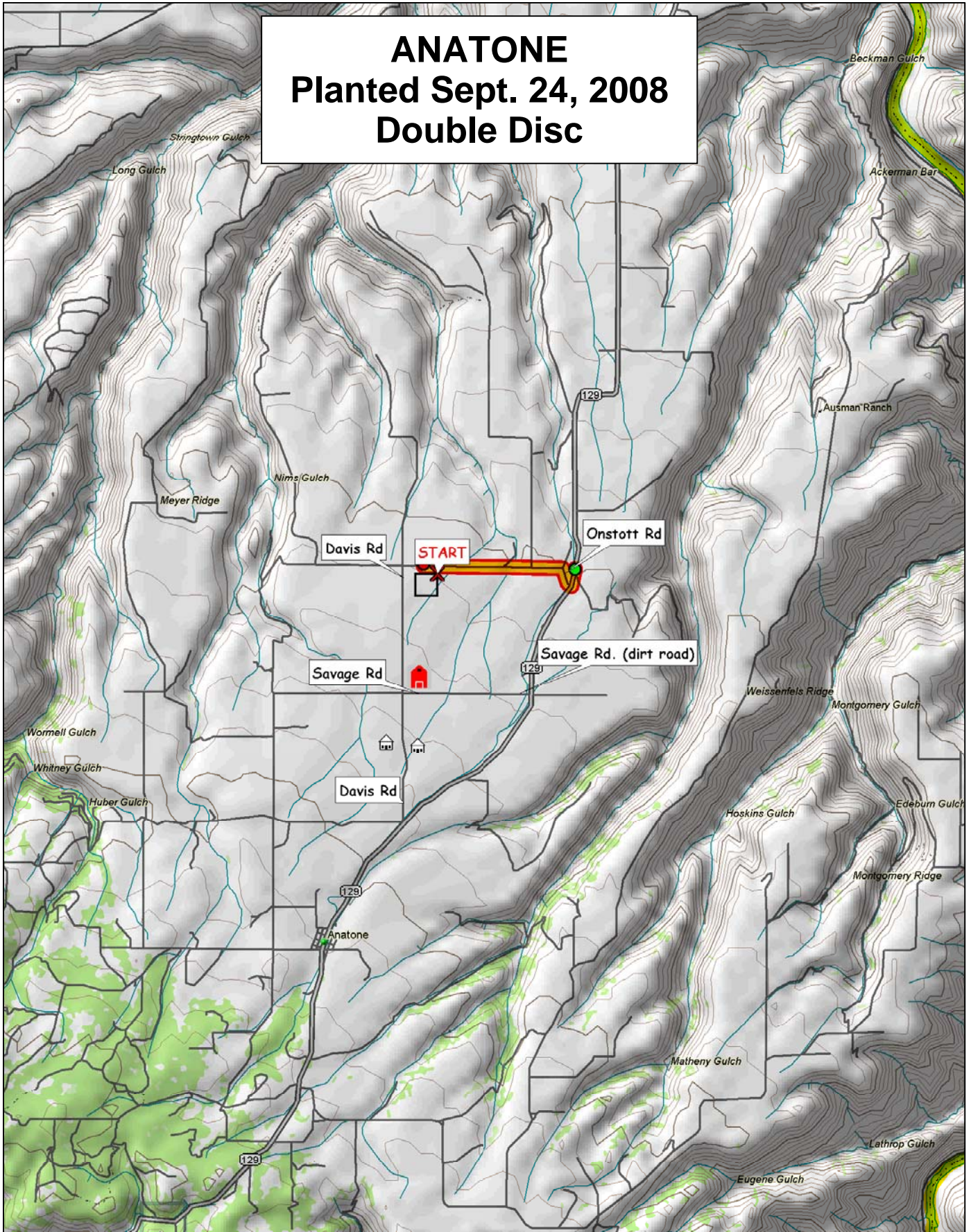
#	ENTRY	#	ENTRY
1	CODA	31	OR2060324
2	CHUKAR	32	OR2050293
3	CARA	33	OR2040726
4	BRUEHL	34	WB 523
5	ARS970075-3	35	WB 528
6	ARS970168-2C	36	WB 456
7	ARS970071-3C	37	BZ6W02-616
8	MADSEN	38	GEORGE
9	ELTAN	39	RJAMES
10	ROD	40	CASHUP
11	FINCH	41	SALUTE
12	MASAMI	42	LEGION
13	XERPFA	43	ORF2267-03
14	WA008063	44	CDC PTARMIGAN
15	WA008064	45	KCF08001
16	WA008065	46	KCF08002
17	WA008066	47	ID990435
18	WA008092	48	ID02-859
19	WA008093	49	OR12060306
20	WA008094	50	ORCF-101
21	ARS960277L	51	ORCF-102
22	ARS970170-2L	52	ORCF-103
23	LAMBERT	53	AP 700 CL
24	BRUNDAGE 96	54	WB 1020M
25	SIMON	55	WB 1066M
26	BITTERROOT	56	WB 1070M
27	9364901A	57	MADSEN/ROD
28	STEPHENS	58	ELTAN/MADSEN
29	TUBBS 06	59	ELTAN/TUBBS06
30	SKILES	60	ROD/TUBBS06

Plots are randomized with 3 replications-There is a border strip on each side of the nursery



<http://variety.wsu.edu>

# ANATONE Planted Sept. 24, 2008 Double Disc



© 2001 DeLorme. Topo USA® 3.0

Zoom Level: 11-0 Datum: WGS84

Scale: 1" = 100,000'

1" = 1.58 mi

