

# 2008 LIND

WA8034	18	6	17	9	1	2	4	WA8034	3	1	11	7	WA8034	15	16	2	14	3	12	4	WA8034
	5	7	13	14	8	19	20		2	10	4	6		1	20	18	10	7	6	19	
	15	21	11	16	10	12	3		9	12	5	8		13	11	9	21	5	8	17	
	8	11	10	15	6	12	20		8	2	11	6		21	20	18	17	3	16	19	
	13	19	5	14	21	1	7		12	1	5	7		8	9	12	13	5	2	15	
	18	9	2	16	4	17	3		10	3	4	9		7	14	4	11	1	10	6	
	20	14	2	17	8	4	21		2	12	11	3		19	8	17	2	21	16	7	
	10	15	9	13	5	19	12		1	6	8	9		5	9	13	6	15	20	4	
3	1	11	6	16	18	7	5	10	4	7	3	18	14	11	12	1	10				
SWH Spring VT							HDWH Spring VT				HRS Spring VT										


**Spring Wheat Breeding Trials**

This map includes only the portion of the nursery that contains the Variety Testing Trials.  
 These trials are planted first in the nursery.

2008 WSU Spring WHEAT Varietal Trial

		BARLEY or YECORA ROJO								
		1	2	3	4	5	6	7	8	9
1	3	10	20	18	13	8	15	5	7	18
2	1	15	14	9	19	11	21	7	13	6
3	1	9	2	2	5	10	11	6	17	9
4	6	13	16	4	14	15	16	8	14	1
5	6	5	8	4	21	6	10	19	8	2
6	7	19	4	17	1	12	12	20	13	4
7	7	12	21	3	7	20	3	20	4	4
		YECORA ROJO								
1	5	1	2	10	3	8	9	2	3	1
2	10	6	12	3	4	2	12	10	11	7
3	4	8	11	9	9	11	5	6	7	7
4	7	9	3	4	7	8	8	6	8	4
		YECORA ROJO								
1	3	5	19	7	8	21	13	1	15	16
2	18	9	8	14	9	20	11	9	20	2
3	14	13	17	4	12	18	9	18	10	14
4	11	6	2	11	13	17	21	7	3	14
5	12	15	5	5	5	3	5	8	7	3
6	1	10	2	1	2	16	19	6	19	12
7	10	4	16	6	15	19	17	19	4	4
		YECORA ROJO								

FOR MORE INFORMATION.....

JOHN KUEHNER (509)335-4470  
 Department of Crop and Soil Sciences  
 PO Box 646420  
 Pullman, WA 99164-6420



Planting Dates

		SOFT WHITE	
Almira	22-Apr		
Bickleton	17-Apr		
Connell	12-Mar		
Dayton	15-Apr		
Endicott	3-Apr		
Farmington	5-May		
H. Heaven	10-Mar		
Lamont	15-Apr		
Lind	18-Mar		
Mayview	29-Apr		
Moses Lake	31-Mar		
Pullman	17-Apr		
Reardan	28-Apr		
St. John	22-Apr		
Walla Walla	12-Mar		

SOFT WHITE

HARD WHITE

HARD RED

	SOFT WHITE
	CLUB
	HARD WHITE
	HARD RED

RANDOMIZED PLOTS:  
 3 REPLICATIONS

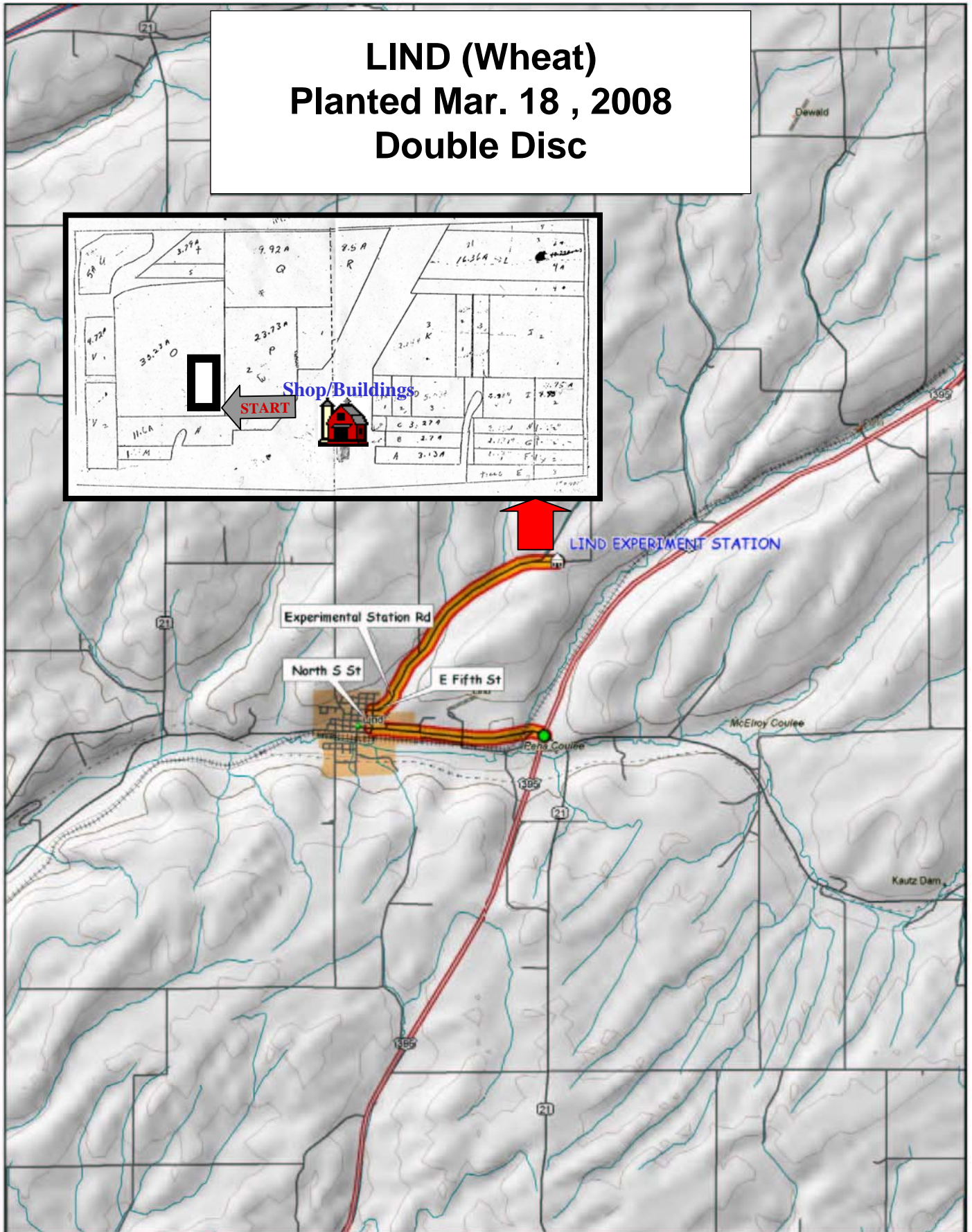
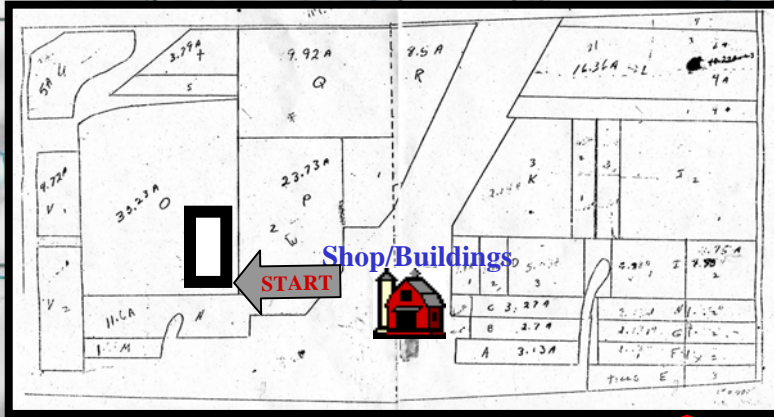
#	SOFT WHITE
1	ALPOWA
2	ZAK
3	LOUISE
4	WAKANZ
5	NICK
6	BZ604-026
7	WHIT
8	WA008039
9	WA008041
10	WA008046
11	WA008042
12	WA008090
13	WA008089
14	WA008058
15	WA008059
16	ALTURAS
17	UI CATALDO
18	EDEN
19	WA008049
20	WA008047
21	WA008082

#	HARD RED
1	SCARLET
2	HOLLIS
3	TARA 2002
4	KELSE
5	WA008026
6	WA008027
7	WA008030
8	WA008033
9	WA008034
10	WA008077
11	JEFFERSON
12	UI WINCHESTER
13	WESTBRED 926
14	HANK
15	BZ901-717
16	JEDD
17	VOLT
18	NPBHR70
19	RSI20035
20	BUCK PRONTO
21	AP-81

#	HARD WHITE
1	MACON
2	OTIS
3	WA008037
4	WA008078
5	WA008079
6	WA008080

#	HARD WHITE
7	WA008081
8	LOLO
9	BLANCA GRANDE
10	RSI10348W
11	07M SP1
12	CLEAR WHITE

# LIND (Wheat) Planted Mar. 18, 2008 Double Disc



© 2001 DeLorme. Topo USA® 3.0

Zoom Level: 11-0 Datum: WGS84

Scale 1 : 100 000

1" = 2 500'

