

2008 CONNELL

YECORA ROJO	18	6	17	9	1	2	4	3	1	11	7	15	16	2	14	3	12	4	YECORA ROJO	
	5	7	13	14	8	19	20	2	10	4	6	1	20	18	10	7	6	19		
	15	21	11	16	10	12	3	9	12	5	8	13	11	9	21	5	8	17		
	8	11	10	15	6	12	20	8	2	11	6	21	20	18	17	3	16	19		
	13	19	5	14	21	1	7	12	1	5	7	8	9	12	13	5	2	15		
	18	9	2	16	4	17	3	10	3	4	9	7	14	4	11	1	10	6		
	20	14	2	17	8	4	21	2	12	11	3	19	8	17	2	21	16	7		
	10	15	9	13	5	19	12	1	6	8	9	5	9	13	6	15	20	4		
	3	1	11	6	16	18	7	5	10	4	7	3	18	14	11	12	1	10		
	SWH Spring VT							HDWH Spring VT				HRS Spring VT				3-Passes	4-Passes	4-Passes	12-Passes	

2008 WSU Spring WHEAT Varietal Trial

BARLEY or YECORA ROJO									
1	3	20	18	13	8	15	5	18	9
2	10	14	9	19	11	21	7	6	17
3	1	15	2	5	10	11	13	14	8
4	11	9	2	14	15	16	10	12	3
5	6	13	16	4	6	12	20	19	20
6	16	18	17	3	7	20	4	3	2
7	7	12	4	1	1	3	2	4	4
8	19	12	17	7	2	4	3	1	11
9	7	4	17	3	1	11	7	7	7
10	12	3	1	7	8	2	11	6	6
11	4	21	3	7	21	5	8	17	19
12	12	3	9	7	13	11	9	21	5
13	7	3	9	7	8	9	12	13	5
14	19	7	14	4	11	1	10	6	6
15	5	8	17	2	21	16	7	4	4
16	18	14	11	12	1	10	6	4	4
17	11	12	1	10	6	4	4	4	4
18	4	7	9	9	15	16	2	14	3
19	10	4	10	6	19	19	7	6	19
20	7	4	10	6	19	19	7	6	19
21	4	4	10	6	19	19	7	6	19
22	4	4	10	6	19	19	7	6	19
23	4	4	10	6	19	19	7	6	19
24	4	4	10	6	19	19	7	6	19
25	4	4	10	6	19	19	7	6	19
26	4	4	10	6	19	19	7	6	19
27	4	4	10	6	19	19	7	6	19
28	4	4	10	6	19	19	7	6	19
29	4	4	10	6	19	19	7	6	19
30	4	4	10	6	19	19	7	6	19
31	4	4	10	6	19	19	7	6	19
32	4	4	10	6	19	19	7	6	19
33	4	4	10	6	19	19	7	6	19
34	4	4	10	6	19	19	7	6	19
35	4	4	10	6	19	19	7	6	19
36	4	4	10	6	19	19	7	6	19
37	4	4	10	6	19	19	7	6	19
38	4	4	10	6	19	19	7	6	19
39	4	4	10	6	19	19	7	6	19
40	4	4	10	6	19	19	7	6	19
41	4	4	10	6	19	19	7	6	19
42	4	4	10	6	19	19	7	6	19
43	4	4	10	6	19	19	7	6	19
44	4	4	10	6	19	19	7	6	19
45	4	4	10	6	19	19	7	6	19
46	4	4	10	6	19	19	7	6	19
47	4	4	10	6	19	19	7	6	19
48	4	4	10	6	19	19	7	6	19
49	4	4	10	6	19	19	7	6	19
50	4	4	10	6	19	19	7	6	19
51	4	4	10	6	19	19	7	6	19
52	4	4	10	6	19	19	7	6	19
53	4	4	10	6	19	19	7	6	19
54	4	4	10	6	19	19	7	6	19
55	4	4	10	6	19	19	7	6	19
56	4	4	10	6	19	19	7	6	19
57	4	4	10	6	19	19	7	6	19
58	4	4	10	6	19	19	7	6	19
59	4	4	10	6	19	19	7	6	19
60	4	4	10	6	19	19	7	6	19
61	4	4	10	6	19	19	7	6	19
62	4	4	10	6	19	19	7	6	19
63	4	4	10	6	19	19	7	6	19
64	4	4	10	6	19	19	7	6	19
65	4	4	10	6	19	19	7	6	19
66	4	4	10	6	19	19	7	6	19
67	4	4	10	6	19	19	7	6	19
68	4	4	10	6	19	19	7	6	19
69	4	4	10	6	19	19	7	6	19
70	4	4	10	6	19	19	7	6	19
71	4	4	10	6	19	19	7	6	19
72	4	4	10	6	19	19	7	6	19
73	4	4	10	6	19	19	7	6	19
74	4	4	10	6	19	19	7	6	19
75	4	4	10	6	19	19	7	6	19
76	4	4	10	6	19	19	7	6	19
77	4	4	10	6	19	19	7	6	19
78	4	4	10	6	19	19	7	6	19
79	4	4	10	6	19	19	7	6	19
80	4	4	10	6	19	19	7	6	19
81	4	4	10	6	19	19	7	6	19
82	4	4	10	6	19	19	7	6	19
83	4	4	10	6	19	19	7	6	19
84	4	4	10	6	19	19	7	6	19
85	4	4	10	6	19	19	7	6	19
86	4	4	10	6	19	19	7	6	19
87	4	4	10	6	19	19	7	6	19
88	4	4	10	6	19	19	7	6	19
89	4	4	10	6	19	19	7	6	19
90	4	4	10	6	19	19	7	6	19
91	4	4	10	6	19	19	7	6	19
92	4	4	10	6	19	19	7	6	19
93	4	4	10	6	19	19	7	6	19
94	4	4	10	6	19	19	7	6	19
95	4	4	10	6	19	19	7	6	19
96	4	4	10	6	19	19	7	6	19
97	4	4	10	6	19	19	7	6	19
98	4	4	10	6	19	19	7	6	19
99	4	4	10	6	19	19	7	6	19
100	4	4	10	6	19	19	7	6	19

FOR MORE INFORMATION.....

JOHN KUEHNER (509)335-4470
 Department of Crop and Soil Sciences
 PO Box 646420
 Pullman, WA 99164-6420



Planting Dates	
Almira	22-Apr
Bickleton	17-Apr
Connell	12-Mar
Dayton	15-Apr
Endicott	3-Apr
Farmington	5-May
H. Heaven	10-Mar
Lamont	15-Apr
Lind	18-Mar
Mayview	29-Apr
Moses Lake	31-Mar
Pullman	17-Apr
Reardan	28-Apr
St. John	22-Apr
Walla Walla	12-Mar

	SOFT WHITE
	CLUB
	HARD WHITE
	HARD RED

RANDOMIZED PLOTS:
 3 REPLICATIONS

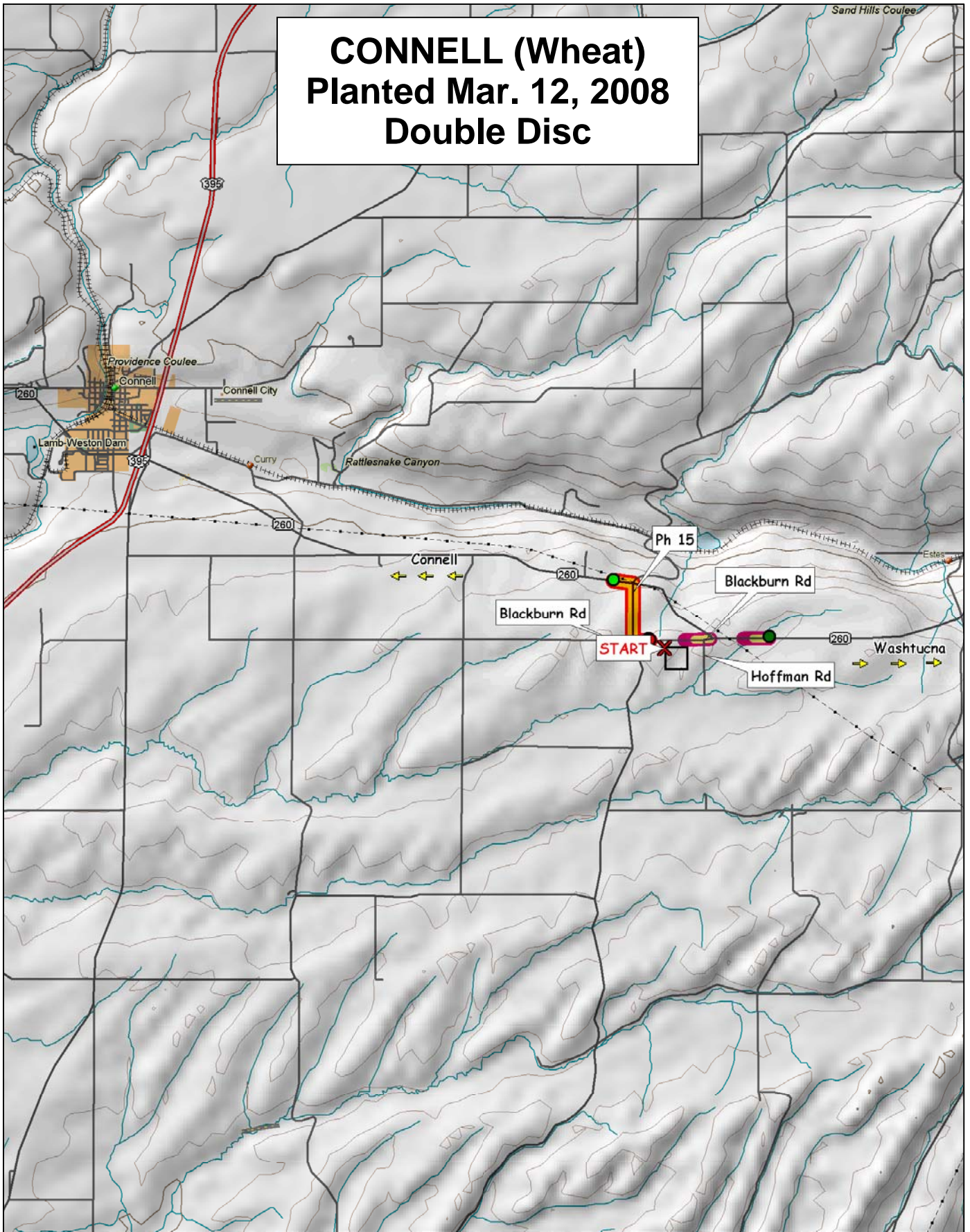
#	SOFT WHITE
1	ALPOWA
2	ZAK
3	LOUISE
4	WAKANZ
5	NICK
6	BZ604-026
7	WHIT
8	WA008039
9	WA008041
10	WA008046
11	WA008042
12	WA008090
13	WA008089
14	WA008058
15	WA008059
16	ALTURAS
17	UI CATALDO
18	EDEN
19	WA008049
20	WA008047
21	WA008082

#	HARD RED
1	SCARLET
2	HOLLIS
3	TARA 2002
4	KELSE
5	WA008026
6	WA008027
7	WA008030
8	WA008033
9	WA008034
10	WA008077
11	JEFFERSON
12	UI WINCHESTER
13	WESTBRED 926
14	HANK
15	BZ901-717
16	JEDD
17	VOLT
18	NPBHR70
19	RSI20035
20	BUCK PRONTO
21	AP-81

#	HARD WHITE
1	MACON
2	OTIS
3	WA008037
4	WA008078
5	WA008079
6	WA008080

#	HARD WHITE
7	WA008081
8	LOLO
9	BLANCA GRANDE
10	RSI10348W
11	07M SP1
12	CLEAR WHITE

CONNELL (Wheat) Planted Mar. 12, 2008 Double Disc



© 2001 DeLorme. Topo USA® 3.0

Zoom Level: 11-0 Datum: WGS84

Scale 1 : 100,000

1" = 1.58 mi

