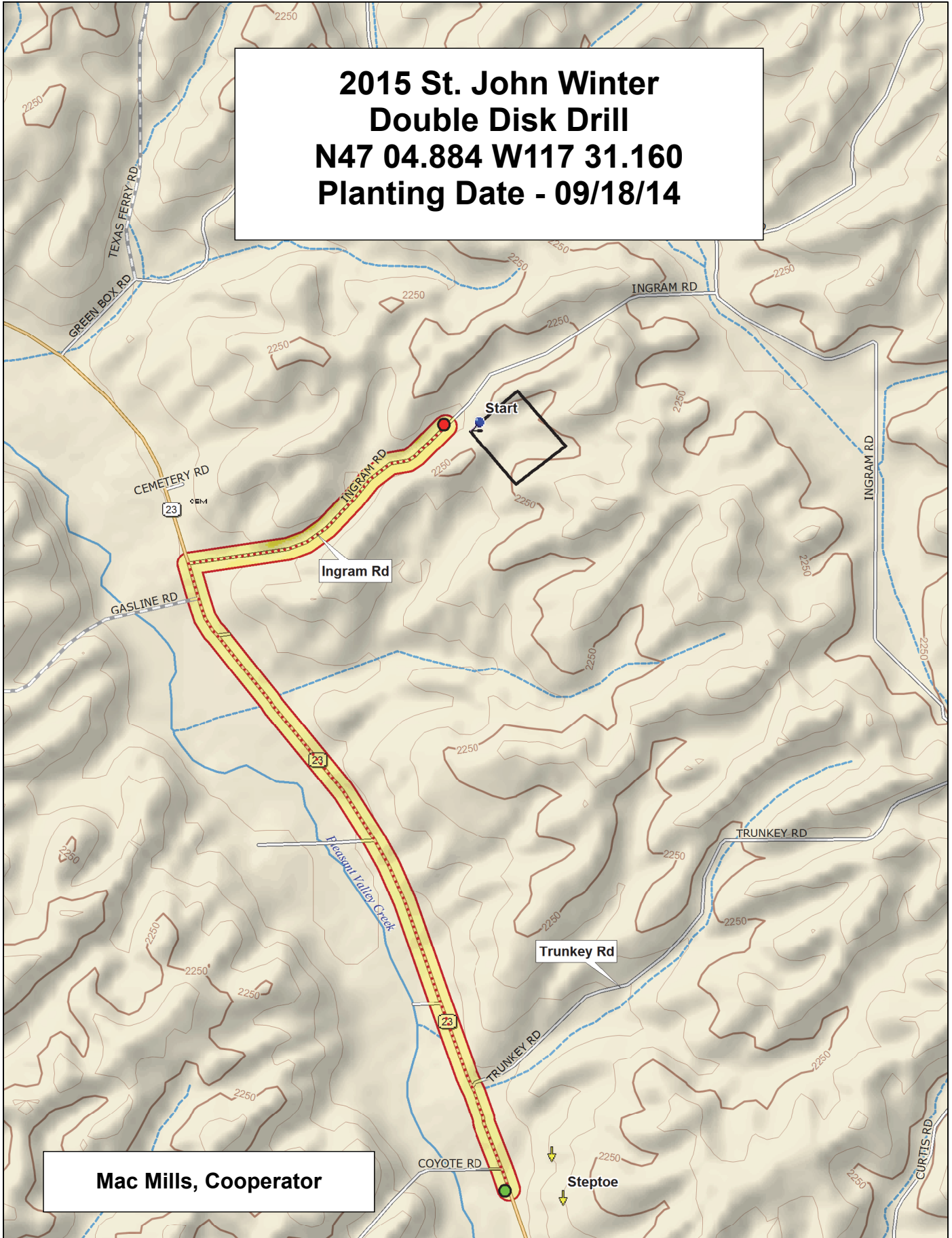


**2015 St. John Winter
Double Disk Drill
N47 04.884 W117 31.160
Planting Date - 09/18/14**



Mac Mills, Cooperator

2015 Soft White Winter Wheat Trial, St. John

9	UI-WSU Huffman (IDN-03-29902A)	Puma	SY 107	IDN-01-10704A	OR2090473	IDN-06-18102A	WB-528	Xerpha	WB 523	WB 456	Skiles	MelaCL+ (WA 8155)	AP700 CL	Coda	Legion	Cara	WA 8177	ARS-Crescent	Mary	ORCF-103
8	IDO1005	WA 8234	Masami	ARS-Chrysal	IDN-02-29001A	ARS20060123-31C	LOR-978	Madsen	ARS20060126-35C	IDO1108DH	ORCF-102	DAS 3	Bruehl	WA 8212	Otto	LWW12-7105	WA 8169	Rosalyn (OR2071071)	WB-1070CL	WA 8232
7	Stephens	WA 8187	WB 1604	Bobtail	WA 8235	4J0713366C	SY Ovation	DAS 4	CuriosityCL+ (WA 8143)	OR2080641	Eltan	LCS-Artdeco	WA 8233	ARS010669-2C	WB1529	ARS010263-10-3C	ARS-Selbu	WA 8206	WB-Junction	Kaseberg
6	LWW12-7105	WB 1604	AP700 CL	OR2080641	IDO1005	WB 456	WB-Junction	Mary	SY 107	SY Ovation	Bruehl	LOR-978	Eltan	ARS-Selbu	WA 8187	ARS20060126-35C	OR2090473	ARS010263-10-3C	WB1529	Xerpha
5	IDO1108DH	WB-1070CL	WA 8212	Bobtail	Legion	ARS-Crescent	Skiles	Masami	UI-WSU Huffman (IDN-03-29902A)	4J0713366C	WA 8234	WA 8177	WA 8206	WB 523	IDN-01-10704A	ORCF-103	Rosalyn (OR2071071)	DAS 4	Puma	IDN-02-29001A
4	DAS 3	Stephens	WA 8232	ARS010669-2C	MelaCL+ (WA 8155)	WA 8169	ARS-Chrysal	ORCF-102	Coda	CuriosityCL+ (WA 8143)	Cara	LCS-Artdeco	WB-528	Kaseberg	Madsen	IDN-06-18102A	ARS20060123-31C	Otto	WA 8233	WA 8235
3	WB 1604	Eltan	Madsen	DAS 3	WA 8206	IDO1005	OR2090473	Mary	WA 8232	DAS 4	WB-528	ARS-Selbu	WA 8177	ARS-Chrysal	UI-WSU Huffman (IDN-03-29902A)	Stephens	Rosalyn (OR2071071)	LCS-Artdeco	Bruehl	AP700 CL
2	ARS010263-10-3C	SY 107	ORCF-103	IDN-06-18102A	OR2080641	WB-Junction	Xerpha	Puma	IDO1108DH	WA 8233	LOR-978	Kaseberg	WB 523	ARS-Crescent	ARS010669-2C	Coda	4J0713366C	WB-1070CL	WA 8234	Otto
1	Bobtail	WB1529	ARS20060123-31C	WB 456	ORCF-102	LWW12-7105	MelaCL+ (WA 8155)	SY Ovation	IDN-02-29001A	WA 8187	WA 8212	WA 8235	Skiles	WA 8169	ARS20060126-35C	IDN-01-10704A	Cara	CuriosityCL+ (WA 8143)	Masami	Legion
	1	2	3	4	5	6	7	8	9	10	11	12	13	14	15	16	17	18	19	20

Entry	Name
1	Otto
2	Cara
3	Madsen
4	Eltan
5	Xerpha
6	Stephens
7	Bruehl
8	ARS-Crescent
9	ARS-Selbu
10	Puma
11	Coda
12	Masami
13	ORCF-102
14	ORCF-103
15	WB-Junction
16	WB1529
17	SY Ovation
18	SY 107
19	CuriosityCL+ (WA 8143)
20	MelaCL+ (WA 8155)

Entry	Name
21	OR2080641
22	OR2090473
23	WA 8169
24	DAS 3
25	DAS 4
26	IDO1108DH
27	IDO1005
28	IDN-01-10704A
29	IDN-02-29001A
30	IDN-06-18102A
31	4J0713366C
32	ARS20060123-31C
33	ARS-Chrysal
34	Bobtail
35	Rosalyn (OR2071071)
36	Skiles
37	Kaseberg
38	Mary
39	WB-528
40	WB 456

Entry	Name
41	WB 523
42	WB-1070CL
43	WB 1604
44	LCS-Artdeco
45	LOR-978
46	LWW12-7105
47	Legion
48	AP700 CL
49	UI-WSU Huffman (IDN-03-29902A)
50	ARS010669-2C
51	ARS010263-10-3C
52	ARS20060126-35C
53	WA 8235
54	WA 8206
55	WA 8212
56	WA 8232
57	WA 8233
58	WA 8234
59	WA 8177
60	WA 8187

3 Replications, Alpha-Lattice Design

<http://variety.wsu.edu>

	Common
	Club

Planting Date
18-Sep

