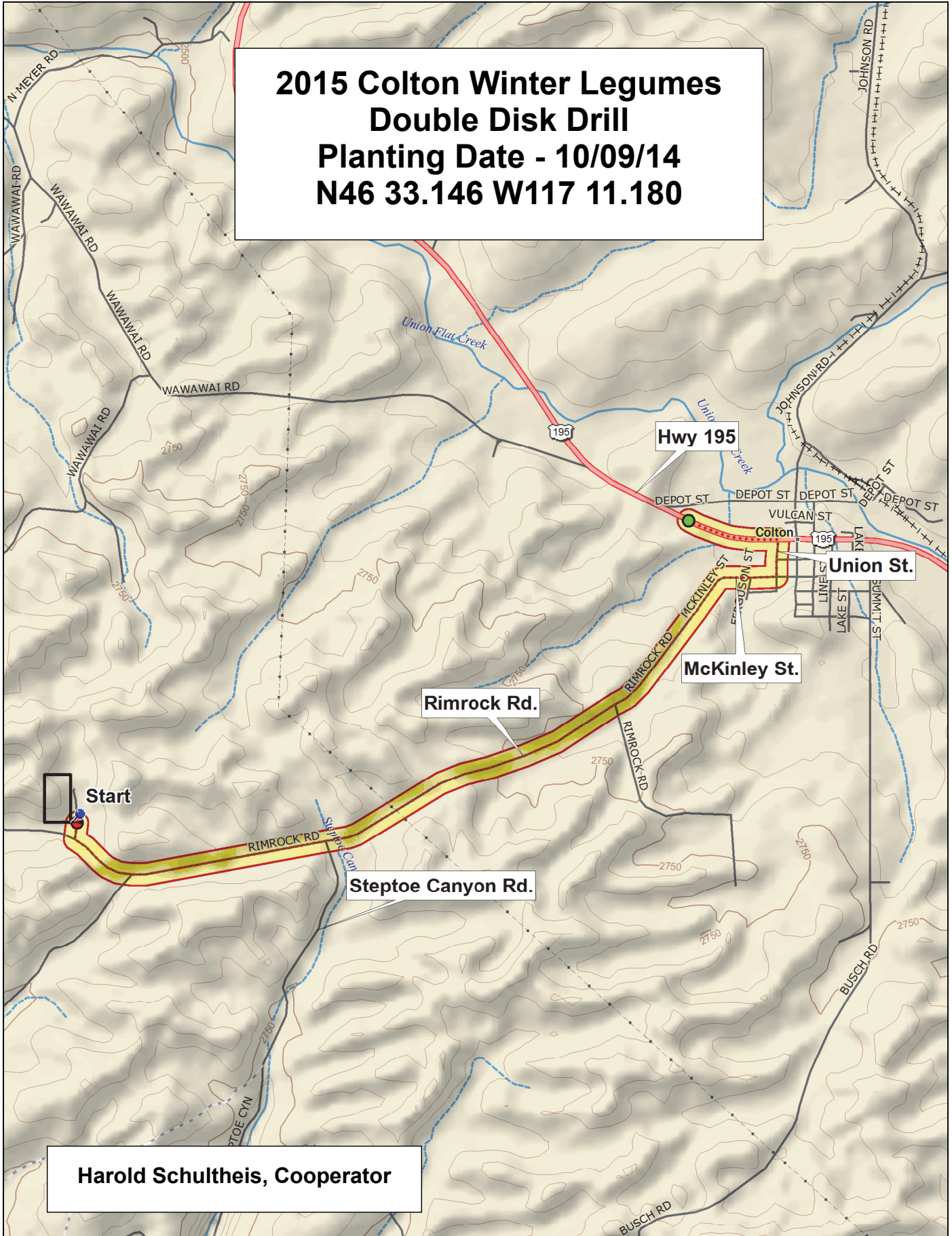
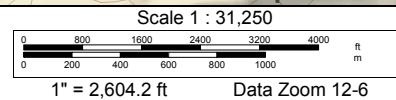
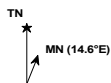


**2015 Colton Winter Legumes
 Double Disk Drill
 Planting Date - 10/09/14
 N46 33.146 W117 11.180**



Harold Schultheis, Cooperator



2015 Winter Pea Variety Trial, Colton

Peas

| | | | | | | | | | | | | |
|---|----------|--------------|--------------|--------------|--------------|--------------|--------------|-------------|--------------|--------------|----------|--------|
| 6 | 1434 125 | PS11300287W | PS11300069W | PS03101269W | PS12300080W | PS123000134W | PS06300024W | PS11300289W | PS12300072W | PS11300087W | 1434 377 | |
| 5 | 1434 114 | Windham | Pro 112-7127 | Pro 122-7116 | Pro 124-7130 | Specter | Koyote | PS12300046W | PS07300092W | Lynx | 1434 371 | |
| 4 | 1434 89 | Pro 122-7116 | PS12300046W | Pro 124-7146 | PS11300287W | PS06300024W | Pro 124-7130 | Koyote | PS03101269W | PS12300072W | 1434 369 | |
| 3 | 1434 87 | PS11300087W | PS12300080W | PS10300134W | PS11300069W | Windham | PS07300092W | PS11300289W | Pro 112-7127 | PS12300032W | 1434 361 | |
| 2 | 1434 83 | PS12300072W | PS11300069W | Koyote | PS11300087W | Specter | PS11300287W | PS12300032W | PS12300046W | PS11300289W | 1434 160 | |
| 1 | 1434 5 | Pro 112-7127 | PS10300134W | PS03101269W | Pro 122-7116 | Pro 122-7146 | PS12300080W | Windham | Lynx | Pro 124-7130 | 1434 144 | |
| | Border | 1 | 2 | 3 | 4 | 5 | 6 | 7 | 8 | 9 | 10 | Border |

3 Replications, Alpha-Lattice Design

<http://variety.wsu.edu>

Planting Date: 10-October, 2014

| | |
|------------------|---------------------|
| 2015 Winter Peas | 2015 Winter Lentils |
|------------------|---------------------|

1 10 1 5

| Entry Name |
|-----------------|
| 1 Specter |
| 2 Windham |
| 3 PS03101269W |
| 4 Lynx |
| 5 PS06300024W |
| 6 PS11300087W |
| 7 PS11300287W |
| 8 PS11300289W |
| 9 PS11300069W |
| 10 PS12300032W |
| 11 PS12300046W |
| 12 PS12300072W |
| 13 PS12300080W |
| 14 PS10300134W |
| 15 PS07300092W |
| 16 Pro 112-7127 |
| 17 Pro 122-7116 |
| 18 Pro 124-7146 |
| 19 Pro 124-7130 |
| 20 Koyote |

2015 Winter Lentil Variety Trial, Colton

Lentils

| | | | | | | | |
|---|---------|--------------|--------------|--------------|--------------|--------------|----------|
| 6 | 1444 45 | LC1160W0017W | Morton | LC1160W0030W | LC1260W0008W | LC1160W0026W | 1444 109 |
| 5 | 1444 38 | LC1260W0010W | LC1160W0080W | LC05600512WT | LC1260W0004W | LC1160W0078W | 1444 106 |
| 4 | 1444 37 | LC1160W0017W | LC1160W0080W | LC1260W0010W | LC05600512WT | LC1260W0008W | 1444 104 |
| 3 | 1444 24 | LC1260W0004W | Morton | LC1160W0026W | LC1160W0078W | LC1160W0030W | 1444 87 |
| 2 | 1444 20 | LC1260W0010W | LC1160W0080W | LC1260W0004W | LC1160W0080W | LC1160W0078W | 1441 63 |
| 1 | 1444 9 | Morton | LC05600512WT | LC1160W0017W | LC1160W0026W | LC1160W0030W | 1444 61 |
| | Border | 1 | 2 | 3 | 4 | 5 | Border |

| Entry | Name |
|-------|--------------|
| 1 | Morton |
| 2 | LC05600512WT |
| 3 | LC1160W0017W |
| 4 | LC1160W0026W |
| 5 | LC1160W0030W |
| 6 | LC1160W0078W |
| 7 | LC1160W0080W |
| 8 | LC1260W0004W |
| 9 | LC1260W0008W |
| 10 | LC1260W0010W |

3 Replications, Alpha-Lattice Design

<http://variety.wsu.edu>

Planting Date: 10-October, 2014

