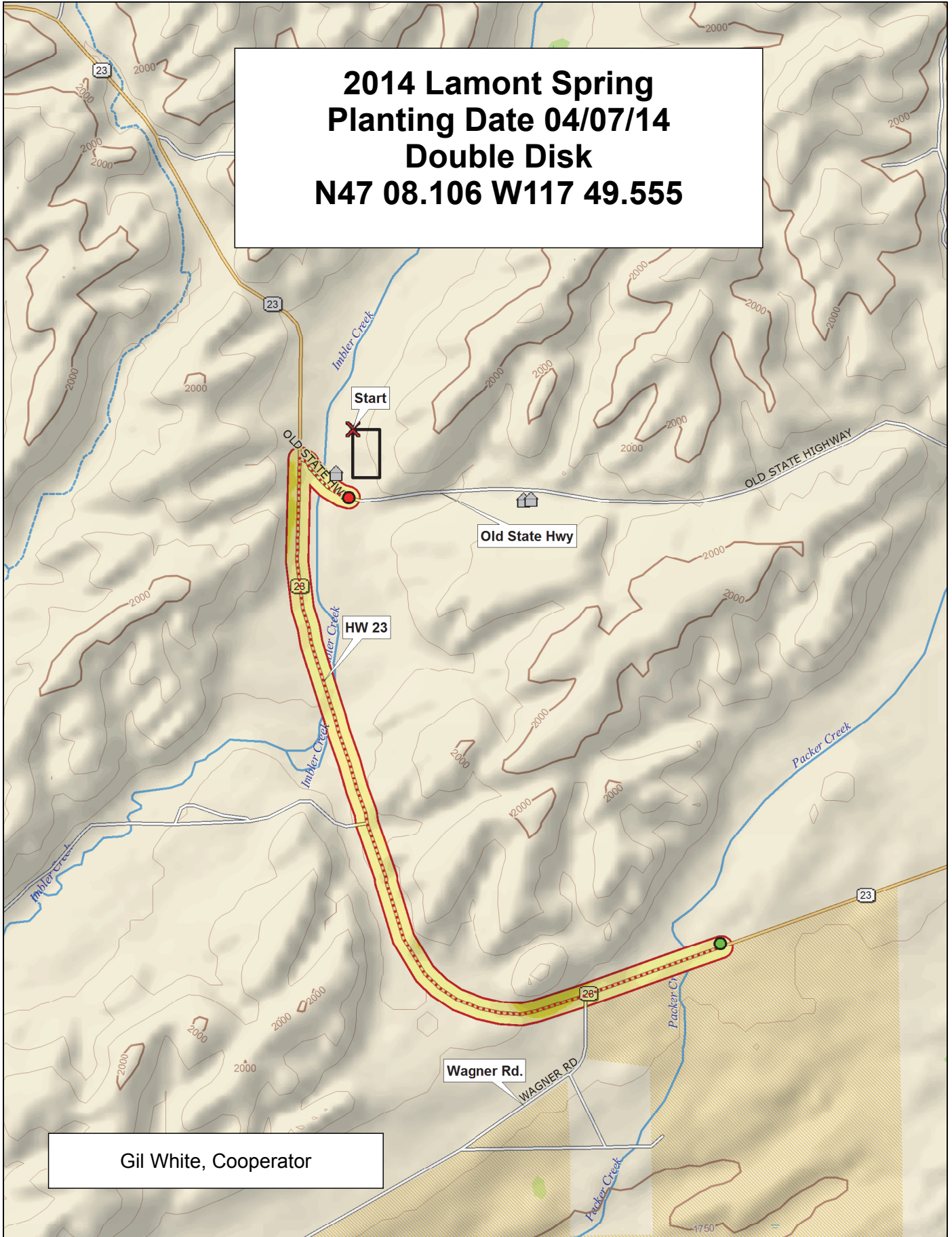
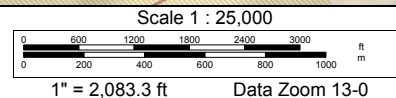
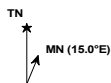


**2014 Lamont Spring
 Planting Date 04/07/14
 Double Disk
 N47 08.106 W117 49.555**



Gil White, Cooperator



2014 Barley Trial, Lamont

9	Tradition	X07G30-T131	Lenetah	X0626-T229	09WA-203.21	09WA-265.12	CDC Meredith	AC Metcalfe	Baronesse	CDC Copeland	09WA-203.36	LCS-Lamari	Muir (07WA-601.6)	10WA-113.16
8	LCS-Vespa (LCS LN09-0920)	Salute	09WA-203.24	2008NZ013	2Ab09-X06F058HL-31	2AB09X06F08 4-51	10WA-105.33	Lyon (09WA-316.K)	10WA-113.12	LCS-Overture	2Ab04-X01084-27	X06G07-T43	2Ab07-X31098-31	LCS-Genie
7	10WA-106.18	Bob	Champion	2008NZ006	2Ab-X04M219-46	Harrington	RWA 1758	09WA-228.13	X06G03-T148	Meresse	X05013-T1	2008NZ004	09WA-265.5	LCS-Odyssey
6	Baronesse	LCS-Vespa (LCS LN09-0920)	2Ab04-X01084-27	X07G30-T131	09WA-203.36	AC Metcalfe	09WA-265.5	X0626-T229	Bob	2Ab07-X31098-31	09WA-205.24	2Ab-X04M219-46	Lyon (09WA-316.K)	LCS-Lamari
5	10WA-105.33	Meresse	2008NZ006	Salute	10WA-113.12	RWA 1758	2008NZ004	Champion	CDC Meredith	LCS-Genie	LCS-Overture	X06G03-T148	10WA-113.16	2AB09X06F08 4-51
4	Muir (07WA-601.6)	Lenetah	Tradition	X06G07-T43	2008NZ013	CDC Copeland	09WA-265.12	LCS-Odyssey	09WA-228.13	Harrington	X05013-T1	10WA-106.18	2Ab09-X06F058HL-31	09WA-203.21
3	Harrington	Meresse	2Ab09-X06F058HL-31	Lenetah	X06G07-T43	X06G03-T148	09WA-265.12	10WA-113.12	Lyon (09WA-316.K)	LCS-Genie	09WA-228.13	2Ab04-X01084-27	Tradition	LCS-Lamari
2	Bob	09WA-265.5	2008NZ006	Champion	09WA-203.21	2Ab-X04M219-46	Salute	10WA-113.16	AC Metcalfe	09WA-203.36	CDC Meredith	X05013-T1	LCS-Odyssey	10WA-105.33
1	X07G30-T131	Baronesse	LCS-Overture	09WA-203.24	10WA-106.18	X0626-T229	CDC Copeland	RWA 1758	09WA-265.12	LCS-Vespa (LCS LN09-0920)	2AB09X06F08 4-51	Muir (07WA-601.6)	2008NZ013	2Ab07-X31098-31

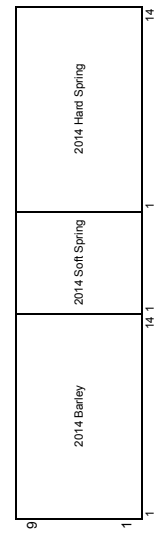
Entry	Name
1	CDC Copeland
2	CDC Meredith
3	AC Metcalfe
4	2008NZ006
5	2008NZ013
6	2008NZ004
7	Tradition
8	Lyon (09WA-316.K)
9	Muir (07WA-601.6)
10	Champion
11	Baronesse
12	Bob
13	Harrington
14	Lenetah
15	09WA-228.13
16	09WA-203.24
17	10WA-113.12
18	10WA-113.16
19	10WA-106.18
20	10WA-105.33
21	X06G03-T148

Entry	Name
22	09WA-203.36
23	09WA-203.21
24	09WA-265.5
25	X06G07-T43
26	X05013-T1
27	X07G30-T131
28	2Ab04-X01084-27
29	2Ab07-X031088-31
30	2Ab07-X04M219-46
31	2AB09X06F084-51
32	2AB09-X06F058HL-31
33	LCS-Vespa (LCS LN09-0920)
34	LCS-Genie
35	LCS-Overture
36	LCS-Lamari
37	LCS-Odyssey
38	Salute
39	Meresse
40	RWA 1758
41	09WA-265.12
42	X0626-T229

3 Replications, Alpha-Lattice Design

<http://variety.wsu.edu>

Covered	Planting Date
Hullless	7-Apr



2014 Soft White Spring Trial, Lamont

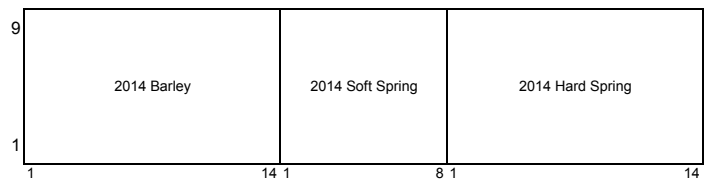
	9	Diva	WA 8193	WA 8189	WA 8214	Louise	WA 8215	Nick	WB6341
	8	JD	Babe	UI-Stone (IDO599)	WA 8224	Alpowa	Alturas	WA 8195	Louise-G2
	7	WA 8213	IDO852	IDO851	Louise-0W	Zak	WB-1035CL+	WA 8162 (Seahawk)	Whit
	6	WB-1035CL+	WA 8195	WA 8214	IDO852	Diva	Zak	JD	WA 8213
	5	Babe	Louise-0W	Alturas	Nick	UI-Stone (IDO599)	WA 8189	WA 8162 (Seahawk)	WB6341
	4	IDO851	WA 8215	WA 8193	Louise-G2	WA 8224	Whit	Louise	Alpowa
	3	WA 8189	Nick	Zak	Alpowa	UI-Stone (IDO599)	Whit	Louise-0W	Louise-G2
	2	WA 8214	WB6341	WA 8224	WA 8213	IDO851	JD	WA 8195	WA 8162 (Seahawk)
	1	Alturas	Diva	WA 8215	WB-1035CL+	WA 8193	IDO852	Louise	Babe
		1	2	3	4	5	6	7	8

Entry	Name
1	Alpowa
2	Alturas
3	Babe
4	Diva
5	IDO851
6	IDO852
7	JD
8	Louise
9	Louise-0W
10	Louise-G2
11	Nick
12	UI-Stone (IDO599)
13	WA 8162 (Seahawk)
14	WA 8189
15	WA 8193
16	WA 8195
17	WA 8213
18	WA 8214
19	WA 8215
20	WA 8224
21	WB6341
22	WB-1035CL+
23	Whit
24	Zak

3 Replications, Alpha-Lattice Design

<http://variety.wsu.edu>

Common	Planting Date
Club	7-Apr



2014 Hard Spring Wheat Trial, Lamont

9	IDO862E	BR7030	Patwin 515	WA 8217	UC1743	Glee (WA 8074)	WB9879CLP	HRS 3361	WA 8216	Bullseye	IDO1202S	Glee-G2	WA 8220	05SB84
8	Glee-0W	WB-Fuzion	Scarlet	Jefferson	Hollis	LCS-Buck Pronto	Soft Svevo	Svevo	SAS W4	SY605 CL	11SB0096	Dayn (WA 8123)	HRS 3419	WA 8219
7	SY Steelhead	WA 8166 (Alum)	LCS-Star (08SB0658-B)	UC1744	Otis	WA 8165	WB-Hartline	UC1741	10SB0087-B	UI-Platinum (ID0694C)	WA 8218	SAS 4B	LCS-Atomo	Kelse
6	05SB84	LCS-Buck Pronto	IDO862E	WA 8217	IDO1202S	HRS 3361	Kelse	Glee-G2	Glee-0W	UI-Platinum (ID0694C)	WA 8165	Scarlet	SAS 4B	SAS W4
5	BR7030	WB9879CLP	UC1743	HRS 3419	SY Steelhead	Bullseye	LCS-Atomo	WB-Fuzion	Hollis	Otis	WA 8166 (Alum)	WA 8216	Glee (WA 8074)	10SB0087-B
4	Soft Svevo	Jefferson	WA 8218	WB-Hartline	UC1744	LCS-Star (08SB0658-B)	WA 8219	WA 8220	11SB0096	Svevo	UC1741	Dayn (WA 8123)	SY605 CL	Patwin 515
3	LCS-Star (08SB0658-B)	LCS-Atomo	UI-Platinum (ID0694C)	WA 8216	UC1744	Kelse	WA 8220	10SB0087-B	HRS 3419	Patwin 515	IDO862E	Soft Svevo	WA 8217	WB9879CLP
2	WA 8218	UC1741	SAS W4	WA 8219	Glee-0W	05SB84	Svevo	SAS 4B	WB-Hartline	SY Steelhead	Otis	HRS 3361	Scarlet	Bullseye
1	BR7030	Dayn (WA 8123)	LCS-Buck Pronto	WB-Fuzion	Glee (WA 8074)	IDO1202S	SY605 CL	11SB0096	Glee-G2	Jefferson	Hollis	UC1743	WA 8165	WA 8166 (Alum)

Entry	Name
1	Dayn (WA 8123)
2	Glee (WA 8074)
3	Glee-0W
4	Glee-G2
5	BR7030
6	Bullseye
7	Hollis
8	IDO1202S
9	UI-Platinum (ID0694C)
10	IDO862E
11	HRS 3361
12	Jefferson
13	Kelse
14	05SB84
15	10SB0087-B
16	11SB0096
17	HRS 3419
18	LCS-Atomo
19	LCS-Buck Pronto
20	LCS-Star (08SB0658-B)
21	Otis

Entry	Name
22	Patwin 515
23	Soft Svevo
24	Svevo
25	SY605 CL
26	UC1741
27	UC1743
28	UC1744
29	WA 8165
30	WA 8166 (Alum)
31	WA 8216
32	WA 8217
33	WA 8218
34	WA 8219
35	WA 8220
36	WB-Fuzion
37	WB-Hartline
38	WB9879CLP
39	SY Steelhead
40	Scarlet
41	SAS 4B
42	SAS W4

3 Replications, Alpha-Lattice Design

<http://variety.wsu.edu>

Red	Planting Date
White	7-Apr
Burnum	

9	2014 Bailey	2014 Soft Spring	2014 Hard Spring
1			

