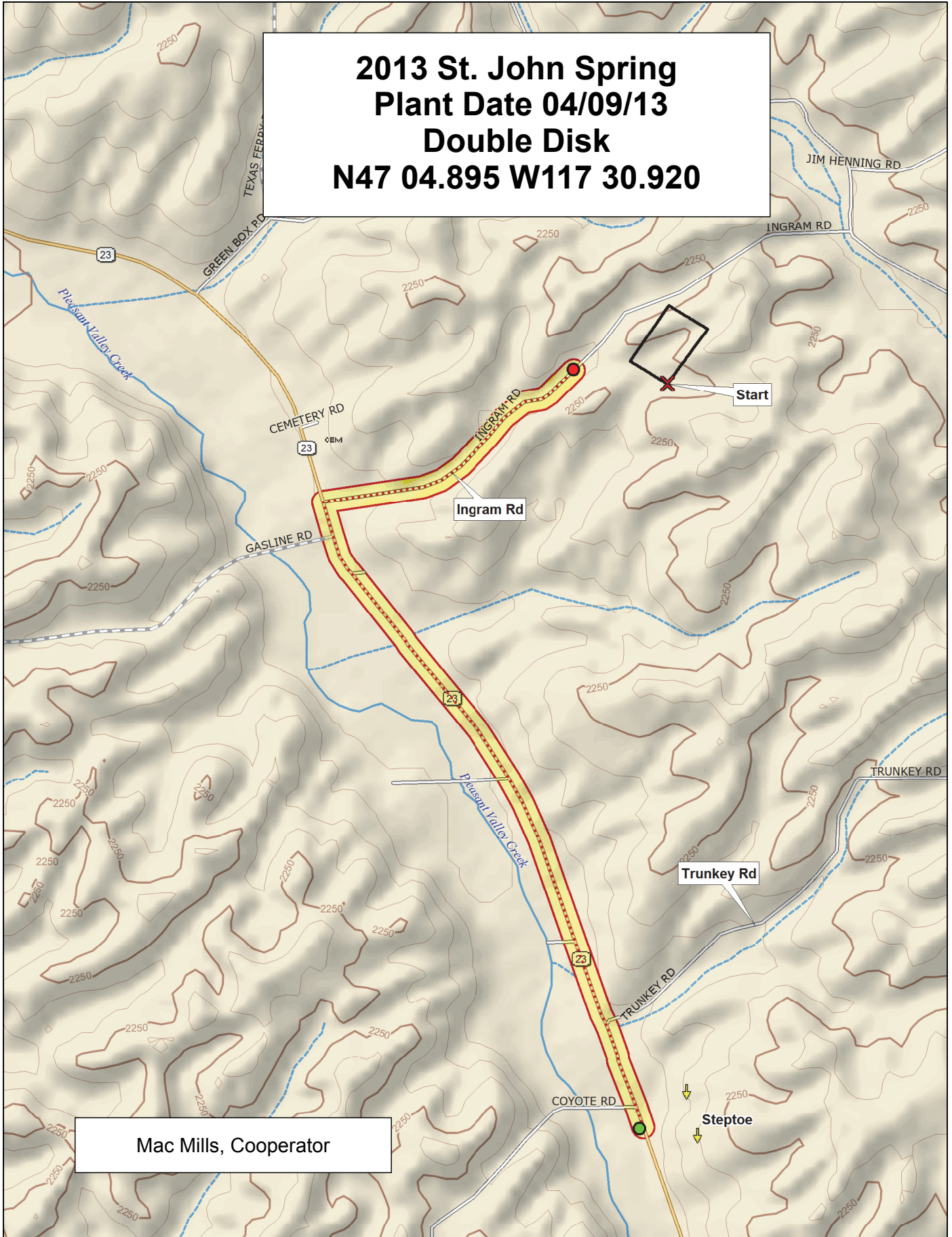


**2013 St. John Spring
 Plant Date 04/09/13
 Double Disk
 N47 04.895 W117 30.920**

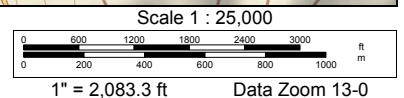


Mac Mills, Cooperator

Data use subject to license.

© DeLorme. Topo North America™ 9.

www.delorme.com



2013 Barley Trial, St. John

9	2Ab07-X01084-27	2Ab09-X06F058HL-182	2008NZ013	07WA-682.1	Vespa (LSC LN09-0920)	09WA-228.13	CDC Copeland	Bob	2Ab07-X031098-31	07MBR1	Overature	Odyssey
8	X06G07-T43	2008NZ004	Champion	Lenetah	X07G19-T270	Muir (07WA-601.6)	Harrington	X05013-T1	2004NZ163	Genie	Baronesse	Tradition
7	09WA-203.24	AC Metcalfe	09WA-231.5	2Ab09-X06F087HL-170	09WA-203.26	Lyon (05WA-316.K)	CDC Meredith	09WA-265.5	2Ab07-X04M219-46	2Ab09-X06F052HL-28	Meresse	09WA-249.9
6	2008NZ013	CDC Meredith	X05013-T1	2Ab07-X04M219-46	09WA-203.24	2Ab09-X06F058HL-182	07WA-682.1	AC Metcalfe	2Ab07-X01084-27	Vespa (LSC LN09-0920)	09WA-249.9	Baronesse
5	2Ab09-X06F052HL-28	09WA-231.5	09WA-228.13	Muir (07WA-601.6)	07MBR1	Tradition	Lyon (05WA-316.K)	Odyssey	CDC Copeland	X06G07-T43	Harrington	2Ab07-X031098-31
4	X07G19-T270	Genie	Meresse	2008NZ004	2004NZ163	09WA-265.5	Lenetah	2Ab09-X06F087HL-170	Overature	Bob	Champion	09WA-203.26
3	09WA-249.9	2Ab07-X031098-31	Champion	2Ab09-X06F087HL-170	AC Metcalfe	Odyssey	Tradition	X07G19-T270	CDC Meredith	07MBR1	Lenetah	2Ab09-X06F058HL-182
2	2008NZ013	2Ab07-X04M219-46	Overature	07WA-682.1	09WA-231.5	Bob	Meresse	Baronesse	2004NZ163	X05013-T1	09WA-265.5	Muir (07WA-601.6)
1	Lyon (05WA-316.K)	09WA-203.24	2Ab07-X01084-27	09WA-203.26	09WA-228.13	CDC Copeland	X06G07-T43	Vespa (LSC LN09-0920)	2Ab09-X06F052HL-28	2008NZ004	Genie	Harrington
	1	2	3	4	5	6	7	8	9	10	11	12

Entry	Name
1	Bob
2	Baronesse
3	Harrington
4	Champion
5	Meresse
6	CDC Copeland
7	CDC Meredith
8	AC Metcalfe
9	Tradition
10	Lenetah
11	Muir (07WA-601.6)
12	Lyon (05WA-316.K)
13	07WA-682.1
14	Vespa (LSC LN09-0920)
15	X06G07-T43
16	X05013-T1
17	X07G19-T270
18	09WA-265.5
19	09WA-231.5
20	09WA-203.26
21	09WA-228.13
22	09WA-203.24
23	09WA-249.9
24	07MBR1

Entry	Name
25	2Ab07-X01084-27
26	2Ab09-X06F052HL-28
27	2Ab07-X031098-31
28	2Ab09-X06F087HL-170
29	2Ab07-X04M219-46
30	2Ab09-X06F058HL-182
31	2004NZ163
32	2008NZ013
33	2008NZ004
34	Genie
35	Overature
36	Odyssey

3 Replications, Alpha-Lattice Design

<http://variety.wsu.edu>

Covered
Hulless

Planting Date
9-Apr

9	2013 Barley	2013 Soft Spring	2013 Hard Spring
1	1	12 1	8 1
	1	12	12

2013 Soft White Spring Trial, St. John

	9	IDO854	Wakanz	Nick	Diva	Louise-0W	WB-1035CL+	WA 8193	WA 8196
	8	Alturas	IDO852	Babe	Louise-G2	Zak	WA 8194	Louise	WA 8195
	7	Whit	UI-Stone (IDO599)	Alpowa	WA 8162	IDO851	ARS03174CS-14	JD	WA 8189
	6	Louise-G2	IDO851	Louise-0W	IDO854	Wakanz	Alpowa	Louise	IDO852
	5	Nick	UI-Stone (IDO599)	Zak	Babe	WA 8196	Alturas	Diva	JD
	4	WA 8194	WA 8162	WA 8189	WA 8193	ARS03174CS-14	WA 8195	Whit	WB-1035CL+
	3	Louise-0W	Zak	Wakanz	WA 8189	Louise-G2	Louise	WA 8196	Whit
	2	Alpowa	WB-1035CL+	Babe	JD	Nick	ARS03174CS-14	WA 8162	Alturas
	1	WA 8194	Diva	IDO851	UI-Stone (IDO599)	WA 8195	IDO852	IDO854	WA 8193
		1	2	3	4	5	6	7	8

Entry	Name
1	Alpowa
2	Babe
3	Diva
4	Nick
5	Wakanz
6	Whit
7	Zak
8	Louise
9	Louise-G2
10	Louise-0W
11	JD
12	Alturas
13	UI-Stone (IDO599)
14	IDO852
15	IDO851
16	IDO854
17	WA 8162
18	WA 8189
19	WA 8193
20	WA 8194
21	WB-1035CL+
22	WA 8195
23	WA 8196
24	ARS03174CS-14

3 Replications, Alpha-Lattice Design

<http://variety.wsu.edu>

Common	Planting Date
Club	9-Apr



2013 Hard Spring Wheat Trial, St. John

	9	WA 8192	AUBR31059W (Roydon)	Bullseye	Patwin 515	Lassik	WA 8163	WB9879CLP	WA 8191	WB Hartline	Scarlet	IDO862E	SY605 CL
	8	Glee-G2	08SB0658-B	WA 8164	Otis	Glee-0W	LCS-Buck Pronto	Jefferson	Kelse	UI-Winchester	IDO1202S	CHBR1481W (Rexon)	Hollis
	7	Glee (WA 8074)	WA 8190	IDO862T	IDO694C	Dayn (WA 8123)	WA 8165	11SB0096	BR7030	LNR10-0551	COI565W	Tara 2002	WA 8166
	6	Otis	LNR10-0551	WA 8192	IDO862E	COI565W	WA 8164	LCS-Buck Pronto	Hollis	UI-Winchester	IDO694C	Jefferson	Glee (WA 8074)
	5	WB9879CLP	AUBR31059W (Roydon)	08SB0658-B	IDO862T	CHBR1481W (Rexon)	Kelse	IDO1202S	BR7030	Glee-0W	WA 8191	11SB0096	Bullseye
	4	WA 8190	Lassik	Dayn (WA 8123)	Glee-G2	WB Hartline	Scarlet	SY605 CL	Patwin 515	Tara 2002	WA 8166	WA 8165	WA 8163
	3	WA 8166	Patwin 515	LNR10-0551	BR7030	WA 8163	Otis	Hollis	Scarlet	WA 8164	WA 8192	Dayn (WA 8123)	11SB0096
	2	Kelse	08SB0658-B	WB Hartline	WB9879CLP	WA 8190	IDO694C	IDO862T	Jefferson	Glee-G2	IDO1202S	LCS-Buck Pronto	Tara 2002
	1	Lassik	Bullseye	WA 8165	CHBR1481W (Rexon)	UI-Winchester	IDO862E	Glee-0W	COI565W	SY605 CL	Glee (WA 8074)	AUBR31059W (Roydon)	WA 8191
		1	2	3	4	5	6	7	8	9	10	11	12

Entry	Name
1	Dayn (WA 8123)
2	Glee (WA 8074)
3	Hollis
4	Kelse
5	Scarlet
6	Tara 2002
7	Otis
8	Jefferson
9	UI-Winchester
10	Lassik
11	Patwin 515
12	WB9879CLP
13	WB Hartline
14	Bullseye
15	LCS-Buck Pronto
16	BR7030
17	SY605 CL
18	WA 8163
19	WA 8165
20	WA 8166
21	WA 8190
22	WA 8191
23	WA 8192
24	IDO1202S

Entry	Name
25	IDO694C
26	IDO862E
27	IDO862T
28	LNR10-0551
29	08SB0658-B
30	11SB0096
31	CHBR1481W (Rexon)
32	AUBR31059W (Roydon)
33	COI565W
34	Glee-0W
35	Glee-G2
36	WA 8164

3 Replications, Alpha-Lattice Design

<http://variety.wsu.edu>

Red
White

Planting Date
9-Apr

2013 Barley	2013 Soft Spring	2013 Hard Spring
9	12 1	8 1
1	1	12

