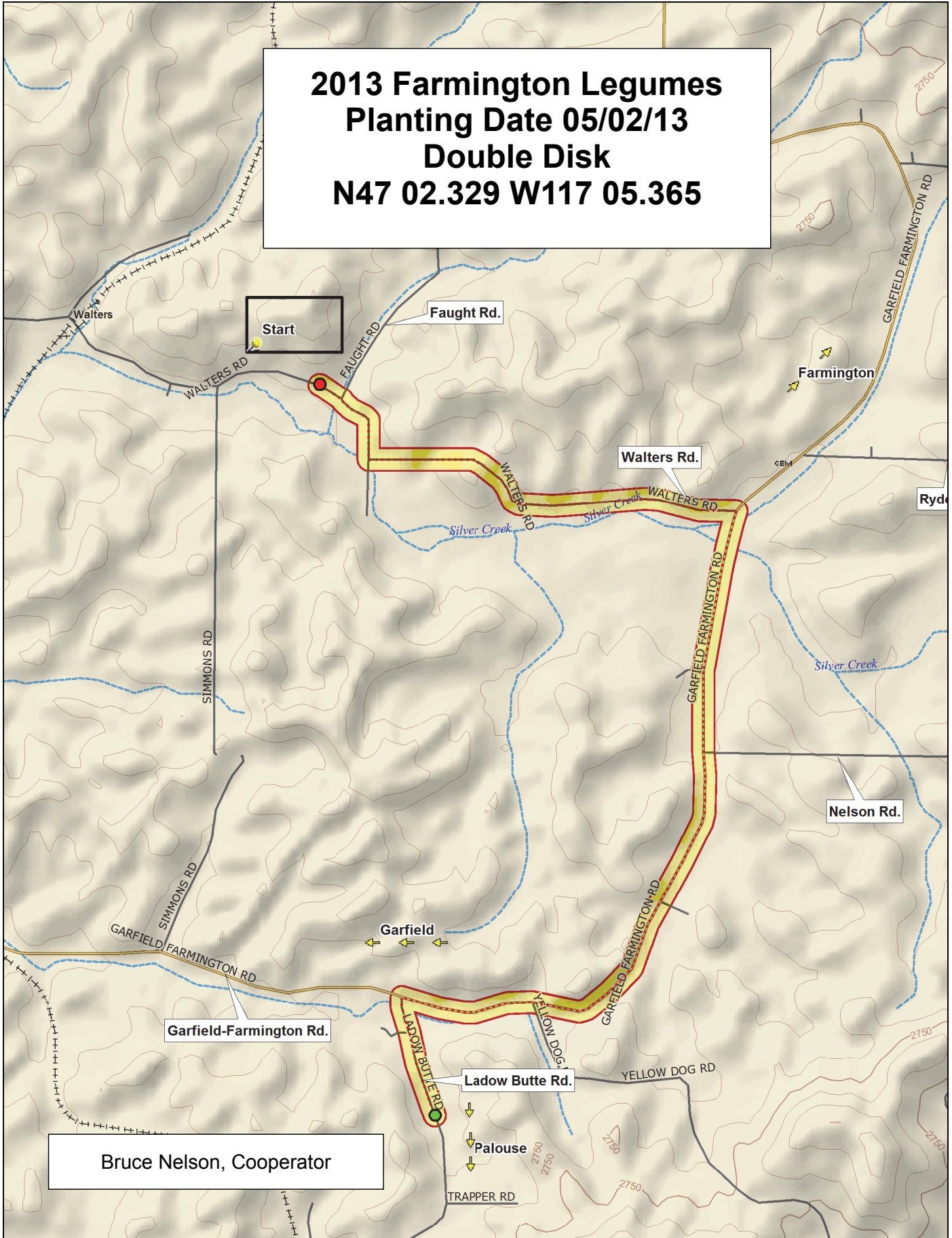
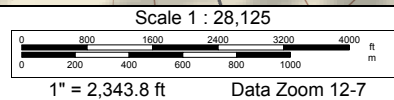
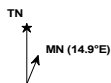


**2013 Farmington Legumes
 Planting Date 05/02/13
 Double Disk
 N47 02.329 W117 05.365**



Bruce Nelson, Cooperator



2013 Pea Variety Trial, Farmington

	6	Ariel	PS07100925	Banner	PS08100582	PS08100133	PS05100736	Pro 091-7137	PS07100470	PS08101022	PS07ND0190	NDP080111	PS07100471
	5	Greenwood	Pro 793	PS03101445	Aragorn	Pro 822	Pro 083-7402	Universal	Columbian	PS05100840	Pro 081-7161	PS08101004	Carousel
	4	Pro 091-7137	PS07100925	PS03101445	PS07ND0190	Pro 793	Carousel	Universal	PS07100471	PS08100133	Pro 083-7402	PS08100582	PS08101004
	3	PS08101022	Columbian	Aragorn	PS05100840	PS07100470	Pro 822	Pro 081-7161	Banner	Ariel	PS05100736	NDP080111	Greenwood
	2	PS07100925	PS08100133	Columbian	PS07100471	PS07100470	Pro 083-7402	PS03101445	PS08101022	Pro 091-7137	Greenwood	Pro 822	PS05100840
	1	Ariel	Universal	PS07ND0190	PS08101004	Carousel	Aragorn	Banner	PS05100736	NDP080111	Pro 793	Pro 081-7161	PS08100582
		1	2	3	4	5	6	7	8	9	10	11	12

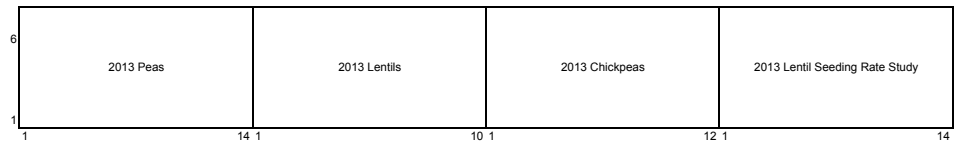
Entry	Name
1	Aragorn
2	Ariel
3	Banner
4	Columbian
5	Greenwood (Pro 7040)
6	Pro 081-7161
7	Pro 091-7137
8	NDP080111
9	PS07ND0190
10	PS03101445
11	PS05100736
12	PS05100840
13	PS07100470
14	PS07100471
15	PS08100133
16	PS08100582
17	Carousel
18	Universal
19	Pro 793
20	Pro 822
21	Pro 083-7402
22	PS08101022
23	PS07100925
24	PS08101004



3 Replications, Alpha-Lattice Design

<http://variety.wsu.edu>

Planting Date: 2-May



2013 Lentil Variety Trial, Farmington

6	Crimson	LC08600113P	LC0860B123L	Merrit	LC01602062T	Morena	LC0860B130L	Pardina
5	Richlea	LC06601734L	Eston	LC07ND068E	LC07ND055E	Brewer	Avondale	LC01602273E
4	Richlea	Crimson	Avondale	Brewer	Merrit	Pardina	LC08600113P	LC06601734L
3	LC07ND068E	Morena	Eston	LC01602062T	LC07ND055E	LC01602273E	LC0860B130L	LC0860B123L
2	LC01602273E	Richlea	Morena	Merrit	Pardina	LC07ND055E	LC07ND068E	LC06601734L
1	Avondale	LC0860B123L	LC0860B130L	Eston	LC01602062T	Crimson	LC08600113P	Brewer
	1	2	3	4	5	6	7	8

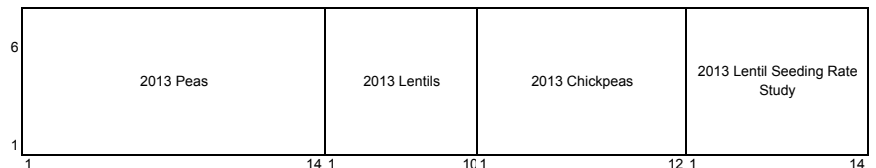
Entry	Name
1	LC01602273E
2	LC07ND068E
3	LC07ND055E
4	Eston
5	LC08600113P
6	Morena
7	Pardina
8	Avondale (LC01602300R)
9	Richlea
10	LC0860B123L
11	LC0860B130L
12	LC06601734L
13	Merrit
14	Brewer
15	LC01602062T
16	Crimson



3 Replications, Alpha-Lattice Design

<http://variety.wsu.edu>

Planting Date: 2-May



2013 Chickpea Variety Trial, Farmington

6	BGC090016	CDC Frontier	BGC08009M	Billy beans	Dwellely	Sierra	Evans	Myles	CDC Alma	CA0790B0034C
5	CA0490B0223D	CA04900843C	CA0890B0429C	BGC090023	CA0890B0526D	Sawyer	CDC Orion	CA0790B0054C	CA0790B0043C	BGC08010M
4	CA0790B0054C	CA0890B0526D	BGC08010M	BGC090016	CDC Alma	Billy beans	CA0490B0223D	CA0890B0429C	BGC08009M	Dwellely
3	CA0790B0043C	Myles	Sierra	BGC090023	Evans	CDC Orion	CA0790B0034C	CA04900843C	CDC Frontier	Sawyer
2	BGC090023	CA0790B0043C	CDC Alma	CDC Frontier	Sawyer	Billy beans	CA0790B0034C	CA0790B0054C	BGC090016	Dwellely
1	CDC Orion	CA0890B0429C	BGC08010M	BGC08009M	CA04900843C	CA0890B0526D	Myles	Sierra	CA0490B0223D	Evans
	1	2	3	4	5	6	7	8	9	10

Entry	Name
1	Dwellely
2	Evans
3	Sawyer
4	Sierra
5	Billy beans
6	CA0790B0043C
7	CA04900843C
8	CA0790B0034C
9	CA0790B0054C
10	CA0890B0429C
11	CDC Alma
12	CDC Orion
13	CDC Frontier
14	BGC08009M
15	BGC08010M
16	BGC090023
17	BGC090016
18	CA0490B0223D
19	CA0890B0526D
20	Myles



3 Replications, Alpha-Lattice Design

<http://variety.wsu.edu>

Planting Date: 2-May

6	2013 Peas	2013 Lentils	2013 Chickpeas	2013 Lentil Seeding Rate Study
1	1	14 1	10 1	12 1
	1	14	14	14